

# The Effect of Inoculum Concentration on the Growth Profile and Antibacterial Activity of Actinomycete (A6K) Isolates

*By Ika Maylani, Nanik Ningsih, Sulistyani*



# The Effect of Inoculum Concentration on the Growth Profile and Antibacterial Activity of Actinomycete (A6K) Isolates

Ika Maylani Ningsih and Nanik Sulistyani\*

Faculty of Pharmacy, Universitas Ahmad Dahlan, Yogyakarta, Indonesia

Actinomycetes are important microorganisms renowned for their ability to produce secondary metabolites as antibiotics. A6K Actinomycetes were isolated from papaya plant soil and yielded antibacterial metabolites. This research aims to identify the effect of inoculum concentration on the growth profile and antibacterial activity of A6K isolates as producers of antibiotics. The bacterial concentration within the inoculum (CFU/mL) was determined by a turbidity test using visible spectrophotometry on inoculum 10%, 20%, 30% v/v. The growth profile of A6K isolates was made with a correlation graph between incubation time and weight of biomass in the liquid cultures of A6K isolates, while the temporal profile of secondary metabolites was established with a graph correlating incubation time and growth inhibition zones of *S. aureus* and *E. coli*. Statistical analysis by repeated ANOVA was performed to verify the influence of inoculum concentration rate and incubation period on inhibition zone and biomass weight. According to the growth profile graph, the stationary phase occurred after the fourth day of incubation. Results revealed that inoculum concentration and incubation period gave a significant difference to the resulting inhibition zones. The higher the concentration of inoculum, the larger the bacterial content and the shorter the incubation time needed to obtain maximum antibacterial activity.

**Keywords:** Antibacterial, Actinomycetes, Inoculum Concentration, A6K Isolates.

## 1. INTRODUCTION

The occurrence of resistance due to inappropriate use of antibiotics is more frequent than the discovery of new antibiotics.<sup>1</sup> It is therefore necessary to seek antibiotics from unprecedented lines with higher potency. A novel antibacterial source under much investigation nowadays comes from Actinomycete bacteria, which produce 70% of antibiotic compounds.<sup>2,3</sup> Grass rhizospheres release exudates serving as life source for soil microflora including Actinomycetes, which is why Actinomycetes are often found in grass soil.<sup>4,5</sup>

Arifin<sup>6</sup> successfully isolated and purified Actinomycetes from the rhizosphere of *Carica papaya* L. of the family Caricaceae, resulting in 15 isolates. Eight of these isolates were proven to inhibit the development of *Escherichia coli* and *Staphylococcus aureus* bacteria. One of them, the A6K isolate, had the greatest inhibitive power, generating a radical inhibition zone of 20.75 mm on the *Escherichia coli* test bacteria and 24.75 mm on the *Staphylococcus aureus* test bacteria.<sup>6</sup>

However, the study in question has yet to disclose how the starter concentration affects the growth profile and antibacterial activity of the eight isolates' liquid cultures. Learning the effect of inoculum concentration in the aforementioned isolates on their

growth profile and antibacterial activity is essential in determining the suitable time to harvest secondary metabolites, thus simplifying the estimation of the bacteria's incubation period. For this purpose, the isolate tested was the one with the strongest inhibitive power, the A6K isolate.

Actinomycetes grow into mold-like thin filaments to the extent that Actinomycetes are regarded as fungi. On an agar plate, Actinomycetes can be easily distinguished from aerial hyphae and substrate mycelia bacteria.<sup>7</sup> This study was conducted to identify the effect of inoculum concentration on growth profile and antibacterial activity against *Escherichia coli* and *Staphylococcus aureus*. The concentration rate of inoculum impacts on the incubation period length and resulting inhibition zone. The higher the inoculum concentration, the larger the inhibition zone it creates.<sup>8,9</sup>

This research is useful in obtaining the optimal harvest time for antibacterial secondary metabolites in identified inoculum concentration, and thus can be used as basis for future research.

## 2. EXPERIMENTAL DETAILS

### 2.1. Material

The sample utilized in this study was A6K isolated from papaya (*Carica papaya*) plant soil.<sup>6</sup>

9

\*Author to whom correspondence should be addressed.

2

## 2.2. Actinomycete Isolate Preparation

As much as 2 mL active A6K isolate in this research was recultured onto a 20 mL SNB medium, then incubated at room temperature with a stirrer for five days and subjected to streaking (1 ose) in an SNA medium containing 50 µg/mL cycloheximide.<sup>6</sup> The isolate was subsequently incubated for seven days at room temperature before the growth uniformity of the Actinomycete colony was examined.<sup>10</sup> The isolate is considered pure if the isolate grows uniformly in line with the morphological traits of an Actinomycete colony.<sup>5,7</sup>

## 2.3. Characteristics of the A6K Actinomycete Isolate

### 2.3.1. Morphology

Morphological testing with observation employed a slide culture method, where the colony from the starter culture was streaked on an SNA medium and a glass cover slip was put on the medium, before being incubated at 28 °C for a week. Observation on the structure, color and form of the spore used a microscope with 400× magnification.<sup>2</sup>

### 2.3.2. Carbon Source Utilization Test

An A6K Actinomycete stock culture was streaked on an ISP9 medium, then incubated at room temperature for 10–14 days.<sup>2,11</sup>

## 2.4. Starter Culture Preparation

Five most fertile A6K isolate plugs were inserted into a 250 mL SNB medium that had been sterilized beforehand.<sup>12</sup> The culture was thus incubated at room temperature for five days while using a stirrer.

## 2.5. Solution Turbidity Testing on Varied Inoculum Concentrations

This was realized by making a series of McFarland standard concentrations (CFU/mL) with standard curves of a mixture of 1% BaCl<sub>2</sub> and 1% H<sub>2</sub>SO<sub>4</sub> as in Table I.<sup>13</sup>

Absorbance of the McFarland standard solution series was read on a visible spectrophotometer at lambda 600 nm to make standard curves of bacteria concentration (CFU/mL) versus absorbance.<sup>13</sup> Afterwards, the absorbance of each liquid culture (10, 20, 30% v/v) was read with the same lambda at the first, second, third, fourth and fifth minutes by means of SNB blanks.

Table I. McFarland standard concentrations and composition of their components.

McFarland standard	(×10 <sup>6</sup> ) CFU/mL	Composition	
		1% BaCl <sub>2</sub> (mL)	1% H <sub>2</sub> SO <sub>4</sub> (mL)
0.5	<300	0.05	9.95
1	300	0.1	9.9
2	600	0.2	9.8
3	900	0.3	9.7
4	1200	0.4	9.6
5	1500	0.5	9.5
6	1800	0.6	9.4
7	2100	0.7	9.3
8	2400	0.8	9.2
9	2700	0.9	9.1
10	3000	1.0	9.0

## 2.6. A6K Isolate Fermentation

Stock solutions of 10 mL, 20 mL, and 30 mL respectively were transferred to different new Erlenmeyer flasks containing 100 mL of new sterilized SNB with three times replication of each concentration. All test cultures were then shaken at 200 rpm and incubated at room temperature for 14 days. During incubation, everyday 1.5 mL cultures are retrieved and placed in Eppendorf tubes before they were labelled and stored in a freezer.<sup>14</sup>

## 2.7. A6K Isolate Supernatant Preparation

After 14 days, the test cultures were taken out of the freezer and thawed. Once thawed the cultures were centrifuged at 8000 rpm for 10 minutes to separate supernatants from sediments. The obtained supernatants were put into new Eppendorf tubes, designated as test liquid cultures, while the remaining sediments were dried in an oven at 50 °C until reaching constant weight.<sup>15</sup>

## 2.8. Test Bacteria Preparation

### 2.8.1. Production of Test Bacteria Stock

The test bacteria used in this research were *Staphylococcus aureus* and *Escherichia coli*, prepared by taking 1 ose from each of the utilized pure breed bacteria stocks and placing them into 1 mL BHI, incubated at 37 °C for 18–24 hours. After the bacteria grew, they were stored at 4 °C as bacteria stock.<sup>16,17</sup>

### 2.8.2. Production of Test Bacterial Suspension

One ose from the bacteria stock was suspended in a tube and received 1 mL BHI before being incubated for 18–24 hours at 37 °C. 100 µL was collected from the incubation, immersed in 1 mL BHI and incubated further for 3–5 hours at 37 °C. Afterwards, 100 µL was retrieved and added with NaCl 0.9% until its turbidity matched the McFarland standard (10<sup>8</sup> CFU/mL).<sup>16</sup>

## 2.9. Test of the Activity of A6K Actinomycete Isolate Liquid Culture Against Test Bacteria

The test bacteria for the A6K isolate liquid culture activity test were *Escherichia coli* and *Staphylococcus aureus*, while the applied medium was a Mueller Hinton (MH) medium. A Petri dish with the MH medium was smeared with the test bacterial suspension using a sterile cotton swab by dipping it into the suspension and squeezing it against the tube wall, then smearing the suspension evenly on the MH agar medium surface and leaving it for ±30 minutes until it is absorbed. Every 20 µL test liquid culture from the A6K isolate was dropped onto a paper disc 6 mm in diameter according to day order (1–14) and incubated for 18–24 hours at 37 °C.<sup>2</sup>

After 24 hours, observation was conducted on the antibacterial activity of the A6K isolate test liquid culture, which is marked by a clear zone around the paper disc. Next, the inhibition diameter was estimated by measuring the diameter of the clear zone around the paper disc from four sides of the inhibition zone circle and calculating the average diameter.<sup>18</sup> The acquired data were then presented in a graph between incubation period (day) and inhibition zone diameter (mm).<sup>16</sup> Statistical analysis was also run to find out whether there was a significant difference in the effect of inoculum concentration on the inhibition zone.



## 2.10. Test of the Effect of Inoculum Concentration on the Growth Profile of the A6K Actinomycete Isolate

The growth profile of the A6K isolates from day one to 14 was obtained by examining the weight of sediments resulting from incubation day 1–14. Each sediment separated from its supernatant in an oven at 50 °C was weighed. Dry sediments were weighed until achieving constant weight and a graph between incubation time (day) and biomass (mg) was made. In addition, statistical analysis was performed to identify any meaningful difference in the impact of inoculum concentration on the growth of the A6K isolates.

## 3. RESULTS AND DISCUSSION

When planted in an SNA medium, the A6K isolate (Fig. 1) showed characteristics of a slow-developing colony, in that it took two days before starting to grow. Following the fourth day, the colony's yellow pigments appeared, adhered strongly to the agar, and was damp (not dry). The colony grew slowly and had a uniform color, indicating no growth of fungi or other bacteria. The colony developing in the SNA medium underwent microscopic examination by being Gram stained beforehand.<sup>19</sup> The microscopic test outcome revealed that the colony growing in the SNA medium was that of the A6K Actinomycete isolate. This finding was similar to microscopic test results in prior research,<sup>6</sup> was purple in color (Gram-positive bacteria), and assumed the shape of branched filaments or had mycelia.

Once microscopic test results confirmed that the cultured bacteria were indeed A6K Actinomycetes, the next step was to create a starter culture in an SNB medium and a carbon test in Nitrate Agar medium by ISP9 procedure.<sup>2</sup> The application of carbon sources was meant to determine in which carbon source the Actinomycete bacteria could develop fast and productively. This carbon source test undertook a procedure akin to that of ISP9.<sup>2,11</sup> This study employed carbon sources from sucrose, glucose, mannitol, fructose and rhamnose, and used SNA as positive control as delineated in Table II.

The outcomes of carbon source usage showed that the fastest growth in comparison with the positive control was in Nitrate Agar medium with glucose monohydrate on the second day, while the slowest was in Nitrate Agar medium with mannitol where the development only intensified on the fourth day, aside from being less prolific than the negative control.

Subsequently, the obtained starter cultures were each inoculated in 100 mL SNB in a 250 mL Erlenmeyer flask by varying the concentrations at 10, 20, 30% v/v with threefold replication of

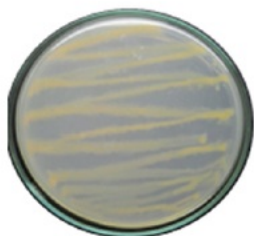


Fig. 1. A6K Actinomycete isolate in SNA medium.

Table II. A6K Actinomycete isolate growth in certain carbon sources.

Day	Growth						
	Negative control	Positive control	Mannitol	Sucrose	Lactose	Rhamnose	Glucose
0	–	–	–	–	–	–	–
1	+	+	+	+	+	+	+
2	+	+	+	+	+	+	++
3	+	+++	+	++	++	++	+++
4	+	+++	++	+++	++	+++	+++
5	++	+++	++	+++	++	+++	+++
6	++	+++	++	+++	++	+++	+++
7	++	+++	++	+++	++	+++	+++

each concentration before undergoing the turbidity test.<sup>14</sup> The linear regressive equation between McFarland standard concentration and absorbance gained in this study was  $y = 0.00052x + 0.06053$  with  $R = 0.99607$ .

The bacteria concentration prior to incubation calculated through that equation was 300.264 CFU/mL in inoculum 10% v/v, 1,608.596 CFU/mL in inoculum 20% v/v, and 1,699.622 CFU/mL in inoculum 30% v/v, whereas inoculum 100% v/v contained 1,906.673 CFU/mL of bacteria. This finding implies that the larger the percentage of inoculum tested, the greater its bacterial content. Following 14 days of incubation, the growth curve of each inoculum concentration was yielded as displayed in Figure 2.

The bacteria growth curve can be established by determining its dry weight, which is one of the best methods of calculation for Actinomycetes.<sup>18</sup> Actinomycete growth can be examined by measuring the biomass weight of the tested liquid culture and then depicting it in a curve correlating incubation period (day) to log biomass (mg) to identify the growth profile of the A6K Actinomycete isolate starter.

It can be seen from Figure 2 that at inoculum concentrations of 20% v/v and 30% v/v the exponential phase peaked or attained optimal bacteria growth on the fourth day and thereafter declined, denoting the onset of the stationary phase or even death. At inoculum concentration of 10% v/v the exponential phase peaked on the third day and then also entered the stationary phase until day 6. When the bacteria come into

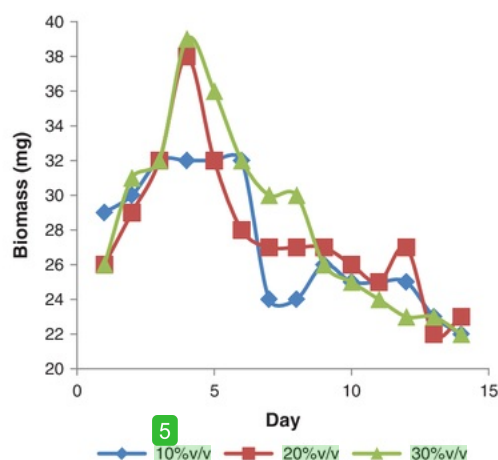


Fig. 2. A6K isolate growth curve.

Table III. A6K antibacterial activity against *Escherichia coli*.

Days	Inhibition zone diameter (mm)		
	10% v/v	20% v/v	30% v/v
6	3.55 ± 0.10	6.56 ± 1.10	10.03 ± 0.14
7	5.16 ± 0.88	6.34 ± 0.08	10.66 ± 0.43
8	6.64 ± 0.37	3.49 ± 0.03	6.50 ± 1.84
9	2.57 ± 0.27	—	3.21 ± 0.03
10	1.22 ± 0.01	—	—

the stationary phase after passing the exponential peak, they begin producing secondary metabolites. The stationary phase is prompted by depleting nutrients, pH change, and the same number of dead and new cells so that the bacteria compete to survive by excreting self-protective substances (secondary metabolites), among which are antibacterial.<sup>19</sup>

The resemblance in growth profile in inoculum 20% v/v and 30% v/v was probably caused by similar bacterial content prior to incubation. The 10% v/v concentration generated a stationary phase which lasted for four days (days 3–7). This suggests that an inoculum concentration of 10% v/v is better for harvesting during the stationary phase to gain antibiotics than 20% v/v and 30% v/v because both reached the death phase sooner. However, statistical assessment on data from day 1 to 14 generally showed no significant difference in growth profile among the three inoculum concentrations.

The supernatants of the A6K isolate liquid cultures from day 1 until 14 were then tested for antibacterial activity against *Staphylococcus aureus* and *Escherichia coli*. Results of the antibacterial activity test are summarized in Table III (*E. coli*) and Table IV (*S. aureus*). In the testing on *E. coli*, antibacterial activity was initially detected on the sixth day with the shortest inhibition zone diameter at inoculum 10% v/v (3.55 mm), followed by that at 20% v/v (6.56 mm) and the longest at inoculum 30% v/v (10.03 mm). This signifies that on day 6 most active metabolites were procured in inoculum 30%. A similar occurrence transpired in the test on *S. Aureus*, which disclosed that on the sixth day antibacterial activity only began to manifest in inoculum 30% v/v, whilst the other inoculum concentrations have yet to reveal such activity. It can therefore be concluded that the greater the inoculum concentration, the faster active antibacterial metabolites are engendered.

According to outcomes of the test on *E. coli*, optimal antibacterial activity was provided on day 8 (in inoculum 10% v/v), day 6 or day 7 (in inoculum 20% v/v and 30% v/v respectively). Maximum inhibition zone diameter was yielded by inoculum 30% v/v. Meanwhile, in results of the test on *S. aureus*, optimal antibacterial activity was produced on the ninth day (in inoculum 10% v/v), eighth day (in inoculum 20% v/v) and seventh day (in inoculum 30% v/v). Maximum inhibition zone diameter was resulted by inoculum 10% v/v. Maximum activity generated by the three concentrations against the test bacteria was first achieved by inoculum 30% v/v, followed by 20% v/v and lastly 10% v/v. This indicates that the higher the concentration, the faster maximum antibacterial activity is attained. Meanwhile, the optimal incubation time of each inoculum concentration in the tests on *E. coli* and *S. aureus* were virtually the same, raising the assumption that the metabolites which actively subjugated *E. coli* and *S. aureus* were identical.

Table IV. A6K antibacterial activity against *Staphylococcus aureus*.

Day	Inhibition zone diameter (mm)		
	10% v/v	20% v/v	30% v/v
7	—	—	4.03 ± 0.18
8	3.90 ± 0.04	4.10 ± 0.81	9.80 ± 0.24
9	6.18 ± 1.31	9.63 ± 0.21	—
10	10.77 ± 0.52	—	—
10	1.22 ± 0.01	—	—

Overall, statistical test results showed a significant difference stemming from the influence of inoculum concentration and incubation time on the yielded inhibition zone against *E. coli*. Likewise, statistical analysis also revealed a meaningful difference resulting from the effect of inoculum concentration and incubation time on the inhibition zone generated around *S. aureus*.

## 4. CONCLUSIONS

The growth profile indicated that the stationary phase commenced after the fourth day, but statistical analysis results suggested no impact of inoculum concentration on the biomass weight produced, since there was no significant difference either based on variation in concentration or incubation period length.

Nevertheless, inoculum concentration rate does affect the antibacterial activity profile of the A6K Actinomycete isolate. The higher the inoculum concentration, the larger the bacterial content and the shorter the incubation time required to obtain optimal inhibition zone.

Incubation time does not exert any effect on biomass weight but does impact on the inhibition zone created by the A6K Actinomycete isolate.

## References and Notes

1. R. Bisth, A. Katiyar, R. Singh, and P. Mittal, *Asian J. Pharm. Clin. Res.* 2, 2 (2009).
2. H. Rante, Wahyono., Y. B. Murti, and G. Alam, *Indonesian J. Pharm.* 21, 3 (2010).
3. S. J. Kumar, P. Santhanam, and M. M. Selvam, *Int. J. Pharma. Bio. Sci.* 2, 1 (2011).
4. S. A. Waksman, *The Actinomycetes* (1950).
5. M. Good Fellow, S. T. William, and M. Moordarski, *Actinomycetes in Biotechnology* 188, 327 (1988).
6. M. Arifin, Thesis (2015).
7. S. Qin, J. Li, H. H. Chen, G. Z. Zhao, W. Y. Zhu, C. L. Jiang, L. H. Xu, and W. J. Li, *Appl. Environ. Microbiol.* 75 (2009).
8. S. Febina, R. D. Rachel, and R. Shenbagaratai, *Int. J. Pharm. Pharm. Sci.* 2, 6 (2014).
9. M. A. Houssam, A. S. El-Sayed, H. Mona, and M. El-Gazar, *World Rural Observations* 3, 3 (2011).
10. Y. Jiang, Q. Li, X. Chen, and C. Jiang, *Isolation and Cultivation Methods of Actinobacteria* 42 (2016).
11. E. B. Shirling and D. Gottlieb, *Intr. J. Syst. Bact.* 13 (1996).
12. X. Wang, L. Huang, Z. Kang, H. Buchenauer, and X. Gao, *J. Biomedicine Biotechnol.* 10 (2010).
13. S. Sutton, *J. Validation Technol.* (2011).
14. N. Gaurav, S. Shukla, R. Mall, and K. Mishra, *Eur. J. Biomedical and Pharm. Sci.* 2, 4 (2015).
15. M. Oskay, *Int. J. Agric. Biol.* 13, 3 (2011).
16. N. Sulistiyani and Mulyadi, *J. Public Health* 7, 2 (2013).
17. M. Oskay, A. U. Tamer, and C. C. Azeri, *Afr. J. Biotechnol.* 3, 9 (2004).
18. V. Parkavi, M. Vignesh, K. Selvakumar, J. M. Mohamed, and J. J. Roby, *Int. J. Pharm. Sci. Drug Res.* 4, 3 (2012).
19. G. Sumbali and R. S. Mehrotra, *Principles Microbiol.* 94 (2009, 2010).

Received: 16 July 2017. Accepted: 18 September 2017.

# The Effect of Inoculum Concentration on the Growth Profile and Antibacterial Activity of Actinomycete (A6K) Isolates

ORIGINALITY REPORT

7%

SIMILARITY INDEX

## PRIMARY SOURCES

1	<a href="http://repository.ubaya.ac.id">repository.ubaya.ac.id</a> Internet	61 words — 2%
2	<a href="http://eprints.upnjatim.ac.id">eprints.upnjatim.ac.id</a> Internet	56 words — 2%
3	<a href="http://uschinatradewar.com">uschinatradewar.com</a> Internet	34 words — 1%
4	H.-O. Kim, S.-W. Park, H.-D. Park. "Inactivation of Escherichia coli O157:H7 by cinnamic aldehyde purified from Cinnamomum cassia shoot", Food Microbiology, 2004 Crossref	11 words — < 1%
5	<a href="http://www.irandoc.ac.ir">www.irandoc.ac.ir</a> Internet	10 words — < 1%
6	Lee, S.H.. "Effects of some Chinese medicinal plant extracts on five different fungi", Food Control, 200712 Crossref	9 words — < 1%
7	Kailin Han, Xiao Liu, Shanshan Qin, Yuan Wang, Hua Sun, Peng Yu. "Design, synthesis and biological activity evaluation of novel antibacterial agent (E)-1-(4-chlorobenzyl)-5-styrylindoline-2, 3-dione", Proceedings 2011 International Conference on Human Health and Biomedical Engineering, 2011 Crossref	8 words — < 1%



---

8 Frederick A. Sirgel. "Measuring Minimum Inhibitory Concentrations in Mycobacteria", Methods in Molecular Biology, 2009 8 words — < 1%  
Crossref

---

9 [www.researchgate.net](http://www.researchgate.net) 8 words — < 1%  
Internet

---

10 D.S. Solanki, S. Kumar, K. Parihar, A. Tak, P. Gehlot, R. Pathak, S.K. Singh. "Characterization of a novel seed protein of Prosopis cineraria showing antifungal activity", International Journal of Biological Macromolecules, 2018 7 words — < 1%  
Crossref

---

11 Jing-quan Yang, Li-mei Hao, Shuang Wang, Li-li Hou, Jin-hui Wu. "Preparation of a Novel Bio-Antibacterial PET Nonwoven Fabrics and Antibacterial Activity Evaluation", 2010 4th International Conference on Bioinformatics and Biomedical Engineering, 2010 6 words — < 1%  
Crossref

---

EXCLUDE QUOTES OFF  
EXCLUDE BIBLIOGRAPHY ON

EXCLUDE MATCHES OFF