

ISBN: 978-1-5386-0658-2



Conference Number #41709

ICITISEE 2017

*The 2nd International Conference
on Information Technology,
Information Systems and Electrical Engineering
(ICITISEE-2017)*

*Opportunities and
Challenges on
Big Data
Future Innovation*

1-2 November 2017 | Yogyakarta, Indonesia

Steering Committee

Berilana Berilana (STMIK Amikom Purwokerto, Indonesia)
I Wayan Mustika (Universitas Gadjah Mada, Indonesia)
Hanung Adi Nugroho (Universitas Gadjah Mada, Indonesia)
Muhamad Purwanto (STMIK AMIKOM Yogyakarta, Indonesia)
Suharyanto Suharyanto (Gadjah Mada University, Indonesia)
Mohammad Suyanto (Universitas AMIKOM Yogyakarta, Indonesia)

Organizing Committee

General Chair

Arief Setyanto (Universitas AMIKOM Yogyakarta, Indonesia)

Co-Chair

Ferry Wahyu Wibowo (Universitas AMIKOM Yogyakarta, Indonesia)

Secretary

Nila Puspitasari (Universitas AMIKOM Yogyakarta, Indonesia)

Treasurer

Sumarni Adi (University of Amikom Yogyakarta, Indonesia)

Member

Akhmad Dahlan (Universitas Amikom Yogyakarta, Indonesia)
Kusrini Kusrini (AMIKOM Yogyakarta University, Indonesia)
Emha Taufiq Luthfi (Universitas AMIKOM Yogyakarta, Indonesia)
Robert Marco (STMIK Amikom Yogyakarta, Indonesia)
Asro Nasiri (University of Amikom Yogyakarta, Indonesia)
Sudarmawan Sudarmawan (AMIKOM Yogyakarta University, Indonesia)

Technical Committee

IEEE Student Branch of Universitas Amikom Yogyakarta

Agung Agung (Universitas AMIKOM Yogyakarta, Indonesia)
Abinda Dwi Nur Ahmad (Universitas AMIKOM Yogyakarta, Indonesia)
Yuliana Astuti (University Amikom Yogyakarta, Indonesia)
Farendy Naufal Asyikin (Universitas AMIKOM Yogyakarta, Indonesia)
Erin Citra (Universitas Amikom Yogyakarta, Indonesia)
Frista Desy Damayanti (Universitas Amikom Yogyakarta, Indonesia)

Ridho Darmawan (Universitas AMIKOM Yogyakarta, Indonesia)
Siti Fatonah (Universitas AMIKOM Yogyakarta, Indonesia)
Waode Hasanah (Universitas AMIKOM Yogyakarta, Indonesia)
Izharuddin Malik Ibrahim (Universitas AMIKOM Yogyakarta, Indonesia)
Anindya Wahyu Larasati (Amikom University Yogyakarta, Indonesia)
Dewi Mustikasari (Universitas AMIKOM Yogyakarta, Indonesia)
Budi Octaviandy (Universitas AMIKOM Yogyakarta, Indonesia)
M. Agung Prasetyo (Universitas AMIKOM Yogyakarta, Indonesia)
Dhian Prihanto (Universitas AMIKOM Yogyakarta, Indonesia)
Yugana Firda Syu'ari (Universitas AMIKOM Yogyakarta, Indonesia)
Yanti Yanti (Universitas AMIKOM Yogyakarta, Indonesia)

Technical Program Committee

Intan Ermahani A. Jalil	Universiti Teknikal Malaysia	Malaysia
Marzanah Abdul Jabar	Universiti Putra Malaysia	Malaysia
Radwan Abujassar	Arab Open University	Kuwait
Sumarni Adi	University of Amikom Yogyakarta	Indonesia
David Agustriawan	Asia University	Taiwan
Shaik Ahamad	KSA	Saudi Arabia
Abinda Dwi Nur Ahmad	Universitas AMIKOM Yogyakarta	Indonesia
Ibrahim Ahmad	Universiti Teknikal Malaysia Melaka	Malaysia
Mohd Khairul Ikhwan Ahmad	Universiti Tun Hussein Onn Malaysia	Malaysia
Ali Qusay Al-Faris	University of the People	USA
Mahamad Alfakih	KTH Royal Institute of Technology	Sweden
Shajith Ali	SSN College of Engineering, Chennai	India
Abdualah Aljankawey	University of New Brunswick	Canada
Belal Alshaqqaqi	University of Science and Technology of Oran	Algeria
J Amudhavel	K L University	Indonesia
Andria Arisal	Indonesian Institute of Sciences	Indonesia
Arti Arya	PESIT-Bangalore South Campus	India
Ahmad Ashari	Gadjah Mada University	Indonesia
Yuliana Astuti	University Amikom Yogyakarta	Indonesia
Farendy Naufal Asyikin	Universitas AMIKOM Yogyakarta	Indonesia
Suryanti Awang	Universiti Malaysia Pahang	Malaysia
Annappa B	National Institute of Technology Karnataka Surathkal	India
Aslina Baharum	Universiti Malaysia Sabah	Malaysia
Xiaodong Bai	NJUPT	P.R. China
Vinayak Bairagi	University of Pune	India
Maria Chiara Caschera	CNR	Italy
Selem Charfi	HD Technology	France
Parag Chatterjee	National Technological University, Buenos Aires	Argentina
Uei-Ren Chen	Hsiuping University of Science and Technology	Taiwan
Erin Citra	Universitas Amikom Yogyakarta	Indonesia
Akhmad Dahlan	Universitas Amikom Yogyakarta	Indonesia
Frista Damayanti	Universitas Amikom Yogyakarta	Indonesia
Ridho Darmawan	Universitas AMIKOM Yogyakarta	Indonesia
Subbareddy Darukumalli	Pazmany Peter Catholic University	Hungary
Ahmed Douik	California Institute of Technology	USA
Rafal Drezewski	AGH University of Science and Technology	Poland
Yuhuan Du	Dropbox Inc.	USA
Seyed Ebrahim Esmaeili	American University of Kuwait	Kuwait
Noriko Etani	Kyoto University	Japan
Ahmad Fajar	Bina Nusantara University	Indonesia
Rodrigo Falcão	Technische Universität Kaiserslautern	Germany
Farqad Farhan	Koya University	Iraq
Siti Fatonah	Universitas AMIKOM Yogyakarta	Indonesia
Ridi Ferdiana	Universitas Gadjah Mada	Indonesia
Seng Hansun	Universitas Multimedia Nusantara	Indonesia
Agus Harjoko	Universitas Gadjah Mada	Indonesia
Sri Hartati	Gadjah Mada University	Indonesia
Waode Hasanah	Universitas AMIKOM Yogyakarta	Indonesia
Iswadi Hasyim Rosma	Universitas Riau	Indonesia
Su-Cheng Haw	MMU	Malaysia

Leonel Hernandez	ITSA University	Colombia
Roberto Carlos Herrera Lara	National Polytechnic School	Ecuador
Danial Hooshyar	Korea University	Korea
Izharuddin Malik Ibrahim	Universitas AMIKOM Yogyakarta	Indonesia
Ramkumar Jaganathan	VLB Janakiammal College of Arts and Science	India
Arihant Jain	Jaipur Engineering College & Research Centre	India
Muhammad Herman Jamaluddin	Universiti Teknikal Malaysia Melaka	Malaysia
Dimitrios Kallergis	University of Piraeus	Greece
Mohammad Khalily Dermany	Islamic Azad University, Khomein Branch	Iran
Muhammad Imran Khan	University of Toulouse	France
Benahmed Khelifa	Tahri Mohammed University Bechar	Algeria
Ren-Song Ko	National Chung Cheng University	Taiwan
Fukuro Koshiji	Tokyo Polytechnic University	Japan
Anubhav Kumar	Sri Sai College of Engineering & Technology	India
Gulshan Kumar	Lovely Professional University	India
Kurnianingsih Kurnianingsih	Universitas Gadjah Mada	Indonesia
Edi Kurniawan	Indonesian Institute of Sciences	Indonesia
Kusrini Kusrini	AMIKOM Yogyakarta University	Indonesia
Tubagus Maulana Kusuma	Gunadarma University	Indonesia
Sri Kusumadewi	Indonesia Islamic University	Indonesia
Anindya Wahyu Larasati	Amikom University Yogyakarta	Indonesia
Armin Lawi	Hasanuddin University	Indonesia
Catherine Manuela Lee-Ramos	Ateneo de Manila University	Philippines
Wen Chek Leong	University of Malaya	Malaysia
Kezhi Li	Imperial College London	United Kingdom (Great Britain)
Nanfang Li	Embrane, Inc.	USA
Yiming Li	National Chiao Tung University	Taiwan
Hans-Dieter Liess	Universität der Bundeswehr München	Germany
Kangqi Liu	Shanghai Jiao Tong University	P.R. China
Ziping Liu	Southeast Missouri State University	USA
Dominik Luczak	Poznan University of Technology	Poland
Ahmad Luthfi	Universitas Islam Indonesia	Indonesia
Emha Taufiq Luthfi	Universitas AMIKOM Yogyakarta	Indonesia
Mahdin Mahboob	Stony Brook University	USA
Amit Manocha	Maharaja Ranjit Punjab Technical University	India
Prita Dewi Mariyam	Universitas Indonesia	Indonesia
Nurul Amziah Md Yunus	Universiti Putra Malaysia	Malaysia
Kamaludin Mohamad Yusof	Universiti Teknologi Malaysia	Malaysia
Seyed Sahand Mohammadi Ziabari	Malek Ashtar University of Technology	Iran
Othman Mohd	Universiti Teknikal Malaysia Melaka	Malaysia
Nor Liyana Mohd Shuib	University of Malaya	Malaysia
Ayan Mondal	Indian Institute of Technology, Kharagpur	India
Muhammed Bashir Mu'azu	Ahmadu Bello University, Zaria	Nigeria
Amrit Mukherjee	School of Electronic Engineering	India
Aina Musdholifah	Universitas Gadjah Mada	Indonesia
Dewi Mustikasari	Universitas AMIKOM Yogyakarta	Indonesia
Syibrah Naim	Universiti Sains Malaysia	Malaysia
Erika Nazaruka	Riga Technical University	Latvia
Shah Nazir	University of Peshawar	Pakistan

Ponrudee Netisopakul	King Mongkut's Institute of Technology Ladkrabang	Thailand
Hea Choon Ngo	Universiti Teknikal Malaysia Melaka	Malaysia
Felix Ngobigha	University of Essex	United Kingdom (Great Britain)
Thomas Nitsche	Hochschule Niederrhein	Germany
Zarina Mohd Noh	Universiti Putra Malaysia	Malaysia
Hanung Nugroho	Universitas Gadjah Mada	Indonesia
Prpto Nugroho	Universitas Gadjah Mada	Indonesia
Budi Octaviandy	Universitas AMIKOM Yogyakarta	Indonesia
Nitish Ojha	Chandigarh University, Mohali, Punjab	India
Saeed Olyae	Shahid Rajae Teacher Training University	Iran
Ilker Ali Ozkan	Selcuk University	Turkey
Shahril Parumo	Universiti Teknikal Malaysia Melaka	Indonesia
Charalampos Pitas	National Technical University of Athens	Greece
Kiran Sree Pokkuluri	Shri Vishnu Engineering College for Women	India
N. Prabaharan	Madanapalle Institute of Technology and Science	India
Esa Prakasa	Indonesian Institute of Sciences	Indonesia
Gede Pramudya Ananta	Universiti Teknikal Malaysia Melaka	Malaysia
M. Agung Prasetyo	Universitas AMIKOM Yogyakarta	Indonesia
Agus Pratondo	NUS	Singapore
Prihandoko Prihandoko	Gunadarma University	Indonesia
Tri Priyambodo	Universitas Gadjah Mada	Indonesia
Reza Pulungan	Universitas Gadjah Mada	Indonesia
Nila Puspitasari	Universitas AMIKOM Yogyakarta	Indonesia
Junfei Qiu	College of Communications Engineering	P.R. China
Ali Rafiei	University of Technology Sydney	Australia
Sujan Rajbhandari	Coventry University	United Kingdom (Great Britain)
Mritha Ramalingam	University Malaysia Pahang	Malaysia
Rasim Rasim	Indonesia University of Education	Indonesia
Farshad Rassaei	National University of Singapore	Singapore
Anhar Risnumawan	Politeknik Elektronika Negeri Surabaya	Indonesia
Samrat Sabat	University of Hyderabad	India
Sandeep Saini	The LNM Institute of Information Technology, Jaipur	India
G. p. Sajeev	Amrita Vishwa Vidyapeetham	India
Harry Santoso	Universitas Indonesia	Indonesia
Azilah Saparon	Universiti Teknologi MARA	Malaysia
Syantam Sarkar	Vijaya Vittala Institute of Technology	India
Mithileysh Sathiyarayanan	City, University of London	United Kingdom (Great Britain)
Vaibhav Saundarmal	Marathwada Institute of Technology, Aurangabad	India
Amel Serrat	USTO MB	Algeria
Wawan Setiawan	Universitas Pendidikan Indonesia	Indonesia
Arief Setyanto	Universitas AMIKOM Yogyakarta	Indonesia
Andik Setyono	Multimedia University Malaysia	Malaysia
Sfenrianto Sfenrianto	Binus University	Indonesia
Suhail Shahab	University Malaysia Pahang	Malaysia
Aditi Sharma	MBM Engineering College Jodhpur	India
Vesh Raj Sharma Banjade	Intel Corporation	USA
Abdul Samad Shibghatullah	Universiti Teknikal Malaysia Melaka	Malaysia
Mahendra Shukla	IIIT Allahabad	India
Shishir Shukla	Amity University	India
Monika Sikri	Cisco Systems India Pvt Ltd.	India

Supreet Singh	Thapar University	India
Tripty Singh	Amrita Vishwa Vidyapeetham	India
China Sonagiri	MRIET JNTUH Hyderabad	India
Yi-Jen Su	Shu-Te University	Taiwan
Joey Suba	University of the Assumption	Philippines
Parman Sukarno	Telkom University	Indonesia
Junaida Sulaiman	Universiti Malaysia Pahang	Malaysia
Retno Supriyanti	Jenderal Soedirman University	Indonesia
Fajar Suryawan	Universitas Muhammadiyah Surakarta	Indonesia
Iping Suwardi	Bandung Institute of Technology	Indonesia
Sharifah Sakinah Syed Ahmad	Universiti Teknikal Malaysia Melaka	Malaysia
Yugana Firda Syu'ari	Universitas AMIKOM Yogyakarta	Indonesia
Sushil Thale	Fr. C. Rodrigues Institute of Technology	India
Leonardo Tomassetti Ferreira Neto	University of Sao Paulo	Brazil
Dario Vieira	EFREI	France
Siye Wang	Institute of Information Engineering, Chinese Academy of Sciences	P.R. China
Ratna Wardani	Yogyakarta State University	Indonesia
Daniel Watzenig	Graz University of Technology	Austria
Aji Wibawa	Universitas Negeri Malang	Indonesia
Adi Wibowo	Diponegoro University	Indonesia
Ferry Wahyu Wibowo	Universitas AMIKOM Yogyakarta	Indonesia
Oki Wicaksono	Universitas Gadjah Mada	Indonesia
Yanti Yanti	Universitas AMIKOM Yogyakarta	Indonesia
Warusia Yassin	Universiti Teknikal Malaysia Melaka	Malaysia
Thaweesak Yingthawornsuk	King Mongkut's University of Technology Thonburi	Thailand
Xiaosong Yu	Beijing University of Posts and Telecommunications	P.R. China
Chau Yuen	Singapore University of Technology and Design	Singapore
Go Yun Il	Heriot-Watt University Malaysia	Malaysia
Muhammad Yusuf	University of Trunojoyo, Madura	Indonesia
Sigit Yuwono	Telkom University	Indonesia
Muhammad Zarlis	Universitas Sumatera Utara	Indonesia
Kaiman Zeng	Arkansas Tech University	USA

Reviewers

Intan Ermahani A. Jalil	Universiti Teknikal Malaysia	Malaysia
Radwan Abujassar	Arab Open University	Kuwait
David Agustriawan	Asia University	Taiwan
Mohd Khairul Ikhwan Bin Ahmad	Universiti Tun Hussein Onn Malaysia	Malaysia
Ali Qusay Al-Faris	University of the People	USA
Shajith Ali	SSN College of Engineering, Chennai	India
Arti Arya	PESIT-Bangalore South Campus	India
Ahmad Ashari	Gadjah Mada University	Indonesia
Suryanti Awang	Universiti Malaysia Pahang	Malaysia
Aslina Baharum	Universiti Malaysia Sabah	Malaysia
Xiaodong Bai	NJUPT	P.R. China
Uei-Ren Chen	Hsiuping University of Science and Technology	Taiwan
Andi Dharmawan	Universitas Gadjah Mada	Indonesia
Ahmed Douik	California Institute of Technology	USA
Rafal Drezewski	AGH University of Science and Technology	Poland
Seyed Ebrahim Esmaeili	American University of Kuwait	Kuwait
Noriko Etani	Kyoto University	Japan
Ahmad Nurul Fajar	Bina Nusantara University	Indonesia
Rodrigo Falcão	Technische Universität Kaiserslautern	Germany
Ridi Ferdiana	Universitas Gadjah Mada	Indonesia
Rayner Gomes	Universidade Federal do Piaui	Brazil
Seng Hansun	Universitas Multimedia Nusantara	Indonesia
Sri Hartati	Gadjah Mada University	Indonesia
Su-Cheng Haw	MMU	Malaysia
Edwin A Hernandez	EGLA Communications	USA
Leonel Hernandez	ITSA University	Colombia
Roberto Carlos Herrera Lara	National Polytechnic School	Ecuador
Danial Hooshyar	Korea University	Korea
Ramkumar Jaganathan	VLB Janakiammal College of Arts and Science	India
Arihant Kumar Jain	Jaipur Engineering College & Research Centre	India
Dimitrios Kallergis	University of Piraeus	Greece
Ren-Song Ko	National Chung Cheng University	Taiwan
Fukuro Koshiji	Tokyo Polytechnic University	Japan
Gulshan Kumar	Lovely Professional University	India
Wen Chek Leong	University of Malaya	Malaysia
Kezhi Li	Imperial College London	United Kingdom (Great Britain)
Kangqi Liu	Shanghai Jiao Tong University	P.R. China
Dominik Luczak	Poznan University of Technology	Poland
Ahmad Luthfi	Universitas Islam Indonesia	Indonesia
Mahdin Mahboob	Stony Brook University	USA
Prita Dewi Mariyam	Universitas Indonesia	Indonesia
Nurul Amziah Md Yunus	Universiti Putra Malaysia	Malaysia
Kamaludin Mohamad Yusof	Universiti Teknologi Malaysia	Malaysia
Seyed Sahand Mohammadi Ziabari	Malek Ashtar University of Technology	Iran
Nor Liyana Mohd Shuib	University of Malaya	Malaysia
Ayan Mondal	Indian Institute of Technology, Kharagpur	India
Muhammed Bashir Mu'azu	Ahmadu Bello University, Zaria	Nigeria
Amrit Mukherjee	School of Electronic Engineering	India

Aina Musdholifah	Universitas Gadjah Mada	Indonesia
Syibrah Naim	Universiti Sains Malaysia	Malaysia
Erika Nazaruka	Riga Technical University	Latvia
Ponrudee Netisopakul	King Mongkut's Institute of Technology Ladkrabang	Thailand
Hea Choon Ngo	Universiti Teknikal Malaysia Melaka	Malaysia
Thomas Nitsche	Hochschule Niederrhein	Germany
Zarina Mohd Noh	Universiti Putra Malaysia	Malaysia
Hanung Adi Nugroho	Universitas Gadjah Mada	Indonesia
Prapto Nugroho	Universitas Gadjah Mada	Indonesia
Saeed Olyae	Shahid Rajae Teacher Training University	Iran
Ilker Ali Ozkan	Selcuk University	Turkey
Charalampos N. Pitas	National Technical University of Athens	Greece
Kiran Sree Pokkuluri	Shri Vishnu Engineering College for Women	India
N. Prabakaran	Madanapalle Institute of Technology and Science	India
Esa Prakasa	Indonesian Institute of Sciences	Indonesia
Prihandoko Prihandoko	Gunadarma University	Indonesia
Tri K Priyambodo	Universitas Gadjah Mada	Indonesia
Junfei Qiu	College of Communications Engineering	P.R. China
Ali Rafiei	University of Technology Sydney	Australia
Mritha Ramalingam	University Malaysia Pahang	Malaysia
Farshad Rassaei	National University of Singapore	Singapore
Sandeep Saini	The LNM Institute of Information Technology, Jaipur	India
Harry Budi Santoso	Universitas Indonesia	Indonesia
Sayantam Sarkar	Vijaya Vittala Institute of Technology	India
Mithileysh Sathiyarayanan	City, University of London	United Kingdom (Great Britain)
Anindita Septiarini	Univeristas Mulawarman	Indonesia
Suhail Shahab	University Malaysia Pahang	Malaysia
Aditi Sharma	MBM Engineering College Jodhpur	India
Abdul Samad Shibghatullah	Universiti Teknikal Malaysia Melaka	Malaysia
Shishir Shukla	Amity University	India
Monika Sikri	Cisco Systems India Pvt Ltd.	India
Supreet Singh	Thapar University	India
China Venkateswarlu Sonagiri	MRIET JNTUH Hyderabad	India
Yi-Jen Su	Shu-Te University	Taiwan
Joey Suba	University of the Assumption	Philippines
Iping Supriana Suwardi	Bandung Institute of Technology	Indonesia
Wiwin Suwarningsih	Indonesian Institute of Science	Indonesia
Sushil Thale	Fr. C. Rodrigues Institute of Technology	India
Siye Wang	Institute of Information Engineering, Chinese Academy of Sciences	P.R. China
Ratna Wardani	Yogyakarta State University	Indonesia
Aji P Wibawa	Universitas Negeri Malang	Indonesia
Adi Wibowo	Diponegoro University	Indonesia
Oki Wicaksono	Universitas Gadjah Mada	Indonesia
Warusia Mohamed Yassin	Universiti Teknikal Malaysia Melaka	Malaysia
Chau Yuen	Singapore University of Technology and Design	Singapore
Go Yun Il	Heriot-Watt University Malaysia	Malaysia
Ilham Zaeni	State University of Malang	Indonesia

Organized By

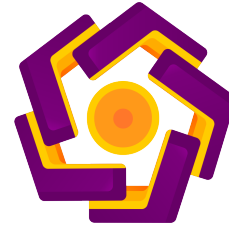
IEEE Student Branch of
Universitas Amikom Yogyakarta



IEEE Indonesia Section

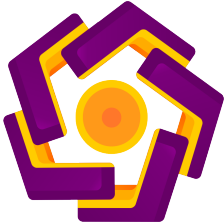


Universitas Amikom Yogyakarta



Supported By

Universitas AMIKOM Yogyakarta



STMIK AMIKOM Purwokerto



Universitas Gadjah Mada



2017 2nd International conferences on Information Technology, Information Systems and Electrical Engineering (ICITISEE)

PS 1-A

<i>Summarizing Indonesian Text Automatically by Using Sentence Scoring and Decision Tree</i> Periantu Marhendri Sabuna (Universitas Atma Jaya Yogyakarta, Indonesia), Djoko Budiyo Setyohadi (Universitas Atma Jaya Yogyakarta, Indonesia)	1
<i>New Model of e-Learning Based on Knowledge Management System</i> Nyoman Karna (School of Electrical Engineering, Telkom University, Indonesia)	7
<i>An Expanded Prefix Tree-based Mining Algorithm for Sequential Pattern Maintenance with Deletions</i> Van Hoang (Ton Duc Thang University, Vietnam), Vo Thi Ngoc Chau (HCMUT, Vietnam), Phung Nguyen (CSE/Ho Chi Minh City University of Technology, Vietnam)	11
<i>On Comparison of Deep Learning Architectures for Distant Speech Recognition</i> Rika Sustika (Research Center for Informatics - Indonesian Institute of Sciences (LIPI), Indonesia), Asri Yuliani (Indonesian Institute of Sciences (LIPI), Indonesia), Efendi Zaenudin (Research Center for Informatics, Indonesian Institute of Sciences (LIPI), Indonesia), Hilman F Pardede (Indonesian Institute of Sciences, Indonesia)	17
<i>Arabic Speech Recognition Using MFCC Feature Extraction and ANN Classification</i> Elvira Wahyuni (Universitas Islam Indonesia, Indonesia)	22
<i>Nonlinear Autoregressive Exogenous Model (NARX) in Stock Price Index's Prediction</i> Antoni Wibowo (Bina Nusantara University & Jakarta, Indonesia)	26
<i>Parallelized k-Means Clustering by Exploiting Instruction Level Parallelism at Low Occupancy</i> Dewi Ismi (Ahmad Dahlan University, Indonesia), Adhi Prahara (Universitas Ahmad Dahlan, Indonesia), Achmad Imam Kistijantoro (Bandung Institute of Technology, Indonesia), Masayu Leylia Khodra (Institut Teknologi Bandung, Indonesia)	30
<i>Weather Forecasting Using Knowledge Growing System (KGS)</i> Muhammad Nurwiseso Wibisono (Institut Teknologi Bandung, Indonesia), Adang Suwandi Ahmad (Bina Nusantara University, Indonesia)	35

PS 1-B

<i>The Use of Exponential Smoothing Method to Predict Missing Service E-Report</i> Ahmad Chusyairi (STIKOM PGRI Banyuwangi, Indonesia), Pelsri NS (STIKOM PGRI Banyuwangi, Indonesia), Bagio Mr (Police Resort Banyuwangi, Indonesia)	39
<i>Optimization the Parameter of Forecasting Algorithm by Using the Genetical Algorithm Toward the Information Systems of Geography for Predicting the Patient of Dengue Fever in District of Sragen, Indonesia</i> Ryan Kristianto (University of AMIKOM Yogyakarta & University of AMIKOM Yogyakarta, Indonesia), Emma Utami (STMIK AMIKOM Yogyakarta, Indonesia)	45

<i>Financial Analysis and TOPSIS Implementation for Selecting the Most Profitable Investment Proposal in Goat Farming</i>	
Clara Hetty Primasari (Universitas Atma Jaya Yogyakarta, Indonesia), Djoko Budiyanto Setyohadi (Universitas Atma Jaya Yogyakarta, Indonesia)	51
<i>Feasibility Study of Scripting Indonesian Traditional Dance Motion in XML Format</i>	
Andi Wahyu Rahardjo Emanuel (Universitas Kristen Maranatha, Indonesia), Andreas Widjaja (Universitas Kristen Maranatha, Indonesia)	57
<i>Significant of MBTI Personality Model on Decision Making in University Program Selection</i>	
Sarerusae nye Ismail (Asia Pacific University Of Technology And Innovation & University Malaysia Kuala Lumpur, Malaysia), Babak Bashari Rad (Asia Pacific University of Technology & Innovation (APU) & School of Computing and Technology, Malaysia)	62
<i>Improving Organizational Agility of Micro, Small, and Medium Enterprises Through Digital Marketing Strategy</i>	
Sandy Kosasi (STMIK Pontianak, Indonesia), Vedyanto Vedyanto (Tanjungpura University Pontianak, Indonesia), I Dewa Ayu Eka Yuliani (STMIK Pontianak, Indonesia)	68
<i>Deployment of Cloud Computing for Higher Education Using Google Apps</i>	
Endy Sjaiful Alim (Huazhong University of Science and Technology, P.R. China), Hai Jin (Huazhong University of Science and Technology, P.R. China)	73
<i>Inveo, A Management Information System for Emissions Inventory E-Administration in Indonesia</i>	
Ryan Yonata (Institut Teknologi Bandung, Indonesia), Ayu Purwarianti (Bandung Institute of Technology, Indonesia)	78

PS 1-C

<i>Performance Test of Low-Complexity Visible Light Communication System</i>	
Yakub Fahim Luckyarno (King Mongkut's Institute of Technology Ladkrabang, Thailand), Pornchanok Namonta (King Mongkut's Institute of Technology Ladkrabang, Thailand), Panarat Cherntanomwong (King Mongkut's Institute of Technology Ladkrabang, Thailand)	84
<i>Classification of Intrusion Detection System (IDS) Based on Computer Network</i>	
David Ahmad Effendy (AMIKOM Yogyakarta University, Indonesia), Kusri Kusri (AMIKOM Yogyakarta University, Indonesia), Sudarmawan Sudarmawan (AMIKOM Yogyakarta University, Indonesia)	90
<i>Design and Implementation Stegocrypto Based on ElGamal Elliptic Curve</i>	
Lita Sari (Bandung Institute of Technology, Indonesia)	95
<i>Implementation of Automatic I/Q Imbalance Correction for FMCW Radar System</i>	
Dayat Kurniawan (Research Center for Electronics and Telecommunications (PPET-LIPI), Indonesia), Chaeriah Bin Ali Wael (Indonesian Institute of Sciences, Indonesia), Tajul Miftahushudur (Indonesian Institute of Sciences, Indonesia), Octa Heriana (Indonesian Institute of Sciences, Indonesia)	100
<i>Lightweight and Compact Antenna Design for Navigation Radar Application</i>	
Folin Oktafiani (Indonesian Institute of Sciences (LIPI), Indonesia)	106
<i>Performance Comparison of Signal Processing Filters on Smooth Pursuit Eye Movements</i>	
Rahmat Aditya Warman (Gadjah Mada University, Indonesia), Sunu Wibirama (Universitas Gadjah Mada, Indonesia), Agus Bejo (Universitas Gadjah Mada, Indonesia)	111

3.0 GHz Low Noise Amplifier Using Degenerative Inductor Circuit Configuration Applicable for S-Band Radar System

Arief Budi Santiko (Indonesia Institute of Science LIPI, Indonesia), Yana Taryana (Indonesia Institute of Science LIPI, Indonesia), Yaya Sulaeman (Indonesia Institute of Science LIPI, Indonesia), Yuyu Wahyu (Indonesia Institute of Science LIPI, Indonesia) 116

PS 2-A

Pattern Recognition Using Backpropagation and Template Matching Algorithm

Hendrykus Letsoin (Universitas Atma Jaya Yogyakarta, Indonesia), Chaken C. Z. Slarmanat (Universitas Atma Jaya Yogyakarta, Indonesia), Antonio E. Mirino (Universitas Atma Jaya Yogyakarta, Indonesia), Suyoto Suyoto (Universitas Atma Jaya Yogyakarta, Indonesia) 122

Analysis and Design of Tourism Information System: A Study of Rote Ndao Indonesia

Veky Hanas (Universitas Atma Jaya Yogyakarta, Indonesia), Albertus Joko Santoso (Universitas Atma Jaya Yogyakarta, Indonesia), Suyoto Suyoto (Universitas Atma Jaya Yogyakarta, Indonesia) 126

On-Line Analytic Processing (OLAP) Modeling for Graduation Data Presentation

Arik Sofan Tohir (AMIKOM Yogyakarta University, Indonesia), Kusrini Kusrini (AMIKOM Yogyakarta University, Indonesia), Sudarmawan Sudarmawan (AMIKOM Yogyakarta University, Indonesia) 132

Accounting Information System for Nonprofit Organization Based on PSAK 45 Standards

Yohanes Priadi Wibisono (Universitas Atma Jaya Yogyakarta, Indonesia), Djoko Budiyanto Setyohadi (Universitas Atma Jaya Yogyakarta, Indonesia) 136

OPet's is Petshop Mobile Application to Meet All the Needs of Pets (Day-care, Shopping and Grooming)

Oleh Soleh (Perguruan Tinggi Raharja, Indonesia), Rivka Farizi (Perguruan Tinggi Raharja, Indonesia), Ruruh Wuryani (Perguruan Tinggi Raharja, Indonesia) 141

Designing Kano-Based E-Service Quality Model to Improve User Satisfaction

Dinda Lestarini (Bandung Institute of Technology, Indonesia), Kridanto Surendro (Bandung Institute of Technology, Indonesia) 147

PS 2-B

Classification of Lung Nodules and Arteries in Computed Tomography Scan Image Using Principle Component Analysis

Sri Widodo (Apikes Citra Medika Surakarta, Indonesia), Ratnasari Rohmah (Muhammadiyah Surakarta University, Indonesia), Bana Handaga (Universitas Muhammadiyah Surakarta, Indonesia) 153

Determination of Spinal Curvature from Scoliosis X-ray Images Using K-Means and Curve Fitting for Early Detection of Scoliosis Disease

Bagus Adhi Kusuma (Stmik Amikom Purwokerto, Indonesia) 159

<i>Continuous and Transparent Access Control Framework for Electronic Health Records: A Preliminary Study</i>	
Manoj Jayabalan (Asia Pacific University of Technology & Innovation, Malaysia), Thomas O'Daniel (Asia Pacific University of Technology & Innovation, Malaysia)	165
<i>Comparing Three Time Series Segmentation Methods via Novel Evaluation Criteria</i>	
Huynh Thi Thu Thuy (Ton Duc Thang University, Vietnam), Tuan Anh Duong (Ho Chi Minh City University of Technology, Vietnam), Vo Thi Ngoc Chau (HCMUT, Vietnam)	171
<i>Software Development for Ultra Wide Band Radar Detector</i>	
Sulistyaningsih Sulistyaningsih (Indonesian Institute of Science (LIPI), Indonesia), Mashury Wahab (PPET-LIPI, Indonesia), Yussi Saputera (Indonesian Institute of Sciences, Indonesia)	177
<i>CBIR for Classification of Cow Types Using GLCM and Color Features Extraction</i>	
T. Sutojo (Dian Nuswantoro University, Indonesia), Pungky Septiana Tirajani (Dian Nuswantoro University, Indonesia), De Rosal Ignatius Moses Setiadi (Dian Nuswantoro University, Indonesia), Christy Atika Sari (Dian Nuswantoro University, Indonesia), Eko Hari Rachmawanto (Dian Nuswantoro University, Indonesia)	182

PS 2-C

<i>PIFA Antenna Design for 4G Wireless Communications</i>	
Amin Al Ka'bi (Australian College of Kuwait, Kuwait)	188
<i>Design and Implementation of Flood Detector Using Wireless Sensor Network with Mamdani's Fuzzy Logic Method</i>	
Ari Pratama (Telkom University, Indonesia), Rendy Munadi (Telkom University, Indonesia), Ratna Mayasari (Telkom University, Indonesia)	192
<i>OSPF Cost Impact Analysis on SDN Network</i>	
Ronald Adrian (Universitas Gadjah Mada, Indonesia), Akhmad Dahlan (Universitas Amikom Yogyakarta, Indonesia)	198
<i>State Space Modeling of Thermal in a Room for Temperature Estimation in Wireless Sensor Network</i>	
Nugroho Setiawan (Universitas Gadjah Mada, Indonesia), I Wayan Mustika (Universitas Gadjah Mada, Indonesia), Adha Imam Cahyadi (Universitas Gadjah Mada, Indonesia), Muhammad Fikri (Universitas Gadjah Mada, Indonesia)	202
<i>Design of Triple Band Printed Dipole Antenna for Indoor Small Cell Base Station in LTE Systems</i>	
Iswandi Iswandi (Gadjah Mada University, Indonesia), Albert Kristian Danan Jaya (Universitas Gadjah Mada, Indonesia), Eny Sukani Rahayu (Universitas Gadjah Mada, Indonesia)	207
<i>Constant Envelope DCT- And FFT-based OFDM Systems with Continuous Phase Chirp Modulation over Fading Channels</i>	
Rayan Alsisi (Western University, Canada), Raveendra Kolarramakrishna Rao (University of Western Ontario, Canada)	211

PS 3-A

<i>Walking Strategy Model Based on Zero Moment Point with Single Inverted Pendulum Approach in "T-FLoW" Humanoid Robot</i> Dimas Pristovani Riananda (Electronics Engineering Polytechnic Institute of Surabaya (EEPIS), Indonesia), Eko Henfri Binugroho (Electronic Engineering Polytechnic Institute of Surabaya, Indonesia), Raden Sanggar Dewanto (Electronic Engineering Polytechnic Institute of Surabaya (EEPIS), Indonesia), Dadet Pramadihanto (Electronics Engineering Polytechnic Institute of Surabaya, Indonesia)	217
<i>Implementation of Direct Pass Strategy During Moving Ball for "T-FLoW" Humanoid Robot</i> Dimas Pristovani Riananda (Electronics Engineering Polytechnic Institute of Surabaya (EEPIS), Indonesia), Ajir Ajir (Electronics Engineering Polytechnic Institute of Surabaya & ER2C, Indonesia), Eko Henfri Binugroho (Electronic Engineering Polytechnic Institute of Surabaya, Indonesia), Achmad Khalilullah (Electronic Engineering Polytechnic Institute of Surabaya, Indonesia), Raden Sanggar Dewanto (Electronic Engineering Polytechnic Institute of Surabaya (EEPIS), Indonesia), Dadet Pramadihanto (Electronics Engineering Polytechnic Institute of Surabaya, Indonesia)	223
<i>Stabilizing Two-Wheeled Robot Using Linear Quadratic Regulator and States Estimation</i> Nur Uddin (Universitas Pertamina, Indonesia), Teguh Aryo Nugroho (Universitas Pertamina, Indonesia), Wahyu Pramudito (University of Manchester, United Kingdom (Great Britain))	229
<i>Drowsiness Detection System Based on Eye-closure Using A Low-Cost EMG and ESP8266</i> Dian Artanto (Politeknik Mekatronika Sanata Dharma, Indonesia)	235
<i>Design of Birds Detector and Repellent Using Frequency Based Arduino Uno with Android System</i> Yahot Siahaan (Gunadarma University, Indonesia)	239
<i>Effects of Drug Abuse on Brain Activity in Frontal Cortex Area</i> Arjon Turnip (Indonesian Institute of Sciences, Indonesia)	244
<i>Hybrid Method Using 3-DES, DWT and LSB for Secure Image Steganography Algorithm</i> Giovani Ardiansyah (Dian Nuswantoro University, Indonesia), Christy Atika Sari (Dian Nuswantoro University, Indonesia), De Rosal Ignatius Moses Setiadi (Dian Nuswantoro University, Indonesia), Eko Hari Rachmawanto (Dian Nuswantoro University, Indonesia)	249
<i>Colenak: GPS Tracking Model for Post-Stroke Rehabilitation Program Using AES-CBC URL Encryption and QR-Code</i> Rolly Maulana Awangga (Politeknik Pos Indonesia, Indonesia), Trisna Irmayadi Hasanudin (Research Development Division Passion IT, Indonesia), Nuraini Siti Fathonah (Applied Bachelor Program of Informatics Engineering, Politeknik Pos Indonesia, Indonesia)	255

PS 3-B

<i>Fuzzy Logic Implementation to Optimize Multiple Inventories on Micro Small Medium Enterprises Using Mamdani Method (Case Study: Pekanita, Kroya, Cilacap)</i> Andi Dwi Riyanto (STMIK AMIKOM Purwokerto, Indonesia), Hendra Marcos (STMIK AMIKOM Purwokerto, Indonesia), Zulia Karini (STMIK Amikom Purwokerto, Indonesia), Kamal Amin (STMIK AMIKOM Purwokerto, Indonesia)	261
---	-----

<i>Feature Selection Methods in Improving Accuracy of Classifying Students' Academic Performance</i>	
Luthfia Rahman (Universitas Gadjah Mada, Indonesia), Noor Akhmad Setiawan (Universitas Gadjah Mada, Indonesia), Adhistya Erna Permanasari (Universitas Gadjah Mada, Indonesia)	267
<i>Planning Analysis and Control of Inventory Goods PT. X with Material Requirement Planning Method</i>	
Denny Andwiyani (STMIK Raharja, Indonesia), Muhammad Irsan (Universitas Islam Syekh Yusuf (UNIS), Indonesia), Dina Fitria Murad, DFM (Bina Nusantara University, Indonesia), Djameludin Djameludin (Universitas Islam Syekh Yusuf (UNIS), Indonesia)	272
<i>Evaluation of CESM/WRF Climate Simulations at High Resolution over Sumatra</i>	
Tomi Afrizal (Prince of Songkla University, Phuket Campus, Thailand), Chinnawat Surussavadee (King Mongkut's Institute of Technology Ladkrabang, Thailand)	278
<i>Instagram Online Shop's Comment Classification using Statistical Approach</i>	
Faisal Prabowo (Institut Teknologi Bandung, Indonesia), Ayu Purwarianti (Bandung Institute of Technology, Indonesia)	282
<i>Storing, Diving and Distributing of Comprehensive Knowledge Using Knowledge Management in the Library and Knowledge Center</i>	
Cornelius Sarungu (Bina Nusantara University & Diebold Nixdorf, Indonesia), Titan Titan (Bina Nusantara University, Indonesia), Dina Fitria Murad, DFM (Bina Nusantara University, Indonesia), Sunardi Sunardi (BINUS University, Indonesia)	288
<i>Comparative Analysis of K-Nearest Neighbor and Modified K-Nearest Neighbor Algorithm for Data Classification</i>	
Okfalisa Saktioto (University Islamic Suska Riau, Indonesia), Mustakim Mustakim (UIN Sultan Syarif Kasim Riau & Puzzle Research Data Technology, Indonesia), Ikbah Gazalba (UIN Sultan Syarif Kasim Riau, Indonesia), Nurul Gayatri Indah Reza (UIN Sultan Syarif Kasim Riau, Indonesia)	294
<i>Implementation of Data Mining Technique for Customer Relationship Management (CRM) on Online Shop Tokodipers.com With Fuzzy C-Means Clustering</i>	
Lisna Zahrotun, LZ (University of Ahmad Dahlan, Indonesia)	299

PS 3-C

<i>A Review Paper on Attendance Marking System Based on Face Recognition</i>	
Khem Puthea (Gadjah Mada University, Indonesia), Rudy Hartanto (Gadjah Mada University & Electrical Engineering and Information Technology Departmen, Faculty of Engineering Gadjah Mada University, Indonesia), Risanuri Hidayat (Gadjah Mada University (UGM), Indonesia)	304
<i>Distance-based Pattern Matching of DNA Sequences for Evaluating Primary Mutation</i>	
Berlian Al Kindhi (Institut Teknologi Sepuluh Nopember, Indonesia), Muh. Afif Hendrawan (Institut Teknologi Sepuluh Nopember, Indonesia), Diana Purwitasari (Institut Teknologi Sepuluh Nopember, Indonesia), Mauridhi Hery Purnomo (Institut of Technology Sepuluh Nopember, Indonesia)	310
<i>The Design of Face Recognition and Tracking for Human-Robot Interaction</i>	
D Anggraeni (UIN Sunan Gunung Djati & Bolabot Techno Robotic Institute, Indonesia), W. S. Mada Sanjaya (UIN Sunan Gunung Djati Bandung, Indonesia)	315

<i>Simple Duplicate Frame Detection of MJPEG Codec for Video Forensic</i> Syaiful Andy (Institut Teknologi Bandung, Indonesia), Antoni Haikal (Institut Teknologi Bandung, Indonesia)	321
<i>Handwritten Javanese Character Recognition Using Discriminative Deep Learning Technique</i> Muhamad Soleh (Faculty of Computer Science, Universitas Indonesia, Indonesia)	325
<i>Fuzzy Learning Vector Quantization, Neural Network and Fuzzy Systems for Classification Fundus Eye Images with Wavelet Transformation</i> Auli Damayanti (Universitas Airlangga, Indonesia)	331
<i>Wood Identification Based on Histogram of Oriented Gradient (HOG) Feature and Support Vector Machine (SVM) Classifier</i> Bambang Sugiarto (Indonesian Institute of Sciences, Indonesia), Esa Prakasa (Indonesian Institute of Sciences, Indonesia), Riyo Wardoyo (Indonesian Institute of Sciences, Indonesia)	337
<i>Design of Face Detection and Recognition System for Smart Home Security Application</i> Dwi Ana Ratna Wati (Universitas Islam Indonesia, Indonesia), Dika Abadianto (Universitas Islam Indonesia, Indonesia)	342

PS 4-A

<i>COMBINATION OF CASE-BASED REASONING AND NEAREST NEIGHBOUR FOR RECOMMENDATION OF VOLCANO STATUS</i> Firman Tempola (Universitas Khairun Ternate, Indonesia)	348
<i>Review on Fuzzy Expert System and Data Mining Techniques for the Diagnosis of Coronary Artery Disease</i> Wiga Maulana Baihaqi (STMIK AMIKOM Purwokerto, Indonesia), Taqwa Hariguna (STMIK AMIKOM Purwokerto, Indonesia), Tri Astuti (STMIK Amikom Purwokerto, Indonesia)	353
<i>Fingerprint Clustering Algorithm for Data Profiling Using Pentaho Data Integration</i> Febri Dwiandriani (Telkom University, Indonesia), Tien Fabrianti Kusumasari (Telkom University, Indonesia), Muhammad Hasibuan (Telkom University, Indonesia)	359
<i>A Hybrid Cat Swarm Optimization - Crow Search Algorithm for Vehicle Routing Problem with Time Windows</i> Asri Bektı Pratiwi (Universitas Airlangga, Indonesia)	364
<i>On Part of Speech Tagger for Indonesian Language</i> Raden Sandra Yuwana (LIPI & Research Center for Informatics, Indonesia), Asri Yuliani (Indonesian Institute of Sciences (LIPI), Indonesia), Hilman F Pardede (Indonesian Institute of Sciences, Indonesia)	369
<i>Applying Rough Set Theory for Filtering Large Number of Coronary Artery Disease (CAD) Rules</i> Alfiah Fajriani (University Of Gadjah Mada, Indonesia), Noor Akhmad Setiawan (Universitas Gadjah Mada, Indonesia), Teguh Bharata Adji (Universitas Gadjah Mada, Indonesia)	373

PS 4-B

<i>MPPT-Current Fed Push Pull Converter for DC Bus Source on Solar Home Application</i> Syechu Nugraha (Politeknik Elektronika Negeri Surabaya, Indonesia), Ony Qudsi (Politeknik Elektronika Negeri Surabaya & Institut Teknologi Sepuluh Nopember, Indonesia), Diah Yanaratri (Politeknik Elektronika Negeri Surabaya, Indonesia)	378
<i>Power Consumption Efficiency on LED Headlamp of Motorcycle</i> Sugondo Hadiyoso (Telkom University, Indonesia), Ahmad Zaky Ramdani (Jl. Ganesha No 10, Bandung & Institut Teknologi Bandung, Indonesia), Yuyun Siti Rohmah (Telkom University, Indonesia), Achmad Rizal (Universitas Gadjah Mada & Telkom University, Indonesia)	384
<i>Performance of Best Relay Selection in Single Relay Selection Scheme with Network Coding</i> Nurul Hidayati (Institut Teknologi Sepuluh Nopember, Indonesia), Suwadi Suwadi (ITS, Indonesia), Iwan Wirawan (ITS, Indonesia)	388
<i>Design of Embedded Zigbee Machine to Machine Smart Street Lighting System</i> Nur Iksan (Universitas Negeri Semarang, Indonesia)	392
<i>Design of Flooding Detection System Based on Velocity and Water Level DAM with ESP8266</i> Herman Yulindoko (State Polytechnic of Banyuwangi, Indonesia), Subono Subono (State Polytechnic of Banyuwangi, Indonesia), Vivien Wardhany (State Polytechnic of Banyuwangi, Indonesia), Sholeh Pramono (Faculty of Engineering, Brawijaya University, Indonesia), Ponco Siwindarto (Faculty of Engineering, Brawijaya University, Indonesia)	396
<i>Performance of Hybrid Relay Selection in Cooperative Communications System</i> Ummul Khair (Institut Teknologi Sepuluh Nopember, Indonesia), Suwadi Suwadi (ITS, Indonesia), Iwan Wirawan (ITS, Indonesia)	402

PS 4-C

<i>Spatial Flood Risk Mapping in East Java, Indonesia, Using Analytic Hierarchy Process - Natural Breaks Classification</i> Arna Fariza (Politeknik Elektronika Negeri Surabaya, Indonesia), Ilham Rusydi (Politeknik Elektronika Negeri Surabaya, Indonesia), Jauari Hasim (Electronic Engineering Polytechnic Institute of Surabaya, Indonesia), Arif Basofi (Politeknik Elektronika Negeri Surabaya, Indonesia)	406
<i>Landslide Susceptibility Mapping Using Ensemble Fuzzy Clustering: A Case Study in Ponorogo, East Java, Indonesia</i> Arif Basofi (Politeknik Elektronika Negeri Surabaya, Indonesia), Arna Fariza (Politeknik Elektronika Negeri Surabaya, Indonesia), Nailus Sa'ada, S (Politeknik Elektronika Negeri Surabaya, Indonesia)	412
<i>A New Determination of Regional Area by Utilizing Rectangular Approach Method and Google Maps</i> Adi Setiawan (Satya Wacana Christian University, Indonesia), Eko Sedyono (Satyawacana Christian University, Indonesia)	417
<i>Processing Next Generation Sequencing Data in Map-Reduce Framework Using Hadoop-BAM in a Computer Cluster</i> Rifki Sadikin (Research Center for Informatics, LIPI, Indonesia), Rofithah Omar (Universiti Teknologi PETRONAS, Malaysia), Nur Hidayah Mazni (Universiti Teknologi PETRONAS, Malaysia), Andria Arisal (Indonesian Institute of Sciences, Indonesia)	421

A Biological-like Memory Allocation Scheme Using Simulation
 Gasydech Lergchinnaboot (Chulalongkorn University, Thailand), Peraphon Sophatsathit
 (Chulalongkorn University, Thailand) 426

Database Integration Based on Combination Schema Matching Approach
 Mohammad Arief Faizal Rachman (Institut Teknologi Bandung, Indonesia), Putri Saptawati
 (Bandung Institute of Technology, Indonesia) 430

PS 5-A

Four-Input Four-Output Current-Mode Multifunction Filter Using CDTAs
 Montree Kumngern (King Mongkut's Institute of Technology Ladkrabang, Thailand) 436

Third Order Quadrature Sinusoidal Oscillator Using Single CDCTA
 Montree Kumngern (King Mongkut's Institute of Technology Ladkrabang, Thailand) 440

Analysis of Negative Emotion Using HRV Based ECG Signal of Elder People
 Giovanni Prenata (Institute of Technology Sepuluh Nopember, Indonesia) 444

*Design and Analysis Automatic Temperature Control in the Broiler Poultry Farm Based on
 Wireless Sensor Network*
 Dinar Wicaksono (Telkom University, Indonesia), Doan Perdana (Telkom University,
 Indonesia), Ratna Mayasari (Telkom University, Indonesia) 450

PS 5-B

*Decision Support System Design to Decide on the Latest Smartphone Using Analytical
 Hierarchy Process*
 Wirda Astari Galvani Natasya (University of Amikom Yogyakarta, Indonesia), Kusnawi Kusnawi
 (AMIKOM University, Indonesia) 456

*Heuristic Evaluation of Online Satisfaction Survey System for Public Healthcare Service:
 Applying Analytical Hierarchical Process*
 Sureena Matayong (Prince of Songkla University, Thailand), Suweena Yusoh (Prince of
 Songkla University, Thailand) 462

An Expert System for Diagnosing Dysgraphia
 Sari Sihwi (Sebelas Maret University, Indonesia) 468

*Evaluation of Learning Process Based on Massive Open Online Course (MOOC) Scheme in
 Numerical Method Subject*
 Eny Sukani Rahayu (UGM, Indonesia) 473

PS 5-C

Push Notification Based Login Using BLE Devices
 Gaurav Varshney (Indian Institute of Technology, Roorkee, India), Manoj Mishra (IIT Roorkee,
 India) 479

<i>Women Empowerment: One Stop Solution for Women</i>	
Sharifa Rania Mahmud (Military Institute of Science and Technology, Bangladesh), Jannatul Maowa (American International University-Bangladesh, Bangladesh), Ferry Wahyu Wibowo (Universitas AMIKOM Yogyakarta, Indonesia)	485
<i>Performance Analysis of Neural Networks-based Multi-criteria Recommender Systems</i>	
Mohammed Hassan (University of Aizu, Japan), Mohamed Hamada (UoA, Japan)	490
<i>A Triumvirate Blended Learning Method for Embedded Computational Devices Used in the Internet of Things: A Case Study</i>	
Kinyua Wachira (University of Nairobi, Kenya), Heywood Absaloms (University of Nairobi, Kenya), Jackson Mbutia (University of Nairobi, Kenya)	495

Author	Session	Start page
A		
Abadianto, Dika	Parallel Session 3-C.8	342
Absaloms, Heywood	Parallel Session 5-C.4	495
Adji, Teguh	Parallel Session 4-A.6	373
Adrian, Ronald	Parallel Session 2-C.3	198
Afrizal, Tomi	Parallel Session 3-B.4	278
Ahmad, Adang Suwandi	Parallel Session 1-A.8	35
Ajir, Ajir	Parallel Session 3-A.2	223
Al Ka'bi, Amin	Parallel Session 2-C.1	188
Al Kindhi, Berlian	Parallel Session 3-C.2	310
Alim, Endy Sjaiful	Parallel Session 1-B.8	73
Alsisi, Rayan	Parallel Session 2-C.6	211
Amin, Kamal	Parallel Session 3-B.1	261
Andwiyan, Denny	Parallel Session 3-B.3	272
Andy, Syaiful	Parallel Session 3-C.4	321
Anggraeni, D	Parallel Session 3-C.3	315
Ardiansyah, Giovani	Parallel Session 3-A.7	249
Arisal, Andria	Parallel Session 4-C.8	421
Artanto, Dian	Parallel Session 3-A.4	235
Astuti, Tri	Parallel Session 4-A.2	353
Awangga, Rolly Maulana	Parallel Session 3-A.8	255
B		
Bashari Rad, Babak	Parallel Session 1-B.6	62
Basofi, Arif	Parallel Session 4-C.4	406
	Parallel Session 4-C.6	412
Bejo, Agus	Parallel Session 1-C.7	111
Binugroho, Eko	Parallel Session 3-A.1	217
	Parallel Session 3-A.2	223
C		
Cahyadi, Adha Imam	Parallel Session 2-C.4	202
Chau, Vo Thi Ngoc	Parallel Session 1-A.3	11
	Parallel Session 2-B.5	171
Cherntanomwong, Panarat	Parallel Session 1-C.1	84
Chusyairi, Ahmad	Parallel Session 1-B.1	39
D		
Dahlan, Akhmad	Parallel Session 2-C.3	198
Damayanti, Auli	Parallel Session 3-C.6	331
Danan Jaya, Albert Kristian	Parallel Session 2-C.5	207
Dewanto, Raden	Parallel Session 3-A.1	217
	Parallel Session 3-A.2	223
Djamaludin, Djamaludin	Parallel Session 3-B.3	272
Duong, Tuan Anh	Parallel Session 2-B.5	171
Dwiandriani, Febri	Parallel Session 4-A.3	359
E		
Effendy, David	Parallel Session 1-C.2	90
Emanuel, Andi Wahyu Rahardjo	Parallel Session 1-B.5	57
F		
Fajriani, Alfiah	Parallel Session 4-A.6	373
Fariza, Arna	Parallel Session 4-C.4	406
	Parallel Session 4-C.6	412

Farizi, Rivka	Parallel Session 2-A.5	141
Fathonah, Nuraini Siti	Parallel Session 3-A.8	255
Fikri, Muhammad	Parallel Session 2-C.4	202

G

Gazalba, Ikkal	Parallel Session 3-B.7	294
----------------	------------------------	-----

H

Hadiyoso, Sugondo	Parallel Session 4-B.3	384
Haikal, Antoni	Parallel Session 3-C.4	321
Hamada, Mohamed	Parallel Session 5-C.3	490
Hanas, Veky	Parallel Session 2-A.2	126
Handaga, Bana	Parallel Session 2-B.1	153
Hariguna, Taqwa	Parallel Session 4-A.2	353
Hartanto, Rudy	Parallel Session 3-C.1	304
Hasanudin, Trisna Irmayadi	Parallel Session 3-A.8	255
Hasibuan, Muhammad	Parallel Session 4-A.3	359
Hasim, Jauari	Parallel Session 4-C.4	406
Hassan, Mohammed	Parallel Session 5-C.3	490
Hendrawan, Muh. Afif	Parallel Session 3-C.2	310
Heriana, Octa	Parallel Session 1-C.5	100
Hetty Primasari, Clara	Parallel Session 1-B.4	51
Hidayat, Risanuri	Parallel Session 3-C.1	304
Hidayati, Nurul	Parallel Session 4-B.5	388
Hoang, Van	Parallel Session 1-A.3	11

I

Iksan, Nur	Parallel Session 4-B.6	392
Irsan, Muhammad	Parallel Session 3-B.3	272
Ismail, Sarerusaenye	Parallel Session 1-B.6	62
Ismi, Dewi	Parallel Session 1-A.7	30
Iswandi, Iswandi	Parallel Session 2-C.5	207

J

Jayabalan, Manoj	Parallel Session 2-B.3	165
Jin, Hai	Parallel Session 1-B.8	73

K

Karini, Zulia	Parallel Session 3-B.1	261
Karna, Nyoman	Parallel Session 1-A.2	7
Khair, Ummul	Parallel Session 4-B.8	402
Khalilullah, Achmad	Parallel Session 3-A.2	223
Khodra, Masayu Leylia	Parallel Session 1-A.7	30
Kistijantoro, Achmad Imam	Parallel Session 1-A.7	30
Kosasi, Sandy	Parallel Session 1-B.7	68
Kristianto, Ryan	Parallel Session 1-B.3	45
Kumngern, Montree	Parallel Session 5-A.1	436
	Parallel Session 5-A.2	440
Kurniawan, Dayat	Parallel Session 1-C.5	100
Kusnawi, Kusnawi	Parallel Session 5-B.2	456
Kusrini, Kusrini	Parallel Session 1-C.2	90
	Parallel Session 2-A.3	132
Kusuma, Bagus	Parallel Session 2-B.2	159
Kusumasari, Tien	Parallel Session 4-A.3	359

L

Lergchinnaboot, Gasydech	Parallel Session 4-C.9	426
--------------------------	------------------------	-----

Lestarini, Dinda	Parallel Session 2-A.6	147
Letsoin, Hendrykus	Parallel Session 2-A.1	122
Luckyarno, Yakub Fahim	Parallel Session 1-C.1	84
M		
Mahmud, Sharifa Rania	Parallel Session 5-C.2	485
Maowa, Jannatul	Parallel Session 5-C.2	485
Marcos, Hendra	Parallel Session 3-B.1	261
Matayong, Sureena	Parallel Session 5-B.5	462
Maulana Baihaqi, Wiga	Parallel Session 4-A.2	353
Mayasari, Ratna	Parallel Session 5-A.4	450
	Parallel Session 2-C.2	192
Mazni, Nur Hidayah	Parallel Session 4-C.8	421
Mbuthia, Jackson	Parallel Session 5-C.4	495
Miftahushudur, Tajul	Parallel Session 1-C.5	100
Mirino, Antonio E.	Parallel Session 2-A.1	122
Mishra, Manoj	Parallel Session 5-C.1	479
Mr, Bagio	Parallel Session 1-B.1	39
Munadi, Rendy	Parallel Session 2-C.2	192
Murad, Dina	Parallel Session 3-B.3	272
	Parallel Session 3-B.6	288
Mustakim, Mustakim	Parallel Session 3-B.7	294
Mustika, I Wayan	Parallel Session 2-C.4	202
N		
Namonta, Pornchanok	Parallel Session 1-C.1	84
Natasya, Wirda Astari Galvani	Parallel Session 5-B.2	456
Nguyen, Phung	Parallel Session 1-A.3	11
NS, Pelsri	Parallel Session 1-B.1	39
Nugraha, Syechu	Parallel Session 4-B.1	378
Nugroho, Teguh Aryo	Parallel Session 3-A.3	229
O		
O'Daniel, Thomas	Parallel Session 2-B.3	165
Oktafiani, Folin	Parallel Session 1-C.6	106
Omar, Rofithah	Parallel Session 4-C.8	421
P		
Pardede, Hilman	Parallel Session 1-A.4	17
	Parallel Session 4-A.5	369
Perdana, Doan	Parallel Session 5-A.4	450
Permanasari, Adhistya	Parallel Session 3-B.2	267
Prabowo, Faisal	Parallel Session 3-B.5	282
Prahara, Adhi	Parallel Session 1-A.7	30
Prakasa, Esa	Parallel Session 3-C.7	337
Pramadihanto, Dadet	Parallel Session 3-A.1	217
	Parallel Session 3-A.2	223
Pramono, Sholeh	Parallel Session 4-B.7	396
Pramudito, Wahyu	Parallel Session 3-A.3	229
Pratama, Ari	Parallel Session 2-C.2	192
Pratiwi, Asri Bakti	Parallel Session 4-A.4	364
Prenata, Giovanni	Parallel Session 5-A.3	444
Purnomo, Mauridhi	Parallel Session 3-C.2	310
Purwarianti, Ayu	Parallel Session 3-B.5	282
	Parallel Session 1-B.9	78
Purwitasari, Diana	Parallel Session 3-C.2	310

Puthea, Khem	Parallel Session 3-C.1	304
--------------	------------------------	-----

Q

Qudsi, Ony	Parallel Session 4-B.1	378
------------	------------------------	-----

R

Rachman, Mohammad Arief	Parallel Session 4-C.10	430
Rachmawanto, Eko	Parallel Session 2-B.7	182
	Parallel Session 3-A.7	249
Rahayu, Eny Sukani	Parallel Session 2-C.5	207
Rahayu, Eny Sukani	Parallel Session 5-B.7	473
Rahman, Luthfia	Parallel Session 3-B.2	267
Ramdani, Ahmad Zaky	Parallel Session 4-B.3	384
Rao, Raveendra	Parallel Session 2-C.6	211
Ratna Wati, Dwi Ana	Parallel Session 3-C.8	342
Reza, Nurul Gayatri	Parallel Session 3-B.7	294
Riananda, Dimas	Parallel Session 3-A.1	217
	Parallel Session 3-A.2	223
Riyanto, Andi	Parallel Session 3-B.1	261
Rizal, Achmad	Parallel Session 4-B.3	384
Rohmah, Ratnasari	Parallel Session 2-B.1	153
Rohmah, Yuyun	Parallel Session 4-B.3	384
Rusydi, Ilham	Parallel Session 4-C.4	406

S

Sa'ada, Nailus	Parallel Session 4-C.6	412
Sabuna, Periantu	Parallel Session 1-A.1	1
Sadikin, Rifki	Parallel Session 4-C.8	421
Saktioto, Okfalisa	Parallel Session 3-B.7	294
Sanjaya, W.	Parallel Session 3-C.3	315
Santiko, Arief	Parallel Session 1-C.8	116
Santoso, Albertus	Parallel Session 2-A.2	126
Saptawati, Putri	Parallel Session 4-C.10	430
Saputera, Yussi	Parallel Session 2-B.6	177
Sari, Christy	Parallel Session 2-B.7	182
	Parallel Session 3-A.7	249
Sari, Lita	Parallel Session 1-C.3	95
Sarungu, Cornelius	Parallel Session 3-B.6	288
Sediyono, Eko	Parallel Session 4-C.7	417
Setiadi, De Rosal Ignatius Moses	Parallel Session 2-B.7	182
	Parallel Session 3-A.7	249
Setiawan, Adi	Parallel Session 4-C.7	417
Setiawan, Noor Akhmad	Parallel Session 3-B.2	267
	Parallel Session 4-A.6	373
Setiawan, Nugroho	Parallel Session 2-C.4	202
Setyohadi, Djoko	Parallel Session 1-A.1	1
	Parallel Session 1-B.4	51
	Parallel Session 2-A.4	136
Siahaan, Yahot	Parallel Session 3-A.5	239
Sihwi, Sari	Parallel Session 5-B.6	468
Siwindarto, Ponco	Parallel Session 4-B.7	396
Slarmanat, Chaken C. Z.	Parallel Session 2-A.1	122
Soleh, Muhamad	Parallel Session 3-C.5	325
Soleh, Oleh	Parallel Session 2-A.5	141
Sophatsathit, Peraphon	Parallel Session 4-C.9	426

Subono, Subono	Parallel Session 4-B.7	396
Sudarmawan, Sudarmawan	Parallel Session 1-C.2	90
	Parallel Session 2-A.3	132
Sugiarto, Bambang	Parallel Session 3-C.7	337
Sulaeman, Yaya	Parallel Session 1-C.8	116
Sulistyaningsih, Sulistyaningsih	Parallel Session 2-B.6	177
Sunardi, Sunardi	Parallel Session 3-B.6	288
Surendro, Kridanto	Parallel Session 2-A.6	147
Surussavadee, Chinnawat	Parallel Session 3-B.4	278
Sustika, Rika	Parallel Session 1-A.4	17
Sutojo, T.	Parallel Session 2-B.7	182
Suwadi, Suwadi	Parallel Session 4-B.5	388
	Parallel Session 4-B.8	402
Suyoto, Suyoto	Parallel Session 2-A.1	122
	Parallel Session 2-A.2	126

T

Taryana, Yana	Parallel Session 1-C.8	116
Tempola, Firman	Parallel Session 4-A.1	348
Thuy, Huynh	Parallel Session 2-B.5	171
Tirajani, Pungky Septiana	Parallel Session 2-B.7	182
Titan, Titan	Parallel Session 3-B.6	288
Tohir, Arik	Parallel Session 2-A.3	132
Turnip, Arjon	Parallel Session 3-A.6	244

U

Uddin, Nur	Parallel Session 3-A.3	229
Utami, Emma	Parallel Session 1-B.3	45

V

Varshney, Gaurav	Parallel Session 5-C.1	479
Vedyanto, Vedyanto	Parallel Session 1-B.7	68

W

Wachira, Kinyua	Parallel Session 5-C.4	495
Wael, Chaeriah	Parallel Session 1-C.5	100
Wahab, Mashury	Parallel Session 2-B.6	177
Wahyu, Yuyu	Parallel Session 1-C.8	116
Wahyuni, Elvira	Parallel Session 1-A.5	22
Wardhany, Vivien	Parallel Session 4-B.7	396
Wardoyo, Riyo	Parallel Session 3-C.7	337
Warman, Rahmat	Parallel Session 1-C.7	111
Wibirama, Sunu	Parallel Session 1-C.7	111
Wibisono, Muhammad Nurwiseso	Parallel Session 1-A.8	35
Wibisono, Yohanes	Parallel Session 2-A.4	136
Wibowo, Antoni	Parallel Session 1-A.6	26
Wibowo, Ferry Wahyu	Parallel Session 5-C.2	485
Wicaksono, Danar	Parallel Session 5-A.4	450
Widjaja, Andreas	Parallel Session 1-B.5	57
Widodo, Sri	Parallel Session 2-B.1	153
Wirawan, Iwan	Parallel Session 4-B.5	388
	Parallel Session 4-B.8	402
Wuryani, Ruruh	Parallel Session 2-A.5	141

Y

Yanaratri, Diah	Parallel Session 4-B.1	378
Yonata, Ryan	Parallel Session 1-B.9	78

Yuliandoko, Herman	Parallel Session 4-B.7	396
Yuliani, Asri	Parallel Session 1-A.4	17
	Parallel Session 4-A.5	369
Yuliani, I Dewa Ayu Eka	Parallel Session 1-B.7	68
Yusoh, Suweena	Parallel Session 5-B.5	462
Yuwana, Raden Sandra	Parallel Session 4-A.5	369

Z

Zaenudin, Efendi	Parallel Session 1-A.4	17
Zahrotun, Lisna	Parallel Session 3-B.8	299

Parallelized k-Means Clustering by Exploiting Instruction Level Parallelism at Low Occupancy

Adhi Prahara, Dewi Pramudi Ismi

Department of Informatics,
Faculty of Industrial Technology,
Universitas Ahmad Dahlan, Indonesia
adhi.prahara@tif.uad.ac.id, dewi.ismi@tif.uad.ac.id

Achmad Imam Kistijantoro, Masayu Leylia Khodra

Department of Informatics,
School of Electrical Engineering and Informatics, ITB
Bandung, Indonesia
imam@stei.itb.ac.id, masayu@stei.itb.ac.id

Abstract—Clustering is a technique to cluster data into defined number of cluster. K-means clustering is the most well-known and widely used clustering algorithm. While data become large in terms of volume, the needs of high performance computing (HPC) to perform data clustering is raising. One of the solutions with compromised budget but high efficiency is to utilize highly parallel architecture of Graphics Processing Unit (GPU). In this research, k-means clustering algorithm is implemented on GPU and optimized by exploiting instruction level parallelism (ILP) at low occupancy. ILP on k-means clustering algorithm is achieved by running a number of independent instruction per thread i.e. when calculating distance or sum of data in each cluster. By loading more works into thread at lower occupancy, the higher utilization can be achieved. Experiment on clustering several data shows that the proposed method can speed up k-means clustering several times faster than other parallelized k-means clustering and k-means implementation on CPU.

Keywords—*k-means clustering; parallel computing; instruction level parallelism; low occupancy; CUDA*

I. INTRODUCTION

One of the most prominent data analytics tasks is to create groups of data collection based on similarities between data. This grouping activity is called clustering. Clustering activity is usually performed for three main purposes; knowing the underlying structure of the data, natural classification of the data, and compressing the data by taking a prototype from each group of data [1]. Clustering is an unsupervised task. It means that no information/label about the data is known before the data is grouped. Similarity between data is measured from the intrinsic properties held by the data. The number of clusters generated from clustering activity is a predefined input variable. Each generated cluster contains data which are similar to each other. In each generated cluster, sum of distance between data points and its cluster center is minimized.

Clustering algorithms in the literature can be classified into partition clustering, hierarchical clustering, density based clustering and grid based clustering. The most legendary partition clustering algorithm is k-means clustering. K-means clustering is popular due to its easy and simple implementation and its favorable outcome [1].

Researchers have previously conducted attempts to improve performance of k-means clustering algorithms. In general, efforts to improve performance of k-means clustering are performed through two different approaches. The first approach

is done by modifying the original algorithm such that computation time can be reduced. Cluster center initialization becomes major concern in this matter since in the original k-means clustering initial cluster centers are appointed in random manner and thus affecting the number of iteration needed to reach convergence. The second approach is done by increasing hardware's computation capacity by employing parallel architecture such as OpenMP, Hadoop MapReduce, and GPU.

In this research we focus on parallel k-means clustering implemented on GPU. There are several existing GPU based k-means clustering, i.e. GPUMiner [2], UV_KMeans [3], HP_KMeans [4], and also [5-9]. With respect to the implementation of parallel k-means clustering in GPU, distance calculation and centroid update are two tasks in k-means which are implemented in parallel fashion. In [5] a specific centroid initialization is also proposed in parallel fashion besides distance calculation and centroid updates. Thread scheduling, solution of finding top-k elements, and parallel high dimension reduction are proposed in [6]. The challenge of GPU based k-means lies on the memory utilization. GPUMiner designed a bitmap to store the nearest centroid of each data point and used corresponding bits to update centroids. Major limitation of GPUMiner is that it uses global memory to store all data points and thus intensive global memory access causes latency. UV_KMeans tried to avoid global memory latency by copying all data points into texture memory and storing centroids in constant memory. UV_KMeans speedup is achieved by using cache mechanism to get high reading efficiency.

According to [10], better performance in GPU computation can be achieved by employing low occupancy. It declaims that hiding latency in GPU is only achieved when occupying more threads. It proves that increasing Instruction Level Parallelism (ILP) is another means of hiding arithmetic latency. Moreover it also shows that using fewer threads, faster computation is resulted as more registers per thread can be occupied.

This work aims at improving the performance of previous implementation parallel k-means clustering in GPU. Although several implementation of GPU based k-means clustering existed, ILP is not employed on those previous implementation. In this work we propose a parallelized k-means clustering by exploiting Instruction Level Parallelism (ILP) at low occupancy to gain better performance/faster execution time. In summary, the contribution of this work is given as follow:

- a. Calculation of distance between data to each cluster centers and sum of data in each cluster are optimized to gain the benefit of ILP.
- b. The kernels are launched using small number of threads to maintain low occupancy and achieve higher utilization by loading more works on thread.

The rest of this paper is organized as Section 2 presents the proposed parallelized k-means clustering, Section 3 presents the results and discussion, and the conclusion of this work is described in Section 4.

II. METHODOLOGY

A. k-Means Clustering

K-means clustering is an algorithm to partition data into k cluster. Data are grouped by the shortest distance between data and each cluster through iterative procedure. If the number of data is N , dimension of data is D , and the number of cluster is K then the general procedure of k-means clustering algorithm can be explained in the following steps.

1. Initialize cluster centers. There are some methods to initialize cluster centers such as using random data, seeding, or simply use the first K data.
2. Find the minimum distance between data to each cluster centers using (1) where d_i is the distance of i^{th} data, x_i is the i^{th} data, and μ_j is the j^{th} cluster center. The distance measurement usually uses Euclidean distance or can be any distance metric.

$$d_i = \arg \min_{1 \leq j \leq K} \|x_i - \mu_j\|^2 \quad (1)$$

3. Assign data to the nearest cluster center from step 2.
4. Compute the new cluster centers using (2) where μ_j is the j^{th} cluster center, n_j is the number of data in j^{th} cluster, and x_i^j is the i^{th} data belong to j^{th} cluster.

$$\mu_j = \frac{\sum_{i=1}^{n_j} x_i^j}{n_j} \quad (2)$$

5. Repeat step 2 to step 4 until converged or reach the termination criteria. There are some convergence terms such as the members of each cluster did not change, the distances between new cluster centers and previous cluster centers are less than threshold, or simply the iteration has reached maximum number of iteration.

Parallelized k-means clustering is done with the same procedure as the original k-means, but the computation is performed in parallel fashion. In this research, authors use the first K data to initialize cluster centers, Euclidean distance as distance measurement, also a distance threshold and maximum number of iteration as termination criteria.

B. Low Occupancy in GPU

GPU is a highly parallel architecture consists of streaming multiprocessors (SM). GPU is structured into grids, blocks, and threads and has several types of memory e.g. global memory, local memory, shared memory, registers, constant memory, and texture memory. Every memory has different latency and the slowest is global memory. According to [11], the access to global memory should be minimized and perform the operation on faster memory such as registers or shared memory.

Another optimization is to hide the latency by running more threads on multiprocessor or on thread block. The Thread Level Parallelism (TLP) can be achieved with this procedure by assigning a number of independent operations on different thread. This procedure also increases the occupancy. However, by maximizing the occupancy sometimes resulted in loss performance [10]. Therefore, authors perform parallelized k-means clustering at low occupancy by using a few numbers of threads in a block in this research.

At lower occupancy, the latency can also be hidden with Instruction Level Parallelism (ILP) beside TLP. ILP can be achieved by performing a number of independent instructions on a thread. This procedure can increase the utilization [10]. The benefits of lower occupancy are no need to synchronize the thread if the number of thread is within the warp and the threads will have more memory resources.

C. Instruction Level Parallelism

ILP is a measure of average number of instructions that can be executed at the same time by a processor. ILP relies on dependency between instructions. Instructions can be executed simultaneously if the instructions are independent to each other, otherwise the instructions must be executed in order. There are different types of dependencies that affect ILP which explained as follow.

1. **Data dependencies.** The dependency occurs when the result of one instruction is used directly or indirectly by another instruction.
2. **Name dependencies.** The dependency occurs when instructions try using the same register or memory location. The common case is one instruction tries to read a memory location while another instruction tries to write on that memory location or some instructions try to write on the same memory location.
3. **Data hazard.** Data hazard occurs when there is data dependency between instructions and close enough to make the pipeline to stall. The common cases are RAW (read after write) when one instruction tries to read a source before another instruction write it, WAW (write after write) when one instruction tries to write a source before it is written by another instruction, or WAR (write after read) when one instruction tries to write a source before another instruction read it.
4. **Control dependencies.** The dependency that determines the order of instructions with respect to branch. Instructions inside a branch cannot be moved before the branch evaluated.

By avoiding the previously mentioned dependencies, ILP can be achieved. In k-means clustering algorithm, the potential operations to be executed in ILP are the calculation of distance and sum of data in each cluster.

III. RESULT AND DISCUSSION

Our proposed parallelized k-means clustering is written in C++ with CUDA and tested on Intel Core i7 6700K, NVidia GeForce GTX 1070 8GB, and 16GB of RAM. Authors use KDD Cup 1999 dataset [12], the same dataset used in [2] which consist of 50,000, 100,000, and 200,000 data with 41 dimensions. Authors analyze the speed up using variation of ILP levels and

number of thread. The experiment compares our proposed parallelized k-means clustering with k-means implementation on CPU and k-means bitmap from GPUMiner [2] by varying number of data and number of cluster.

A. Parallelized k-Means Clustering

Our proposed parallelized k-means clustering utilizes two kernels. The first kernel mainly computes two tasks: find minimum distance between data and cluster centers and also sum of data and number of data in each cluster. The second kernel computes new cluster centers. The implementation of our proposed parallel k-means is explained as follow.

1) Optimization in distance calculation

The closest Euclidean distance between data and each cluster centers is used to determine the membership of data. To find the closest distance, cluster centers are compared repeatedly as many as the number of data. This condition can make excessive access to global memory. Therefore, authors create shared memory allocation for cluster centers to reduce access to global memory and gain the benefit of faster latency of shared memory.

On distance calculation, the algorithm is optimized for ILP. If D is the number of data dimension and L is the number of ILP level then Algorithm 1.a. shows the distance calculation and Algorithm 1.b shows the distance calculation which optimized for ILP. In Algorithm 1.a., the instructions have data dependencies and will run D times to give the sum result.

In Algorithm 1.b, the distance calculation is divided into three parts. The ILP part (marked with orange color in line 7-8) makes L heavy distance calculations executed simultaneously because the instructions are independent. The sum part (marked with green color in line 10-11) sums the L distance data which saved in static memory. The remainder part (marked with blue color in line 13-14) computes the distance using Algorithm 1.a. The remainder part will only be computed when the number of dimension is not divisible by the number of ILP level.

Algorithm 1.a. Distance calculation

```

dist ← 0
for j = 0 to D do
    dist ← dist + (data[j] - centroid[j])2
dist ← sqrt(dist)

```

Algorithm 1.b. Distance calculation optimized for ILP

```

tD ← D/L // divide the number of dimension with ILP level
remD ← mod(D, L) // remainder after division
temp[L] // static memory in registers

dist ← 0
for j = 0 to tD do
    // ILP part
    for r = 0 to L do (7)
        temp[r] ← (data[j + r · tD] - centroid[j + r · tD])2 (8)
    // sum part
    for r = 0 to L do (10)
        dist = dist + temp[r] (11)
    // remainder part
    for r = 0 to remD do (13)
        dist ← dist + (data[r + L · tD] - centroid[r + L · tD])2 (14)
dist ← sqrt(dist)

```

2) Optimization in sum of data calculation

Before calculating new cluster centers in the second kernel, the first kernel will sum the data and calculate number of data in each cluster. With N data which want to write into K clusters, it can produce data race and excessive access to global memory. Authors use atomic addition in shared memory to solve this problem. Atomic addition ensures that data will be queued if they want to write into the same memory address. The sum of data and number of data in each cluster will be computed partially in shared memory to reduce the data race and global memory access. After the computation is done, each block sums the partially calculated sum of data and number of data in each cluster to global memory using atomic addition.

To further optimize the sum of data computation in Algorithm 2.a., authors use ILP as shown in Algorithm 2.b. Instructions in Algorithm 2.a. are already independent but there is a limit on how many ILP can be executed at once because the limited resources of registers. By using nested loop, the ILP can be maintained. The algorithm is divided into two parts: ILP part (marked by orange color in line 7-8 and in line 16-17) and remainder part (marked by blue color in line 10-11 and in line 19-20). The addition instructions in ILP part are independent and can be executed simultaneously. The ILP level is easily adjusted to lies within the scope memory of registers.

Algorithm 2.a. Computation of partial sum of data to shared memory and the merger to global memory

```

// partial sum of data to shared memory
for j = 0 to D do
    atomicAdd(smем[j], data[j])
... // other routines
// merge partial sum to global memory
for j = 0 to D do
    atomicAdd(sumOfData[j], smем[j])

```

Algorithm 2.b. Computation of partial sum of data and the merger to global memory optimized for ILP

```

tD ← D/L // divide the number of dimension with ILP level
remD ← mod(D, L) // remainder after division
temp[L] // static memory in registers

// partial sum of data to shared memory
for j = 0 to tD do
    // ILP part
    for r = 0 to L do (7)
        atomicAdd(smем[j + r · tD], data[j + r · tD]) (8)
    // remainder part
    for r = 0 to remD do (10)
        atomicAdd(smем[r + L · tD], data[r + L · tD]) (11)
... // other routines
// merge partial sum to global memory
for j = 0 to tD do (14)
    // ILP part
    for r = 0 to L do (16)
        atomicAdd(sumOfData[j + r · tD], smем[j + r · tD]) (17)
    // remainder part
    for r = 0 to remD do (19)
        atomicAdd(sumOfData[r + L · tD], smем[r + L · tD]) (20)

```

B. Performance of Parallel k-Means with ILP

Authors perform experiment to measure the speed up of ILP optimized algorithm in parallelized k-means. The experiment is conducted on dataset of 50,000 data with 41 dimensions and with 24 number of cluster. Fig. 1 shows the computational time according to the variation of ILP level. In Fig. 1, ILP optimized algorithm can decrease the computational time but not in all levels. The drawback using ILP optimized algorithm is when dealing with number of data which not divisible by the number of ILP level, the remainder will be processed in serial manner. Therefore, authors use ILP level two which resulted in smaller remainder of any possibilities number of data.

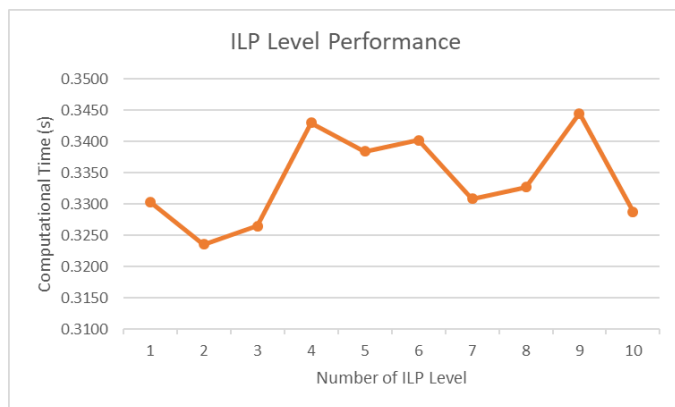


Fig. 1. Performance for different level of ILP

C. Kernel Execution in Low Occupancy

The proposed parallelized k-means clustering is executed in low occupancy. According to [10], higher occupancy does not always guarantee better performance. The experiment measures computational time against variation number of thread using dataset of 50,000 data with 41 dimensions and with 24 number of cluster as shown in Fig. 2. From Fig. 2, the performance of the proposed parallelized k-means clustering is better at lower occupancy which has less than 64 threads and worsen when use less than 8 threads. The lowest theoretical occupancy authors can achieve is 18.75% when using number of thread less equal than 32. Authors choose 32 threads to run the kernel to gain the benefit of low occupancy and thread warp. At low occupancy, a thread also has more memory resources and programmer can load more works on thread.

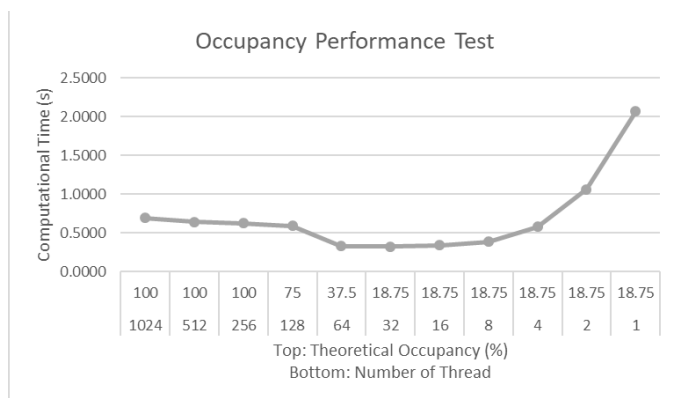


Fig. 2. Performance at different level of occupancy

D. Performance Comparison

The performance of proposed parallelized k-means clustering algorithm on GPU is compared with the same implementation on CPU and GPUMiner k-means bitmap [2]. The experiment measures computational time with respect to variation number of data (N) and number of cluster (K) as shown in Table I. Fig. 3 shows the performance comparison using 50,000 data with 24 clusters. From Table I, the speed-up from CPU implementation is approx. 30x faster on small dataset and approx. 20x faster on large dataset. The comparison of speed up with other GPU implementation is approx. 20 times faster on large dataset. The result proved that our parallelized k-means clustering algorithm with ILP optimized in low occupancy is superior with other implementation on CPU and GPU.

TABLE I. COMPARISON PERFORMANCE BETWEEN DIFFERENT IMPLEMENTATION

K	N	Computational Time (s)		
		CPU	GPUMiner (k-means bitmap) [2]	Proposed Method
24	50,000	10.0950	43.4554	0.3167
24	100,000	34.1760	146.8060	0.9287
24	200,000	64.0850	307.0507	1.9855
50	50,000	30.1850	48.2371	0.9033
50	100,000	87.2750	141.7453	2.6296
50	200,000	165.9790	396.6267	5.1411
100	50,000	45.1780	39.2931	1.9294
100	100,000	169.7930	150.3344	8.2932
100	200,000	388.4790	300.1742	16.2428

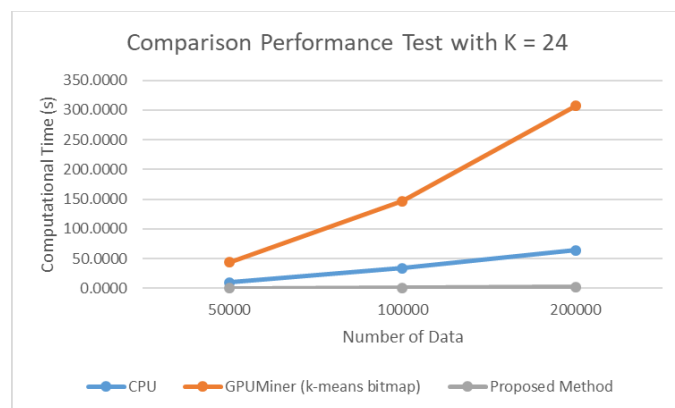


Fig. 3. Comparison performance with 50,000 data

IV. CONCLUSION

The proposed parallelized k-means clustering algorithm exploits ILP at low occupancy. The experiment shows that the proposed method can gain the benefit of ILP level two by reducing the drawback of ILP when dealing with non-divisible number of data with the number of ILP level. At low occupancy with 32 threads in a block, threads can gain more benefit i.e. having more memory resources, thread warps, and by loading more works into thread, higher utilization can be achieved. When compared to CPU implementation and other GPU

implementation (GPUMiner), the proposed parallelized k-means clustering is superior with significant speed up. For future work, authors will use multi GPUs to further increase the performance of parallelized k-means clustering.

ACKNOWLEDGMENT

This research is supported by The Indonesian Ministry of Research, Technology and Higher Education (RISTEK-DIKTI) research grant no. PEKERTI-056/SP3/LPP-UAD/IV/2017

REFERENCES

- [1] A.K. Jain, "Data clustering : 50 years beyond K-means", Pattern Recognition Letters, vol.31, pp.651-666, 2010.
- [2] W. Fang, K. K. Lau, M. Lu, X. Xiao, C. K. Lam, P. Y. Yang, B. He, Q. Luo, P. V. Sander, and K. Yang, "Parallel data mining on graphics processors," *Hong Kong Univ. Sci. Techn*
- [3] S. Che, M. Boyer, J. Meng, D. Tarjan, J. W. Sheaffer, and K. Skadron, "A performance study of general-purpose applications on graphics processors using CUDA," *J. Parallel Distrib. Comput.*, vol. 68, no. 10, pp. 1370–1380, 2008.*ol. Tech. Rep. HKUST-CS08-07*, p. 1, 2008.
- [4] R. Wu, B. Zhang, M. Hsu, Clustering billions of data points using GPUs, in: UCHPC–MAW'09: Proceedings of the Combined Workshops on UnConventional High Performance Computing Workshop Plus Memory Access Workshop, Ischia, Italy, 2009, pp. 1–6.
- [5] J. Bhimani, M. Leeser, and N. Mi, "Accelerating K-Means clustering with parallel implementations and GPU computing," *2015 IEEE High Perform. Extrem. Comput. Conf. HPEC 2015*, 2015.
- [6] L. Jian, C. Wang, Y. Liu, S. Liang, W. Yi, and Y. Shi, "Parallel data mining techniques on Graphics Processing Unit with Compute Unified Device Architecture (CUDA)," in *Journal of Supercomputing*, 2013, vol. 64, no. 3, pp. 942–967.
- [7] M. Zechner and M. Granitzer, "Accelerating k-means on the graphics processor via CUDA," in *Proceedings of the 1st International Conference on Intensive Applications and Services, INTENSIVE 2009*, 2009, pp. 7–15.
- [8] Y. Li, K. Zhao, X. Chu, and J. Liu, "Speeding up k-Means algorithm by GPUs," *J. Comput. Syst. Sci.*, vol. 79, no. 2, pp. 216–229, 2013.
- [9] H. T. Bai, L. L. He, D. T. Ouyang, Z. S. Li, and H. Li, "K-means on commodity GPUs with CUDA," *2009 WRI World Congr. Comput. Sci. Inf. Eng. CSIE 2009*, vol. 3, pp. 651–655, 2009
- [10] V. Volkov, "Better performance at lower occupancy," in Proceedings of the GPU technology conference, GTC, 2010, vol. 10, p. 16.
- [11] S. Cook, *CUDA programming : a developer's guide to parallel computing with GPUs*. Morgan Kaufmann, 2013.
- [12] KDDCup 1999 dataset. Available online at <http://kdd.ics.uci.edu/databases/kddcup99/kddcup99.html>. Accessed on September 8th, 2017.

ICITISEE 2017

www.icitisee.amikom.ac.id



Organized by:



Supported by:

