

Chaotic Particle Swarm Optimization for Solving Reactive Power Optimization Problem

by Alfian Ma'arif

Submission date: 11-Feb-2022 11:40AM (UTC+0700)

Submission ID: 1759825353

File name: Optimization_for_Solving_Reactive_Power_Optimization_Problem.pdf (1.24M)

Word count: 4673

Character count: 24323

Chaotic Particle Swarm Optimization for Solving Reactive Power Optimization Problem

Omar Muhammed Neda^{a,1,*}, Alfian Ma'arif^{b,2}

^a Department of Electrical Engineering, 9th nni, Diwan Endowment, Iraq

^b Department of Electrical Engineering, Universitas Ahmad Dahlan, Yogyakarta, Indonesia

¹ omar.ne.da88@gmail.com; ² alfianmaarif@ee.uad.ac.id

* Corresponding Author

ARTICLE INFO

Article history

Received December 20, 2021

Revised January 08, 2022

Accepted January 28, 2022

Keywords

Reactive Power Optimization (RPO);
 Optimal Load Flow;
 Simple PSO;
 Chaotic PSO (CPSO)

ABSTRACT

The losses in electrical power systems are a great problem. Multiple methods have been utilized to decrease power losses in transmission lines. The proper adjusting of reactive power resource is one way to minimize the losses in any power system. Reactive Power Optimization (RPO) problem is a nonlinear and complex optimization problem and consists equality and inequality constraints. The RPO is highly essential in the operation and control of power systems. Therefore, the study concentrates on the Optimal Load Flow calculation in solving RPO problems. The Simple Particle Swarm Optimization (PSO) often falls into the local optima solution. To prevent this limitation and speed up the convergence for the Simple PSO algorithm, this study employed an improved hybrid algorithm based on Chaotic theory with PSO, called Chaotic PSO (CPSO) algorithm. Undeniably, this merging of chaotic theory in PSO algorithm can be an efficient method to slip very easily from local optima compared to Simple PSO algorithm due to remarkable behavior and high ability of the chaos. In this study, the PSO algorithm was utilized as an optimization tool for solving the RPO problem; the main objective in this study is to decrease the power loss and enhance the voltage profile in the power system. The presented algorithm was tested on IEEE Node-14 system. The simulation implications for this system reveal that the CPSO algorithm provides the best results. It had a high ability to minimize transmission line losses and improve the system's voltage profile compared to the Simple PSO and other approaches in the literature.

This is an open access article under the CC-BY-SA license.



1. Introduction

Reactive Power Optimization (RPO) problem is considered a complex and non-linear optimization problem. It plays a vital role in the power system operation and control. The main aims of RPO problem in this study are to decrease power loss and enhance voltage profile for the system, and these aims can be attained via a proper alteration for reactive power control parameters like generators voltage value (V_G), the value of VAR sources that injected from the

shunt capacitor (Q_C) and transformer taps (Tap) while dealing with some equality and inequality constraints containing load flow equations at the same time [1].

The RPO problem calculations are considered part of the Optimal Load Flow or (OPF) calculations. Carpentier has first introduced the OPF calculations [2][3]. Since then, many researchers have been working on solving the OPF problem by utilizing multiple methods, such as recursive quadratic, linear and nonlinear programming, and the interior point method [4][5][12][7]. Sun et al. have presented the Newton approach for the solution of OPF [8]. Lai et al. have presented an improved Genetic Algorithm (GA) for solving OPF [9].

In the past, several traditional optimization techniques have been presented for solving RPO problem like Interior Point Methods (IPM) [10], Linear Programming (LP) [11], non-linear programming [12], Gradient Search (GS) [13], Quadratic Programming (QP) [14] and Dynamic Programming (DP) [15]. These algorithms have several limitations, such as being unable to deal with non-continuous and complex optimization problems and dealing with problems that include a vast number of variables, huge calculations, big implementation time, and convergence to the nearby local optima. So, it becomes essential for finding and developing methods that can avoid these limitations.

Recently, several computational optimization techniques have been presented in order to prevent these limitations of the traditional optimization algorithms like Genetic Algorithm (GA) [16], hybrid GA-IPM [17], fuzzy technique [18], Moth Flame Optimization (MFO) [19] and Particle Swarm Optimization (PSO) [20]. PSO has appeared as a beneficial tool for engineering global optimization in solving this problem among these algorithms. The benefits of the PSO algorithm are simple, fast, easy to implement; it has a flexible and balanced mechanism to improve the local and global exploration capabilities. However, it does not mean that PSO algorithm does not contain any disadvantages. In solving non-continuous and complex problems, this algorithm is declining very easily to the local minima at the premature convergence; on the other hand, its performance is also dependent on its parameters settings.

So, in this study, to avoid these disadvantages and enhance and develop the searching ability and quality of the Simple PSO algorithm, PSO and chaotic theory were merged to form a hybrid algorithm called Chaotic PSO (CPSO) algorithm. Undeniably, this merging of chaotic theory with PSO algorithm can be an efficient method to slip very easily from local optima compared to simple PSO algorithm due to remarkable behavior and great ability of the chaotic theory while helping decrease the calculation time. The CPSO algorithm is utilized as an optimization tool to obtain the best values of reactive power control parameters (i.e. V_G , Tap and Q_C), decreasing power loss (P_{loss}) and enhancing voltage profile. The CPSO was evaluated and examined on IEEE Node -14 system for solving the RPO problem. The simulation implications confirm that the results in the CPSO algorithm are best in terms of decreasing P_{loss} and enhancing the voltage profile for the power system. Moreover, these results prove the efficiency and ability of the CPSO algorithm in solving RPO problem and any complex problem that include a vast number of variables in a power system. It also had the ability and superiority to get the best solution with the least iteration compared to those in Simple PSO and other techniques in the literature.

2. Problem Formulation

2.1. Objective Function

The great objective in this work is to decrease the Power Losses (P_{loss}) for the system via proper management of reactive power control parameters (V_G , Tap and Q_C) while dealing with numbers of equality and inequality constraints at the same time. The P_{Loss} can be expressed as [21]

$$\text{Min } P_{\text{loss}} = \sum_{K=1}^{Ntl} G_K (V_i^2 + V_j^2 - 2V_i V_j \cos(\phi_i - \phi_j)) \quad (1)$$

where P_{loss} is the active power loss function, Ntl depicts the number of branches, and G_K depicts the conductance of branch K . The V_i, V_j are voltage magnitudes at nodes i and j . The ϕ_i, ϕ_j are the difference angles voltage at node i and j .

2.2. Constrains

2.2.1. Equality Constrains

These constraints are the load flow equation and defined as follows [22]:

$$\begin{cases} P_{Gi} - P_{Di} - V_i \sum_{j=1}^{NB} V_j (G_{ij} \cos(\phi_{ij}) + B_{ij} \sin(\phi_{ij})) = 0 \\ Q_{Gi} - Q_{Di} - V_i \sum_{j=1}^{NB} V_j (G_{ij} \sin(\phi_{ij}) - B_{ij} \cos(\phi_{ij})) = 0 \end{cases} \quad (2)$$

where P_{Gi}, Q_{Gi} are the real (MW) and reactive power (VAR) output from the generators at node i . The P_{Di}, Q_{Di} are the real (MW) and reactive power (VAR) load demand at node i . The G_{ij}, B_{ij} are the mutual and susceptance conductance among i node and j node. The ϕ_{ij} depicts the voltage angle magnitude in node i and j .

2.2.2. Inequality Constraints

These constraints contain:

1. Constraints of generator: these constraints have voltage in generator nodes (V_G) and reactive power output (Q_G) of all generators are limited by their *min* and *max* bounds as

$$V_{Gi-\text{min}} \leq V_{Gi} \leq V_{Gi-\text{max}}, \quad i = 1, \dots, N_G \quad (3)$$

$$Q_{Gi-\text{min}} \leq Q_{Gi} \leq Q_{Gi-\text{max}}, \quad i = 1, \dots, N_G \quad (4)$$

2. Transformer constraints: these constraints have lower and upper bounds as

$$\text{Tap}_{i-\text{min}} \leq \text{Tap}_i \leq \text{Tap}_{i-\text{max}} \quad i = 1, \dots, N_T \quad (5)$$

3. Shunt VAR source Q_C constrains: switch-able VAR compensation (Q_C) are bounded as

$$Q_{Ci-\text{min}} \leq Q_{Ci} \leq Q_{Ci-\text{max}} \quad i = 1, \dots, N_T \quad (6)$$

4. Security constraints: these constraints contain the limit of load node voltages as

$$V_{Li-\text{min}} \leq V_{Li} \leq V_{Li-\text{max}} \quad i = 1, \dots, N_{PQ} \quad (7)$$

2.2.3. The Objective Function

In this problem, the dependent variables can be added to equation (1) by utilizing penalty factors to constrain, so equation (1) can be represented as [22]

$$\text{Min } F = P_{\text{loss}} + \lambda_V \sum_{i=1}^{NL} (V_{li} - V_{li}^{\text{lim}})^2 + \lambda_Q \sum_{i=1}^{NG} (Q_{Gi} - Q_{Gi}^{\text{lim}})^2 \quad (8)$$

where λ_V, λ_Q are the penalty terms and these terms are big positive constants, NL depicts the number of loads nodes that violate the limits, NG depicts the number of reactive power output of generator nodes that outside the bounds and $V_{Li}^{lim}, Q_{Gi}^{lim}$ are described as

$$v_{Li}^{lim} = \begin{cases} v_{Li}^{min} & \text{if } v_{Li} < v_{Li}^{min} \\ v_{Li}^{max} & \text{if } v_{Li} > v_{Li}^{max} \end{cases} \quad (9)$$

$$Q_{Gi}^{lim} = \begin{cases} Q_{Gi}^{min} & \text{if } v_{Li} < Q_{Gi}^{min} \\ Q_{Gi}^{max} & \text{if } v_{Li} > Q_{Gi}^{max} \end{cases} \quad (10)$$

2.2.4. Concept of Average Voltage

In this study, the new average voltage index is suggested to deal with all voltage nodes as well as satisfy most of the electrical utility limits. The equation of this concept can be written as

$$V_{av} = \frac{\sum_{i=1}^{N_n} V_i}{N_n} \quad (11)$$

where V_{av} depicts the average voltage of all systems, V_i depicts the voltage in node i and N_n depicts the total number of nodes.

3. Optimization

3.1. Simple PSO Algorithm

PSO algorithm is a better type stochastic optimization algorithm. The basic concept of this algorithm came from the social behavior of the animals when searching for food like fish schooling and bird flocking. This algorithm has beneficial characteristics; it is simple, fast, can be applied to solve optimization problems. It guarantees the best solution with less calculation time, and its convergence characteristic is very stable than other stochastic algorithms. Moreover, it is capable of dealing with continuous and discrete variables and does not have mutation and crossover operation like in the genetic algorithm. In PSO, every possible solution represents an individual. An individual represents the candidate solution, and every group of individuals represents a swarm. Kennedy and Eberhart were first enhanced and developed this algorithm in 1995 [23]. Each individual in the PSO algorithm has the best position discovered by the experience of the individual itself, and it is stored in a memory called the local best position (P_{best}). The best position discovered between all individuals (P_{best}) in the swarm also stored in a memory called global best position (G_{best}). At every iteration, the location of P_{best} and G_{best} are changing. Then, the velocity and position of every individual in the swarm are modified by calculating its current velocity and location based on P_{best} and G_{best} . The velocity and position from P_{best} and G_{best} of the agents will be changed using equations (12) and (13) [24].

$$V_i^{k+1} = K[W_{PSO}V_i^k + C_1 \cdot R_1 * (P_{best(i)}^k - X_i^k) + C_2 R_2 (G_{best(i)}^k - X_i^k)] \quad (12)$$

$$X_i^{k+1} = X_i^k + V_i^{k+1} \quad (13)$$

where W_{PSO} is the inertia coefficient of PSO technique, V_i represents the velocity of individual, C_1, C_2 are the two learning factors that used to pull each agent to P_{best} location and G_{best} location within range [0 to 2.05] and R_1, R_2 are the two random numbers within the limit [0 to 1], $P_{best(i)}$ depicts the local best position, $G_{best(i)}$ represents the global best position, X_i represents the position of the individual and K depicts the constriction factor. The constriction factor is used to warrant the convergence characteristic of Simple PSO to a stable point, devolving the need for velocity fixing, which Shi first introduced. He indicated that utilizing this factor may be necessary and can be expressed as follows [25].

$$K = \frac{2}{\left|2 - \phi - \sqrt{\phi^2 - 4\phi}\right|}, \quad \phi = C_1 + C_2, \quad \phi \geq 4 \quad (14)$$

2
In this study, (W_{PSO}) is reduced from (0.9 to 0.4) linearly through iterations to attain a balance between global exploration (G_{best}) and local exploitation (P_{best}) as follows:

$$W_{PSO} = W_{max} - \left(\frac{W_{max} - W_{min}}{max_{iteration}}\right) \cdot iter \quad (15)$$

where W_{max} depicts the max (upper) value of weight, W_{min} depicts the min (lower) value of weight, $iter$ depicts the current iteration and $max_{iteration}$ is the max (upper) iterations.

3.2. CPSO Algorithm

6
The Simple PSO algorithm mainly relies on its parameters, making it difficult and sometimes unable to reach the precise solution criteria in some cases, especially when the number of parameters of the optimization problem is enormous. A chaos theory merged with a PSO algorithm to form a hybrid algorithm called CPSO, helped the CPSO algorithm to slip very easily from the local optima due to the remarkable behavior and high ability of the chaos [26]. In this study, the logistic map equation adopted for establishing the hybrid CPSO algorithm is described by the following equation [27].

$$\beta^{k+1} = \mu \cdot \beta^k \cdot (1 - \beta^k), \quad 0 \leq \beta^1 \leq 1 \quad (16)$$

where the control parameter μ is set within a range [0.0–4.0], k is the number of the iterations (steps). The magnitude of μ decides whether β stabilizes at a constant area, oscillates within restricted limits, or β moves chaotically in an unpredictable form. Equation (17) is deterministic; it shows chaotic dynamics when $\mu = 4.0$ and $\beta^1 \in \{0, 0.25, 0.5, 0.75, 1\}$. It displays high sensitivity depending on its initial conditions, which are the basic features of chaos. The new inertia weight factor (W_{CPSO}) is calculated by multiplying the (W_{PSO}) in equation (15) and logistic map in equation (16) to form equation (18) as follows.

$$W_{CPSO} = W_{PSO} \beta^{k+1} \quad (17)$$

To enhance the behavior of the Simple PSO, this study presented a new velocity update by blending a logistic map equation (β) with inertia weight factor (W_{PSO}). Finally, by blending equation (17) with equation (12), the following velocity changed the equation for the proposed CPSO algorithm, which can be expressed as follows:

$$V_i^{k+1} = W_{CPSO} \cdot V_i^k + C_1 R_1 (P_{best(i)}^k - X_i^k) + C_2 R_2 (G_{best(i)}^k - X_i^k) \quad (18)$$

In the CPSO algorithm, W_{CPSO} decreases and oscillates simultaneously from (0.9 to 0.4) for total iteration but decreases linearly in Simple PSO. Fig. 1 shows a flowchart of the CPSO.

4. Results and Discussion

A standard IEEE Node-14 was utilized as a test system to evaluate the efficiency and consistency of the CPSO algorithm and discover the optimal solution for the RPO problem. The CPSO algorithm will be tested on this system to demonstrate the quality and flexibility. The Simple PSO and CPSO algorithms were developed and simulated in MATLAB, with the number of maximum iterations in this study being 200.

4.1. IEEE 14-Node System

This system involves 20 branches, 5 generators, 1 reactive power VAR source compensation (capacitor banks), and 3 transformers; bus, line, generator data, the bounds of reactive power

(Q_G) for generators and other operating data were tabulated in reference [28]. Table 1 shows constraints of independent variables while constraints of reactive power (Q_G) in MVAR for generators are illustrated in Table 2 [28].

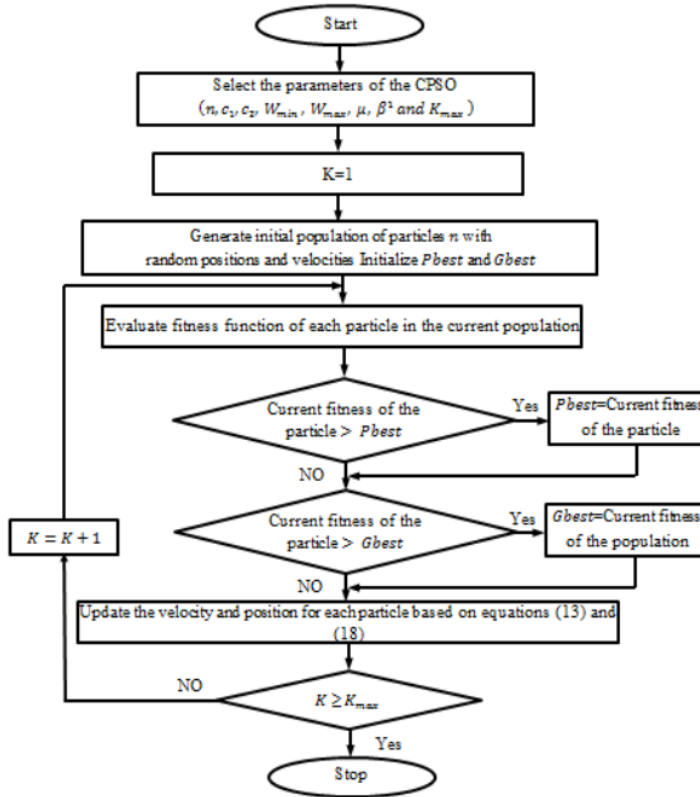


Fig. 1. Flowchart of the CPSO algorithm based on RPO problem.

Table 1. Independent variables constraints for IEEE Node-14 system.

Power System Type	Independent Variables	Min	Max
14 Bus	Generator Voltage (V_G)	0.95	1.1
	Transformer Tap (Tap)	0.9	1.1
	VAR Source Compensation (Q_C)	0	0.20

Table 2. Constraints of reactive power generation for IEEE Node-14 system [28].

Power System Type	Generator Nodes	Q_{Min}	Q_{Max}
14 Bus	1	0	10
	2	-40	50
	3	0	40
	6	-6	24
	8	-6	24

This system has 9 dimensions search space that need to be optimized, including 5 generator voltages (V_G), three transformer taps setting (Tap) and 1 reactive power injected from capacitor bank (Q_C) as listed in Table 3. Simulation results of standard IEEE-14 node system were tested

through a series of comparisons among Simple PSO and CPSO with other optimization methods such as (EP and SARGA) [29], which are tabulated in Table 2. This table proves that the CPSO algorithm had achieved the best results in minimizing loss among all competitors. Fig. 2 compares the percentage reduction power loss for various algorithms. From Fig. 2, it is clear that the reduction in P_{loss} are 9.5% at CPSO, 8.8% at PSO, 1.5% at EP, and 2.5% at SARGA algorithms. Fig. 3 and Fig. 4 show the convergence in terms of power loss versus 200 iterations for the IEEE Node–14 system; these figures indicate that the convergence characteristic of CPSO was the best and most effective in terms of minimizing loss and reaching an optimal solution in fewer iterations than Simple PSO. The chaotic theory helps the system avoid the premature convergence problem and demonstrates that the system was not trapped into the local optima. Fig. 5 presents the voltage profile for this system before and after Simple PSO and CPSO algorithms. From Fig. 5, it is clear that the average voltage at initial is about 1.048, at Simple PSO is about 1.059 and at CPSO is about 1.082.

8
Table 3. Simulation results of IEEE Node–14 system.

Control Variables	Base Case	CPSO	PSO	EP [29]	SARGA [29]
V_{G-1}	1.060	1.100	1.100	NR*	NR*
V_{G-2}	1.045	1.088	1.086	1.029	1.060
V_{G-3}	1.010	1.058	1.057	1.016	1.036
V_{G-6}	1.070	1.096	1.067	1.097	1.099
V_{G-8}	1.090	1.100	1.061	1.053	1.078
Tap ₄₋₇	0.978	0.976	1.019	1.04	0.95
Tap ₄₋₉	0.969	0.975	0.989	0.94	0.95
Tap ₅₋₆	0.932	1.019	1.008	1.03	0.96
Q_{C-9}	0.19	0.186	0.184	0.18	0.06
Reduction in P_L (%)	0	9.5	8.8	1.5	2.5
Total P_L (Mw)	13.550	12.253	12.355	13.34620	13.21643

NR* means not reported.

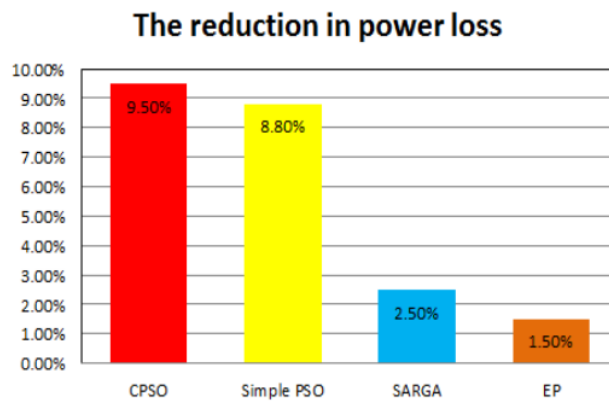


Fig. 2. Comparison of the percentage reduction power loss for various algorithms.

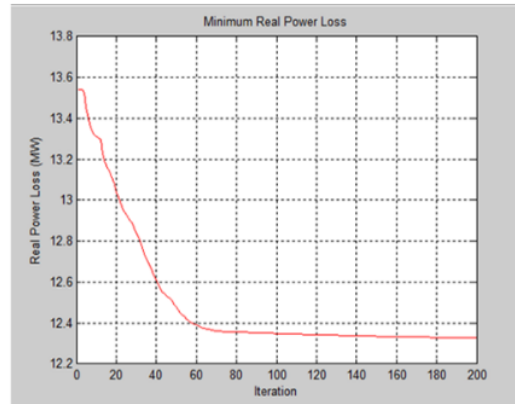


Fig. 3. Convergence for IEEE Node-14 power system with Simple PSO algorithm.

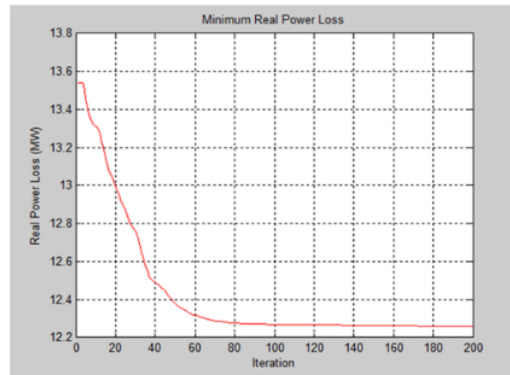


Fig. 4. Convergence for IEEE Node-14 power system with CPSO algorithm.

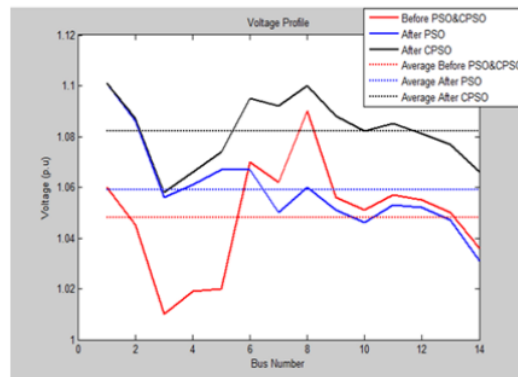


Fig. 5. Voltage profile for IEEE Node-14 power system.

5. Conclusion

In this study, to enhance the performance and quality while avoiding the premature convergence of the Simple PSO algorithm, CPSO algorithm was utilized as an optimization tool to solve RPO problems. The main goal of the objective function is to decrease power loss (P_{loss}),

enhancing the voltage profile of the power system through a proper alteration of the reactive power devices (i.e., control variables). The CPSO algorithm was tested on the IEEE Node-14 system. The simulation implications prove that the CPSO algorithm is the best in terms of convergence characteristics, obtaining optimal values of reactive power devices (i.e., control variables) while decreasing the P_{loss} as well as improving the voltage profile of the system. Furthermore, the reduction in P_{loss} achieved by CPSO algorithm is the biggest than the reduction in P_{loss} obtained by the Simple PSO and other techniques in literature. In addition, the simulation implications demonstrate the efficiency and potential of the CPSO algorithm for solving the RPO problem. The CPSO algorithm had the best results with faster calculation time than the Simple PSO for solving RPO and other complex problems in power systems. Furthermore, the minimum power loss obtained by the CPSO algorithm can attain considerable economic benefits and secure power system operations. So, the CPSO algorithm has been recorded as one of the candidate algorithms with great interest from the authors due to versatility, capability, and achievement in solving complex and multi-variable problems such as RPO.

Author Contribution: All authors contributed equally to the main contributor to this paper. All authors read and approved the final paper.

Funding: This research received no external funding.

Conflicts of Interest: The authors declare no conflict of interest.

References

- [1] L. Kanagasabai, "FCC algorithm for power loss diminution" Journal of Engineering, vol. 8, no. 1, 2021. [https://doi.org/10.21272/jes.2021.8\(1\).e5](https://doi.org/10.21272/jes.2021.8(1).e5)
- [2] R. R. Shoults and D. T. Sun, "Optimal Power Flow Based Upon P-Q Decomposition," IEEE Transactions on Power Apparatus and Systems, vol. PAS-101, no. 2, pp. 397-405, Feb. 1982. <https://doi.org/10.1109/TPAS.1982.317120>
- [3] K. C. Mamandur and R. Chenoweth, "Optimal Control of Reactive Power flow for Improvements in Voltage Profiles and for Real Power Loss Minimization," IEEE Transactions on Power Apparatus and Systems, vol. PAS-100, no. 7, pp. 3185-3194, Jul. 1981. <https://doi.org/10.1109/TPAS.1981.316646>
- [4] H. Habibollahzadeh, G.-X. Luo, and A. Semlyen, "Hydrothermal optimal power flow based on a combined linear and nonlinear programming methodology," IEEE Transactions on Power Systems, vol. 4, no. 2, pp. 530-537, May 1989. <https://doi.org/10.1109/59.193826>
- [5] K. Aoki, A. Nishikori, and R. Yokoyama, "Constrained Load Flow Using Recursive Quadratic Programming," IEEE Transactions on Power Systems, vol. 2, no. 1, pp. 8-16, 1987. <https://doi.org/10.1109/TPWRS.1987.4335064>
- [6] Xihui Yan and V. H. Quintana, "Improving an interior-point-based OPF by dynamic adjustments of step sizes and tolerances," IEEE Transactions on Power Systems, vol. 14, no. 2, pp. 709-717, May 1999. <https://doi.org/10.1109/59.761902>
- [7] J. A. Momoh and J. Z. Zhu, "Improved interior point method for OPF problems," IEEE Transactions on Power Systems, vol. 14, no. 3, pp. 1114-1120, 1999. <https://doi.org/10.1109/59.780938>
- [8] D. Sun, B. Ashley, B. Brewer, A. Hughes, and W. Tinney, "Optimal Power Flow By Newton Approach," IEEE Transactions on Power Apparatus and Systems, vol. PAS-103, no. 10, pp. 2864-2880, Oct. 1984. <https://doi.org/10.1109/TPAS.1984.318284>
- [9] L. L. Lai, J. T. Ma, R. Yokoyama, and M. Zhao, "Improved genetic algorithms for optimal power flow under both normal and contingent operation states," International Journal of Electrical Power &

- Energy Systems, vol. 19, no. 5, pp. 287–292, Jun. 1997. [https://doi.org/10.1016/S0142-0615\(96\)00051-8](https://doi.org/10.1016/S0142-0615(96)00051-8)
- [10] S. Granville, "Optimal reactive dispatch through interior point methods," IEEE Transactions on Power Systems, vol. 9, no. 1, pp. 136–146, 1994. <https://doi.org/10.1109/59.317548>
- [11] R. Hooshmand and M. Joorabian, "Application of artificial neural networks in controlling voltage and reactive power," Scientia Iranica, vol. 12, no. 1, pp. 99–108, 2005. <https://www.sid.ir/en/journal/ViewPaper.aspx?ID=86506>
- [12] D. Pudjianto, S. Ahmed, and G. Strbac, "Allocation of VAR support using LP and NLP based optimal power flows," IEE Proc. Gen. Trans. Dist., vol. 149, no. 4, pp. 377–383, 2002. <https://doi.org/10.1049/ip-gtd:20020200>
- [13] D. C. Yu, J. E. Fagan, B. Foote, and A. A. Aly, "An optimal load flow study by the generalized reduced gradient approach," Electric Power Systems Research, vol. 10, no. 1, pp. 47–53, Jan. 1986. [https://doi.org/10.1016/0378-7796\(86\)90048-9](https://doi.org/10.1016/0378-7796(86)90048-9)
- [14] K. L. Lo and S. P. Zhu, "A decoupled quadratic programming approach for optimal power dispatch," Electric Power Systems Research, vol. 22, no. 1, pp. 47–60, Sep. 1991. [https://doi.org/10.1016/0378-7796\(91\)90079-3](https://doi.org/10.1016/0378-7796(91)90079-3)
- [15] F.C. Lu, Y.Y. Hsu, Reactive power/voltage control in a distribution substation using dynamic programming, IEE Proc. Gen. Trans. Distrib., vol. 142, pp. 639–645, 1995. <https://doi.org/10.1049/ip-gtd:19952210>
- [16] K. Iba, "Reactive power optimization by genetic algorithm," IEEE Transactions on Power Systems, vol. 9, no. 2, pp. 685–692, May 1994. <https://doi.org/10.1109/59.317674>
- [17] W. Yan, F. Liu, C. Y. Chung, and K. P. Wong, "A Hybrid Genetic Algorithm–Interior Point Method for Optimal Reactive Power Flow," IEEE Transactions on Power Systems, vol. 21, no. 3, pp. 1163–1169, Aug. 2006. <https://doi.org/10.1109/TPWRS.2006.879262>
- [18] K. H. Adbul-Rahman and S. M. Shahidehpour, "Optimal reactive power dispatch with fuzzy variables," 1993 IEEE International Symposium on Circuits and Systems. <https://doi.org/10.1109/ISCAS.1993.394193>
- [19] R. Ng Shin Mei, M. H. Sulaiman, Z. Mustafa, and H. Daniyal, "Optimal reactive power dispatch solution by loss minimization using moth-flame optimization technique," Applied Soft Computing, vol. 59, pp. 210–222, Oct. 2017. <https://doi.org/10.1016/j.asoc.2017.05.057>
- [20] H. Yoshida, K. Kawata, Y. Fukuyama, S. Takayama, and Y. Nakanishi, "A particle swarm optimization for reactive power and voltage control considering voltage security assessment," IEEE Transactions on Power Systems, vol. 15, no. 4, pp. 1232–1239, 2000. <https://doi.org/10.1109/59.898095>
- [21] Mojtaba Ghasemi, Sahand Ghavidel, Mohammad Mehdi Ghanbarian, Amir Habibi, "A new hybrid algorithm for optimal reactive power dispatch problem with discrete and continuous control variables," Applied Soft Computing, Vol. 22, PP. 126–140, 2014. <https://doi.org/10.1016/j.asoc.2014.05.006>
- [22] O. M. Neda, "A new hybrid algorithm for solving distribution network reconfiguration under different load conditions," Indonesian Journal of Electrical Engineering and Computer Science, vol. 20, no. 3, pp. 1118–1127, 2020. <https://doi.org/10.11591/ijeecs.v20.i3.pp1118-1127>
- [23] O. M. Neda, "Optimal coordinated design of PSS and UPFC-POD using DEO algorithm to enhance damping performance," International Journal of Electrical and Computer Engineering (IJECE), vol. 10, no. 6, pp. 6111–6121, 2020. <https://doi.org/10.11591/ijece.v10i6.pp6111-6121>
- [24] A. N. Hussain, A. A. Abdullah and O. M. Neda, "Modified particle swarm optimization for solution of reactive power dispatch," Research Journal of Applied Sciences, Engineering and Technology, vol. 15, no. 8, pp. 316–327, 2018. <https://doi.org/10.19026/rjaset.15.5917>

- [25] A. Rajan and T. Malakar, "Optimal reactive power dispatch using hybrid Nelder–Mead simplex based firefly algorithm," *International Journal of Electrical Power & Energy Systems*, vol. 66, pp. 9–24, Mar. 2015. <https://doi.org/10.1016/j.ijepes.2014.10.041>
- [26] T. Kennedy and R. Eberhart, "Particle swarm optimization," In *Proc. Of the IEEE international conference on Neural networks*, 1995, pp. 1942-1948. <https://doi.org/10.1109/ICNN.1995.488968>
- [27] M. Damdar and V. C. Veera Reddy, "Capacitor Placement Using Fuzzy And Particle Swarm Optimization Method For Maximum Annual Savings," *ARNP Journal of Engineering and Applied Sciences*, vol. 3, no. 3, pp. 25–30, June 2008. <https://citeseerx.ist.psu.edu/viewdoc/download?doi=10.1.1.510.6282&rep=rep1&type=pdf>
- [28] R. C. Eberhart and Y. Shi, "Comparing inertia weights and constriction factors in particle swarm optimization", In *Proceedings of the 2000 Congress on Evolutionary Computation*, (CEC00), July 16-19, 2000, pp. 84–88. <https://doi.org/10.1109/CEC.2000.870279>
- [29] A. N. Hussaina, F. Malek, M. A. Rashid, L. Mohamed, and N. A. Mohd Affendi, "Optimal Coordinated Design of Multiple Damping Controllers Based on PSS and UPFC Device to Improve Dynamic Stability in the Power System," *Mathematical Problems in Engineering*, vol. 2013, pp. 1–16, Feb 2013. <https://doi.org/10.1155/2013/965282>

Chaotic Particle Swarm Optimization for Solving Reactive Power Optimization Problem

ORIGINALITY REPORT

24%

SIMILARITY INDEX

16%

INTERNET SOURCES

18%

PUBLICATIONS

7%

STUDENT PAPERS

PRIMARY SOURCES

1	www.researchgate.net Internet Source	4%
2	beei.org Internet Source	3%
3	Lenin Kanagasabai. "Diminution of real power loss by novel Galápagos Penguin Algorithm", Heliyon, 2019 Publication	2%
4	Erliana Samsuria, Yahaya M. Sam, Fazilah Hassan. "Enhanced Sliding Mode Control for a Nonlinear Active Suspension Full Car Model", International Journal of Robotics and Control Systems, 2021 Publication	1%
5	Submitted to Amrita Vishwa Vidyapeetham Student Paper	1%
6	Submitted to University of Babylon Student Paper	1%
7	www.cs.uoi.gr	

Internet Source

1 %

8

Lenin Kanagasabai. "Advanced Teaching-Learning-Based Optimization Algorithm for Actual Power Loss Reduction", IAES International Journal of Robotics and Automation (IJRA), 2019

Publication

1 %

9

Ibnu Rifajar, Abdul Fadlil. "The Path Direction Control System for Lanange Jagad Dance Robot Using the MPU6050 Gyroscope Sensor", International Journal of Robotics and Control Systems, 2021

Publication

1 %

10

labplan.ufsc.br

Internet Source

1 %

11

Submitted to University of Technology

Student Paper

1 %

12

core.ac.uk

Internet Source

<1 %

13

ijeecs.iaescore.com

Internet Source

<1 %

14

Submitted to Universiti Kebangsaan Malaysia

Student Paper

<1 %

15

Ashadi Setiawan, Alfian Ma'arif. "Stirring System Design for Automatic Coffee Maker

<1 %

Using OMRON PLC and PID Control",
International Journal of Robotics and Control
Systems, 2021

Publication

16

Ghasemi, Mojtaba, Sahand Ghavidel, Mohsen Gitizadeh, and Ebrahim Akbari. "An improved teaching-learning-based optimization algorithm using Lévy mutation strategy for non-smooth optimal power flow", International Journal of Electrical Power & Energy Systems, 2015.

Publication

17

Sylvere Mugemanyi, Zhaoyang Qu, Francois Xavier Rugema, Yunchang Dong, Christophe Bananeza, Lei Wang. "Optimal Reactive Power Dispatch Using Chaotic Bat Algorithm", IEEE Access, 2020

Publication

18

Zhao, Wen Qing, Li Wei Wang, Fei Fei Han, and De Wen Wang. "Reactive Power Optimization in Power System Based on Adaptive Particle Swarm Optimization", Advanced Materials Research, 2013.

Publication

19

maxwellsci.com

Internet Source

20

theijes.com

Internet Source

<1 %

<1 %

<1 %

<1 %

<1 %

21 Ghasemi, Mojtaba, Sahand Ghavidel, Jamshid Aghaei, Mohsen Gitizadeh, and Hasan Falah. "Application of chaos-based chaotic invasive weed optimization techniques for environmental OPF problems in the power system", Chaos Solitons & Fractals, 2014. $<1\%$

Publication

22 M. A. Abido. "Chapter 11 Multiobjective Particle Swarm Optimization for Optimal Power Flow Problem", Springer Science and Business Media LLC, 2011. $<1\%$

Publication

23 Omar Muhammed Neda. "Optimal coordinated design of PSS and UPFC-POD using DEO algorithm to enhance damping performance", International Journal of Electrical and Computer Engineering (IJECE), 2020. $<1\%$

Publication

24 www.hindawi.com $<1\%$

Internet Source

25 "Optimization in the Energy Industry", Springer Science and Business Media LLC, 2009. $<1\%$

Publication

26 B. Zhao, C.X. Guo, Y.J. Cao. "An improved particle swarm optimization algorithm for $<1\%$

optimal reactive power dispatch", IEEE Power Engineering Society General Meeting, 2005, 2005

Publication

27

downloads.hindawi.com

Internet Source

<1 %

28

dr.ntu.edu.sg

Internet Source

<1 %

29

journals.tubitak.gov.tr

Internet Source

<1 %

30

text.123doc.org

Internet Source

<1 %

31

Soliman Abdel-Hady Soliman, Abdel-Aal Hassan Mantawy. "Chapter 5 Optimal Power Flow", Springer Science and Business Media LLC, 2012

Publication

<1 %

32

Subbaraj, P.. "Optimal reactive power dispatch using self-adaptive real coded genetic algorithm", Electric Power Systems Research, 200902

Publication

<1 %

33

d.lib.msu.edu

Internet Source

<1 %

34

ijera.com

Internet Source

<1 %

35

www.albadronline.com

Internet Source

<1 %

36

www.granthaalayahpublication.org

Internet Source

<1 %

37

Eka Widya Suseno, Alfian Ma'arif. "Tuning of PID Controller Parameters with Genetic Algorithm Method on DC Motor", International Journal of Robotics and Control Systems, 2021

Publication

<1 %

38

Fadhel A. Jumaa, Omar Muhammed Neda, Mustafa A. Mhawesh. "Optimal distributed generation placement using artificial intelligence for improving active radial distribution system", Bulletin of Electrical Engineering and Informatics, 2021

Publication

<1 %

39

scholarworks.lib.csusb.edu

Internet Source

<1 %

40

Liling Sun, Jingtao Hu, Hanning Chen. "Artificial Bee Colony Algorithm Based on - Means Clustering for Multiobjective Optimal Power Flow Problem ", Mathematical Problems in Engineering, 2015

Publication

<1 %

Exclude quotes On

Exclude matches Off

Exclude bibliography On