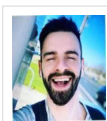


Lingua et Cultura Review

[HOME](#) / Editorial Team

Editorial Team

Editor-in-Chief



Prof. Alexander V. Obskov

Scopus ID: [56381555300](#)

Email: editor@lingcure.org

[E21STG0MX9A](#)

American Accent Program, International e-Learning Project, Austin, TX, USA

Review Editor



Prof. Ahd Hassan

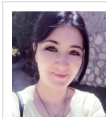
Scopus ID: [57212417756](#)

Email: ahdihassan441@gmail.com

<https://orcid.org/0000-0003-1734-3168>

Plcorporora, Islamabad, Pakistan

Co-Editor



N. R. Ismatullayeva, Ph.D.

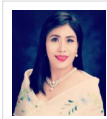
Scopus ID: [57211396313](#)

Email: ismatullayeva.nargiza@gmail.com

<https://orcid.org/0000-0001-8306-5376>

Department of Translation Studies, Tashkent, Uzbekistan

Co-Editor



Prof. Alma Bangayan-Manera

Scopus ID: [57209748644](#)

Email: almamanera05@gmail.com

<https://orcid.org/0000-0003-0698-2845>

Cagayan State University, Philippines

International Advisory Board

[A. Fitzgerald](#), University of Southern Queensland, Toowoomba, Australia

[A. Pakštas](#), Vilniaus Universitetas, Vilnius, Lithuania

[A. Bernardo](#), De La Salle University-Manila, Manila, Philippines

[A. Kagwesage](#), University of Rwanda, Butare, Rwanda

[C. Huang](#), Harvard University, Cambridge, United States

[H. Cohen](#), Université du Québec à Montréal, Montreal, Canada

[H. Kamp](#), Universiteit van Amsterdam, Amsterdam, Netherlands

[H. Wansing](#), Ruhr-Universität Bochum, Bochum, Germany

[I. Lee](#), Chinese University of Hong Kong, Shatin, Hong Kong

[J. Symons](#), University of Kansas, Lawrence, Lawrence, United States
[J. Linhares](#), Universidade de Coimbra, Faculdade de Direito, Coimbra, Portugal
[J. Sichman](#), Universidade de Sao Paulo-USP, Sao Paulo, Brazil
[K. Gafuska](#), Université de Silésie, Poland
[K. Kaimbo](#), Universite de Kinshasa, Kinshasa, Democratic Republic Congo
[M. Dhakal](#), Ministry of Forests and Environment, Kathmandu, Nepal
[M. Makki](#), UNSW Sydney, Sydney, Australia
[M. Winikoff](#), Victoria University of Wellington, Wellington, New Zealand
[M. Hamilton](#), The University of the West Indies, Kingston, Jamaica
[M. Cresswell](#), Victoria University of Wellington, Wellington, New Zealand
[M. Rivera](#), Tecnológico de Costa Rica, Cartago, Cartago, Costa Rica
[N. Kubota](#), Tokyo Metropolitan University, Hachioji, Japan
[O. Fagbadebo](#), Durban University of Technology, South Africa/Nigeria
[P. Häkkinen](#), University of Jyväskylä, Jyväskylä, Finland
[R. Boffi](#), Min. Salud y Accion Social la Nacion, Buenos Aires, Argentina
[S. Hidri](#), Faculty of Human and Social Sciences of Tunis, Tunis, Tunisia
[S. Veigh](#), University of Melbourne, Parkville, Australia
[S. Motsa](#), University of Eswatini, Mbabane, Swaziland
[T. Barbakadze](#), Iliia State University (ISU), Tbilisi, Georgia
[V. Kuntsevich](#), Space Research Institute, Kiev, Ukraine
[Z. Birkbeck](#), University of London, London, United Kingdom

International Section Editors Board

Africa

Anthropological linguistics

[A. Cain](#), Development Workshop, Luanda, Angola
[A. Kabel](#), Al Akhawayn University, Ifrane, Morocco

Corpus linguistics

[B. Ekanjume-Ilongo](#), National University of Lesotho, Roma, Lesotho
[B. Yimam](#), Addis Ababa University, Addis Ababa, Ethiopia

Systemic Functional Linguistics

[D. Kasule](#), University of Botswana, Gaborone, Botswana

Computational and mathematical linguistics

[J. Kigera](#), University of Nairobi, Nairobi, Kenya

Language variation and change

[M. Dossa](#), Université de Yaoundé I, Yaounde, Cameroon
[M. Rieker](#), American University in Cairo, Cairo, Egypt
[P. Omonzejele](#), University of Benin, Benin, Nigeria

Australia

Sign linguistics

[M. Haugh](#), The University of Queensland, Brisbane, Australia

Syntax, semantics, pragmatics (Role Reference Grammar)

[M. Cresswell](#), Victoria University of Wellington, Wellington, New Zealand
[M. Gamal](#), Australian Federal Government, Australia

Documentary linguistics

[P. Stuckey](#), Monash University, Melbourne, Australia
[T. McNamara](#), University of Melbourne, Parkville, Australia

Asia

First language acquisition and second language acquisition

[B. Raikhan](#), Kazakh Ablai Khan University of International Relations and World Languages, Almaty, Kazakhstan
[C. Gamage](#), University of Peradeniya, Kandy, Sri Lanka

Southeast Asian Languages

[C. Chan](#), The University of Hong Kong, Pokfulam, Hong Kong
[D. Takahashi](#), Department of Theoretical Linguistics, Tohoku University, Sendai, Japan
[F. Azimovna](#), Bukhara State University, Bukhara, Uzbekistan

Metaphor studies

[J. Jiang](#), Zhejiang University, Hangzhou, China

[A. Alfahadi](#), King Faisal Specialist Hospital and Research Centre, Riyadh, Saudi Arabia

Discourse analysis

[L. Mo](#), South China Normal University, Guangzhou, China

[R. Mishra](#), University of Hyderabad, Hyderabad, India

Translation Studies

[S. Khoo](#), Universiti Sains Malaysia, Gelugor, Malaysia

[Z. Zhumagulova](#), National Academy of Sciences of the Kyrgyz Republic, Bishkek, Kyrgyzstan

Europe

[A. Weinberger](#), Universität des Saarlandes, Saarbrücken, Germany

[D. Gilbert](#), Brunel University London, Uxbridge, United Kingdom

Historical linguistics

[E. Kavakli](#), University of the Aegean, Mytilene, Greece

Syntax-semantics interface

[F. Huettig](#), Max Planck Institute for Psycholinguistics, Nijmegen, Netherlands

[I. Kalpokas](#), LCC International University, Lithuania

Pragmatics

[L. N?drag](#), Ovidius University of Constanta, Constanta, Romania

[L. Pérez-Rodríguez](#), Universidad de Castilla-La Mancha, Ciudad Real, Spain

[M. Vulchanova](#), Norges Teknisk-Naturvitenskapelige Universitet, Trondheim, Norway

Syntax, semantics, pragmatics (Functional Discourse Grammar)

[M. Schmid](#), University of Essex, Colchester, United Kingdom

[N. Naran?i?](#), Institute for Anthropological Research, Zagreb, Croatia

Language policy

[P. Blackburn](#), Roskilde University, Roskilde, Denmark

Phonetics and phonology

[R. Frumkina](#), Institute of Linguistics of the Russian Academy of Sciences, Moscow, Russian Federation

North America

North American Languages

[A. Winters](#), Yavapai College, Prescott, United States

Ethnolinguistics

[C. Lutz](#), Centro de Investigaciones Regionales de Mesoamérica, Guatemala

[D. Koike](#), The University of Texas at Austin, Austin, United States

Sociolinguistics

[E. Agazzi](#), Universidad Panamericana, Ciudad de Mexico, Mexico

Linguistic typology

[J. Etchemendy](#), Stanford University, Palo Alto, United States

[K. Koda](#), Carnegie Mellon University, Pittsburgh, United States

[L. Montero](#), Universidad de La Habana, Havana, Cuba

Syntax (generative frameworks)

[M. Scardamalia](#), University of Toronto, Toronto, Canada

[R. Salvador](#), ITCA-FEPADE, San Salvador, El Salvador

South America

Multilingualism

[C. Curvale](#), FLACSO Ecuador, Quito, Ecuador

[M. Maia](#), Federal University of Rio de Janeiro, Rio de Janeiro, Brazil

Production Editor

productioneditor@lingcure.org

[R. Goldblatt](#), Victoria University of Wellington, Wellington, New Zealand

Language Editor

[C. Conlan](#), Curtin University, Perth, Australia

[M. Ashby](#), University of Tasmania, Hobart, Australia

Editorial Office

secretariat@lingcure.org

[V. Vucic](#), Secretariat of Linguistics and Culture Review

All members of the Editorial Board have identified their affiliated institutions or organizations, along with the corresponding country or geographic region. American Linguist Association remains neutral with regard to any jurisdictional claims.

MAKE A SUBMISSION

ISSN



ISSN 2690-103X (online)



Find It!  The Library of Congress

TWEETS BY @LINGCUREJOURNAL

LingCuRe Retweeted

Library of Congress 

@librarycongress · Dec 27, 2019



Blog post from the past: "King Winter," a book to ring in the chilly season.
blogs.loc.gov/loc/2015/12/ra...

KEYWORDS



CURRENT ISSUE

RTOM 1.0

RSS 2.0

RSS 1.0

INFORMATION

For Readers

For Authors

PUBLISHED BY

ALA

American Linguist Association

Published by

American Linguist Association
ISSN 2690-103X (online)
Linguistics and Culture Review

Contact us

One Rockefeller Plaza 9th Floor,
New York, NY 10020, United States
Email: secretariat@lingcure.org

Powered by

Basic Theme
Public Knowledge Project
Open Journal Systems
