

# Car Brake Work Indicator Tool

*by* Politeknik Dharma Patria

---

**Submission date:** 16-Jun-2021 11:58AM (UTC+0900)

**Submission ID:** 1502231144

**File name:** 559-Article\_Text-2412-1-15-20210605.docx (1.03M)

**Word count:** 2891

**Character count:** 14517

## Car Brake Work Indicator Tool

Bambang Sudarsono<sup>1</sup>, Hamid Nasrullah<sup>2</sup>, Fanani Arif Ghozali<sup>3</sup>, Aji Apri Setiawan<sup>4</sup>

<sup>1,4</sup>Pendidikan Vokasional Teknologi Otomotif, Universitas Ahmad Dahlan, Yogyakarta, 55166

<sup>2</sup>Mesin Otomotif, Politeknik Dharma Patria, Kebumen, Indonesia, 54311

<sup>3</sup>Pendidikan Vokasional Teknik Elektronika, Universitas Ahmad Dahlan, Yogyakarta, 55166

Email: bambang.sudarsono@pvto.uad.ac.id

### ABSTRAK

Kecelakaan yang disebabkan oleh rusaknya fungsi sistem lampu rem semakin meningkat sejalan dengan meningkatnya fasilitas jalan yang memberikan ruang kepada pengemudi mengendarai kendaraan dengan cepat. Untuk mengatasi permasalahan tersebut diperlukan sistem yang mampu memberikan sinyal kepada pengemudi agar cepat mengidentifikasi kerusakan lampu rem. Tujuan penelitian ini untuk menghasilkan alat bantu indikator kerja rem mobil. Alat bantu ini merupakan suatu perangkat elektronik yang berfungsi mengidentifikasi lampu rem apabila salah satu lampu rem mati dengan cara memberikan sinyal di *dashboard* mobil secara otomatis. Metode yang digunakan untuk menghasilkan alat bantu indikator kerja rem terdiri dari perancangan, pembuatan dan pengujian. Proses pengujian telah dilakukan melalui *lux meter* dan variable pengujiannya meliputi pengujian pemakaian arus listrik, tegangan saat alat bekerja, serta pengujian kinerja alat pada mobil. Dari pengujian alat ini, diperoleh hasil pemakaian arus saat alat bekerja yaitu sebelum induksi bekerja sebesar 2 ampere dan saat induksi bekerja sebesar 0,5 ampere. Adapun besar tegangan saat alat terpakai sebesar 11,8 volt. Berdasarkan percobaan yang telah dilakukan tidak terdapat gangguan pada sistem penerangan maupun sistem yang lain pada mobil ketika alat ini bekerja. Alat ini mampu bekerja dengan baik sehingga memberikan kemudahan dan juga kenyamanan tersendiri pada saat berkendara dengan mobil.

**Kata kunci:** Alat Bantu; Indikator; Kerja Rem Mobil

### ABSTRACT

Accidents caused by malfunctioning of the brake light system are increasing in line with the increase in road facilities that provide space for drivers to drive vehicles quickly. To overcome this problem, a system that is able to provide a signal to the driver is needed to quickly identify the damage to the brake lights. The purpose of this study was to produce a car brake indicator tool. This tool is an electronic device that functions to identify the brake light when one of the brake lights is off by automatically giving a signal on the dashboard of the car. The method used to produce brake work indicator tools consists of designing, manufacturing and testing. The testing process has been carried out through a lux meter and the test variables include testing the use of electric current, voltage when the tool is working, as well as testing the performance of the tool on the car. From testing this tool, the results obtained when the current usage of the tool is working, namely before the induction works of 2 amperes and when the induction works it is 0.5 amperes. The magnitude of the voltage when the tool is used is 11.8 volts. Based on the experiments that have been carried out there are no disturbances in the lighting system or other systems on the car when this tool is working. This tool is able to work well so as to provide convenience and comfort when driving by car. Based on the experiments that have been carried out there are no

disturbances in the lighting system or other systems on the car when this tool is working. This tool is able to work well so as to provide convenience and comfort when driving by car. Based on the experiments that have been carried out there are no disturbances in the lighting system or other systems on the car when this tool is working. This tool is able to work well so as to provide convenience and comfort when driving by car.

**Key words:** Tools; Indicators; Car Brake Work

## 1. Preliminary

The development of increasingly advanced automotive technology demands technological developments to support driving safety[1][2][3]. Driving safety is very important, especially when it is associated with drivers who drive their vehicles quickly and the number of vehicles on the road is dense. Vehicles that are driven at high speed, will be at high risk of accidents[4][5]. This is caused because one of the cars braking suddenly and the possibility of collisions up to 3, 4, 5, and so on. To prevent a high risk of accidents from occurring, optimal brake light work is required[6].

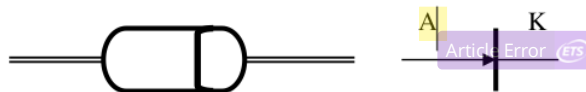
Brake lights are useful when the vehicle is braking suddenly. The brake light gives a signal to the driver of the car so that it is easy and fast to see the condition of the car in front of him. However, the incident in the field proves that the performance of the brake lights is not fully considered properly. The results of observations and interviews with several car repair shops, concluded that the performance of brake lights is rarely noticed[7]. Lights that are off, or lights that are on unstable are the main problems with brake lights and most drivers don't know and are left alone[8]. From the above review, a simple and efficient tool is needed that functions to monitor the work of the brake light easily, safely and does not interfere with driving comfort[9][10][11].

## 2. Method

### A. Tool Design

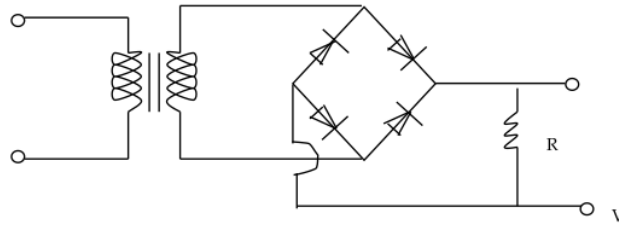
#### 1. Current rectifier

Current rectifiers are usually used with semiconductor diodes or diodes.



Picture. 1 Semiconductor Diode Symbol

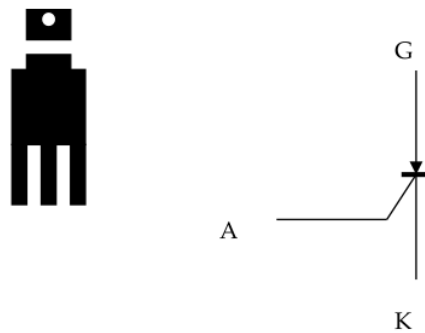
The brake work indicator tool uses four diodes so that the resulting current is quickly channeled to other circuits. As shown in the image below:



Picture. 2 Full Wave Rectifier

### 2. SCR (Silicon Controlled Resistor)

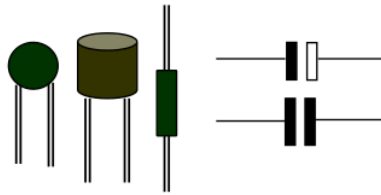
SCR on the auxiliary brake work indicator works like a relay by using a weak electric current. The brake work indicator tool uses an electric magnet to carry out its function. The legs on the SCR are coded A (anode), G (gate), K (cathode). The SCR on the brake work indicator tool functions as an automatic switch to turn on the signal on the dashboard.



Picture. 3 SCR Forms and Their Symbols

### 3. Condenser

A capacitor or often referred to as a capacitor, denoted by the letter C, functions to store an electric charge for a certain period of time without chemical reactions. The use of a condenser on the brake work indicator tool serves to store the induction from the magnetic field so as to produce a current to amplify the signal on the dashboard, which is more sensitive to light.



Picture 4 Types of Condenser

#### 4. Resistor

Resistor is an electrical resistance that serves to limit the electric current flowing. In the manufacture of brake work indicator tools, the use of resistors is used to connect the work of the magnet with the light emitting diode (LED).

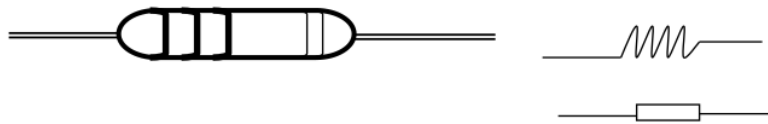


Figure 5 Resistors and Resistance Symbols.

#### 4. Circuit voltage sensor

The sensor used in the brake work indicator tool is a circuit sensor where when one of the brake lights goes out induction occurs then flows to the SCR (silicon controlled resistor) and connects the current and turns on the LED (Light Emitting Diode) as a signal on the dashboard. The nature of the LED (Light Emitting Diode) is that it will emit light, if it gets a long forward voltage, and cannot withstand high voltages of 1.5 – 20 volts.

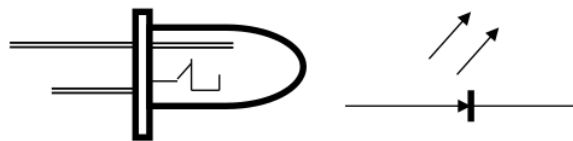


Figure 6. The shape of the LED (Light Emitting Diode) and its symbol.

#### 5. Tools app

The brake work indicator tool that is made is a tool designed to be able to provide convenience in its use, namely being able to monitor brake lights. So far, when the brake light goes out in the middle of the road, the driver cannot see and know. The brake work indicator tool works by making an indicator so that when the brake light does not work, the LED (Light Emitting Diode) light is on.

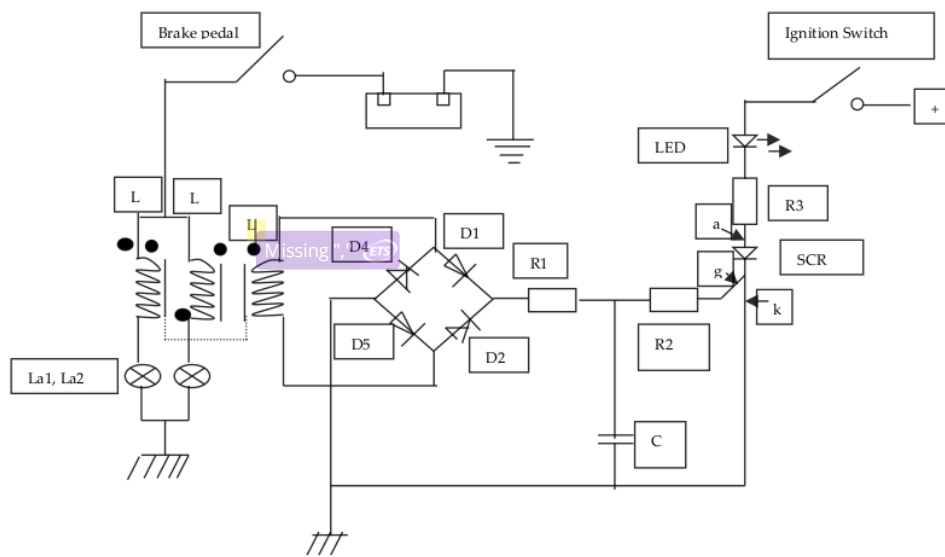


Figure 7. Indicator Circuit One of the Brake Lights Not Working

Component list:

- |                             |   |
|-----------------------------|---|
| a. R1, R2 = 120 ,           | e. 10. SCR = C106 M                       |
| b. R3 = 390 ,               | f. Toroid ferrite with 11 turns           |
| c. D1, D2, D3, D4 = 1N4002, | g. La1, La2 = 25 watts, 12. L3 = 20 turns |
| d. LED = 6 watts,           |   |

### B. How the Tool Works

When the brake light is working properly, the winding L1 and L2 coils conduct the same current so that the magnetic field does not work. When the brake light is not working properly, the magnetic field caused by the current in the lamp by one of the brakes induces a voltage in the L3 coil. SCR (silicon controlled resistor) ON so that it turns on the LED (Light Emitting Diode). To increase the sensitivity of the indicator, R1, C2, R2 are needed which function to increase the sensitivity of the magnetic field.

## 3. Results and Discussion

### 3.1. Testing Tool

- a. Testing the ignition of the brake light through the circuit

Tests and observations using a lux meter can be seen in table 1.

Table. 1 Observation Method

No.	Measurement Type	Measurement results	Conclusion
1.	Turn on the light with the brake light indicator circuit	105 Lux (night) 255 Lux (day)	Standard 150 Lux
2.	Light on without a circuit (directly from the battery)	140 Lux (night) 290 Lux (day)	

From the results of the tests and observations above, it can be concluded that the results of the brake lights with a circuit and without a circuit (direct battery) are not nearly the same, which is around 150 Lux. This indicates that when the brake light is on, it does not significantly affect other drivers.

b. Testing the installation of the tool on the car

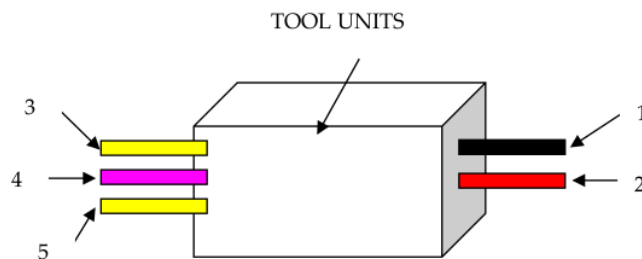


Figure 8. The color of the cable to be installed on the car

Information :

1. black cable = negative battery
2. red wire = Turn off the LED switch and to the battery positive
3. Yellow wire = Positive brake light
4. Orange wire = brake pedal switch
5. Yellow wire = Positive brake light

c. Tool performance testing

1. The process of installing tools on the car

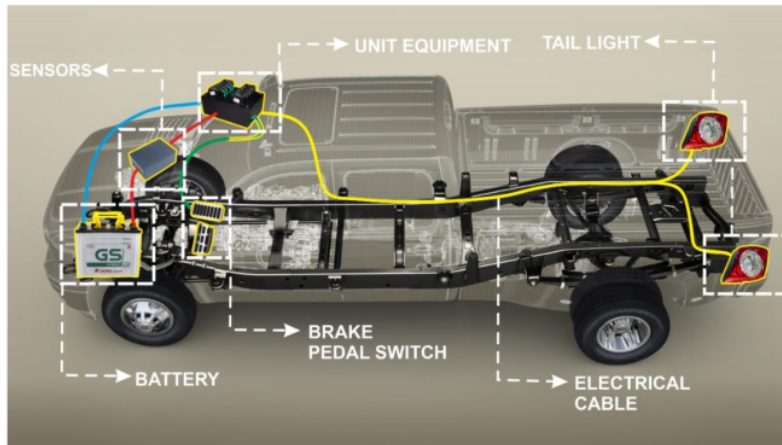


Figure 9. Placement of the Tool on the Car in View from above

The current source of the brake work indicator tool uses a 12 volt battery. In installation, this tool is placed on the dashboard of the car. This makes it easier when connecting cables so that the distance obtained is close and can be reached when connecting cables. In the picture above, the tool unit is placed on the front of the dashboard, and the sensor is placed on the car dashboard. The installation method is as follows:

1. Connect the cable from the appliance unit to the positive wire of the brake light.
  2. Connect the LED lighter wire then to the battery positive.
  3. Connect the pedal switch cable.
  4. Check the cables that have been installed to anticipate the occurrence of errors or short circuits.
2. Performance test:
1. Depress the brake pedal about five times
  2. Then turn off one of the brake lights
  3. See if the signal is on or not, if it is on, it means the tool is working properly.
  4. If the signal is on, it will continue to burn until the LED light is turned off so that the signal light goes out.



Table 2. Measurement and Test Results

Test	Measurement Type	Measurement results	Information
1.	Current use before induction works (before the signal turns on)	2 Ampere	Does not interfere with battery current consumption.
2.	Current consumption when induction is working (signal is on)	0.5 Ampere	Do not use excessive current from the battery so that it does not interfere with the use of electric current from the battery.
3.	Total working voltage when the tool is working.	11.8 volts	The battery voltage is still in good condition because it is close to 12 volts
4.	LED light signal voltage	1, 81 volts	LED lamps are safe because they are less than 3 volts.

### 3.2. Discussion

#### a. Current Usage

Based on the results of the tool testing that has been carried out, the current consumption of the tool before the induction works (before the signal turns on) is measured at 2 amperes, and the current consumption in the tool when the induction is working (when the signal is working) is measured at 0.5 amperes. With the current usage as measured, it can be seen that this brake work indicator tool is quite efficient in using electric current from the battery, so it is hoped that the presence of this tool in the car does not interfere with the work of other systems that also use batteries as a current source, such as horns, lights, turn signal, headlights and others. Weaknesses that occur when adding systems

Several relevant research results support that the auxiliary brake work indicator should pay attention to the driver's safety function. The addition of new electrical functions should not interfere with the performance of other electrical systems[12][13].

#### b. Tool Performance Capability

The brake work indicator tool has been installed and tested on the car. The installation process is easy and can be done yourself so that it is more effective and efficient. Judging from the ability to work, this tool does not show symptoms or problems that interfere with the function of the lighting and other electrical systems in

the car, so in addition to providing comfort in driving, this tool also plays a significant role in driving safety and safety.

The brake work indicator tool is placed in a safe place, one of which is on the front of the car dashboard, with the consideration that this place is closed so that the car still looks neat and protected from water either when it rains or when it is washed. However, it is possible that this tool is installed in other parts of the car while still referring to safety and comfort considerations[14][15].

#### 4. Conclusion

The brake work indicator tool works if in the middle of the trip suddenly the brakes don't work properly. The brake work indicator tool automatically sends a signal to the LED lights on the dashboard. Judging by how it works, this tool also does not interfere with the lighting and electrical functions of the car. So that in addition to providing comfort in driving, this tool is also quite a role in the safety and driving safety factor. The brake work indicator tool works well and is economical with 4 testing processes.

#### 5. Reference

- [1] V. Sima, I. G. Gheorghe, J. Subić, and D. Nancu, "Influences of the industry 4.0 revolution on the human capital development and consumer behavior: A systematic review," *Sustain.*, vol. 12, no. 10, 2020, doi: 10.3390/SU12104035.
- [2] C. Chan, "International Journal of Transportation Advancements , prospects , and impacts of automated driving systems," *Int. J. Transp. Sci. Technol.*, vol. 6, no. 3, pp. 208–216, 2017, doi: 10.1016/j.ijst.2017.07.008.
- [3] B. Sudarsono, "Industrial-based practical learning development for teacher competence of automobile technology Industrial-based practical learning development for teacher competence of automobile technology," *J. Phys. Conf. Ser.*, vol. 144, no. 012062, pp. 1–8, 2020, doi: 10.1088/1742-6596/1446/1/012062.
- [4] A. Virga, M. Gulino, D. Vangi, A. Virga, and M. Gulino, "ScienceDirect Combined activation activation of of braking braking and and steering steering for for automated automated driving driving systems : adaptive intervention by injury criteria systems: adaptive intervention by injury risk-based crite," *Procedia Struct. Integr.*, vol. 24, no. 2019, pp. 423–436, 2020, doi: 10.1016/j.prostr.2020.02.039.
- [5] A. Pinchuk, P. Dadoenkov, A. Pinchuk, P. Dadoenkov, D. Halutin, and I. Korago, "ScienceDirect ScienceDirect ScienceDirect Improved rolling system of railway stock on brake shoe Improved rolling system of railway stock on brake shoe," *Procedia Comput. Sci.*, vol. 149, pp. 258–263, 2019, doi: 10.1016/j.procs.2019.01.132.

- [6] <sup>6</sup> M. Grotoli, F. Celiberti, Y. Lemmens, R. Happee, M. P. Hagenzieker, and J. C. F. De Winter, "Emergency braking at intersections: A motion-base motorcycle simulator study Nat a," *Appl. Ergon. J.*, vol. 82, no. August 2018, 2020, doi: 10.1016/j.apergo.2019.102970.
- [7] <sup>11</sup> J. Rusama, "Developing a car maintenance service concept for business customers - a case study of Veho Autotalot Oy," Laurea University of Applied Sciences, 2012.
- [8] <sup>3</sup> G. Li, W. Wang, S. E. Li, B. Cheng, and P. Green, "Effectiveness of Flashing Brake and Hazard Systems in Avoiding Rear-End Crashes," *Adv. Mech. Eng.*, vol. 2014, p. 12, 2014, doi: 10.1155/2014/792670.
- [9] <sup>5</sup> U. Akadike, S. B. Hassan, F. Asuke, and J. O. Agunsoye, "Development of Asbestos-Free Brake Pad Using Bagasse," *Tribol. Ind.*, vol. 32, no. 1, pp. 12–18, 2010.
- [10] <sup>7</sup> W. Li, X. Yang, S. Wang, J. Xiao, and Q. Hou, "Comprehensive Analysis on the Performance and Material of Automobile Brake Discs," *Metals (Basel)*, vol. 10, no. 377, pp. 1–18, 2020.
- [11] G. Li, "The Design of the Automobile Brake Cooling System," *Open Access Libr. J.*, vol. 5, no. 4567, pp. 1–9, 2018, doi: 10.4236/oalib.1104567.
- [12] <sup>14</sup> <sup>12</sup> O. A. Towoju, "Braking Pattern Impact on Brake Fade in an Automobile Brake System Braking Pattern Impact on Brake Fade in an Automobile Brake System 2 Literature Review," *J. Eng. Sci.*, vol. 6, no. February, pp. 10–16, 2020, doi: 10.21272/jes.2019.6(2).e2.
- [13] <sup>13</sup> A. Ricardo, "Dynamic analysis of three autoventilated disc brakes Análisis dinámico de tres frenos de disco autoventilados," *Ing. e Investig.*, vol. 37, no. 3, pp. 102–114, 2017, doi: 10.15446/ing.investig.v37n3.63381.
- [14] <sup>1</sup> D. Khorasani-zavareh, S. Shoar, and S. Saadat, "Antilock braking system effectiveness in prevention of road traffic crashes in Iran," *Khorasani-Zavareh al. BMC Public Heal.*, vol. 13, no. 439, pp. 2–7, 2015.
- [15] <sup>2</sup> A. Rahim, A. Rahman, M. M. Rahman, A. T. Asyhari, Z. Alam, and D. Ramasamy, "Evolution of IoT-enabled connectivity and applications in automotive industry: A review," *Veh. Commun.*, vol. 1, p. 100285, 2020, doi: 10.1016/j.vehcom.2020.100285.

# Car Brake Work Indicator Tool

---

## ORIGINALITY REPORT

---

14%

SIMILARITY INDEX

10%

INTERNET SOURCES

12%

PUBLICATIONS

11%

STUDENT PAPERS

---

## PRIMARY SOURCES

---

- |   |   |    |
|---|---|----|
| 1 | Submitted to Universiti Teknologi MARA<br>Student Paper   | 2% |
| 2 | Tanvir Ahmad, Mohd. Shahnan Bin Zainal Abidin, Norazlina Bte. Saidin. "Highly Birefringence Photonic Crystal Fiber: A New Frontier to Optical Pressure Sensor", 2020 Emerging Technology in Computing, Communication and Electronics (ETCCE), 2020<br>Publication | 1% |
| 3 | kar.kent.ac.uk<br>Internet Source   | 1% |
| 4 | ortus.rtu.lv<br>Internet Source   | 1% |
| 5 | www.tribology.fink.rs<br>Internet Source  | 1% |
| 6 | C. Bougard, D. Davenne, S. Moussay, S. Espié. "Evaluating sleep deprivation and time-of-day influences on crash avoidance maneuvers of young motorcyclists using a dynamic simulator", Journal of Safety Research, 2021<br>Publication                            | 1% |

---

7	Submitted to University of Sheffield Student Paper	1 %
8	journal.unj.ac.id Internet Source	1 %
9	Enrico Tolin, Oliver Litschke, Simona Bruni, Francesca Vipiana. "Compact Extended Scan Range Antenna Array Based on Rotman Lens", IEEE Transactions on Antennas and Propagation, 2019 Publication	1 %
10	Michelangelo-Santo Gulino, Leonardo Di Gangi, Alessio Sortino, Dario Vangi. "Injury risk assessment based on pre-crash variables: The role of closing velocity and impact eccentricity", Accident Analysis & Prevention, 2021 Publication	1 %
11	Submitted to Nottingham Trent University Student Paper	1 %
12	Submitted to Institute of Research & Postgraduate Studies, Universiti Kuala Lumpur Student Paper	1 %
13	revistas.sena.edu.co Internet Source	1 %
14	Submitted to University of Warwick	

---

<1 %

15

Submitted to De Montfort University

Student Paper

<1 %

16

Ricardo Andres García-León, Wilder Quintero-Quintero, Magda Rodriguez-Castilla. "Thermal analysis of three motorcycle disc brakes", Smart and Sustainable Built Environment, 2019

Publication

<1 %

17

Submitted to Innopolis University

Student Paper

<1 %

18

U.D. Idris, V.S. Aigbodion, I.J. Abubakar, C.I. Nwoye. "Eco-friendly asbestos free brake-pad: Using banana peels", Journal of King Saud University - Engineering Sciences, 2015

Publication

<1 %

19

[www.scilit.net](http://www.scilit.net)

Internet Source

<1 %

20

Dario Vangi, Antonio Virga, Michelangelo-Santo Gulino. "Combined activation of braking and steering for automated driving systems: adaptive intervention by injury risk-based criteria", Procedia Structural Integrity, 2019

Publication

<1 %

21

Natália Kováčsová, Marco Grottoli, Francesco Celiberti, Yves Lemmens et al. "Emergency braking at intersections: A motion-base motorcycle simulator study", Applied Ergonomics, 2020

Publication

<1 %

---

Exclude quotes Off

Exclude matches Off

Exclude bibliography Off

# Car Brake Work Indicator Tool

---

PAGE 1

---



**Frag.** This sentence may be a fragment or may have incorrect punctuation. Proofread the sentence to be sure that it has correct punctuation and that it has an independent clause with a complete subject and predicate.

PAGE 2

---



**Article Error** You may need to use an article before this word.



**Article Error** You may need to use an article before this word.



**Article Error** You may need to remove this article.

PAGE 3

---



**Missing ", "** You have a spelling or typing mistake that makes the sentence appear to have a comma error.



**Confused** You have used **A** in this sentence. You may need to use **an** instead.



**Article Error** You may need to remove this article.

PAGE 4

---



**Article Error** You may need to use an article before this word.



**Dup.** You have typed two **identical words** in a row. You may need to delete one of them.



**Confused** You have used **LED** in this sentence. You may need to use **lead** instead.



**Confused** You have used **LED** in this sentence. You may need to use **lead** instead.



**Confused** You have used **LED** in this sentence. You may need to use **lead** instead.



**Frag.** This sentence may be a fragment or may have incorrect punctuation. Proofread the sentence to be sure that it has correct punctuation and that it has an independent clause with a complete subject and predicate.



**Article Error** You may need to use an article before this word. Consider using the article **the**.





**Confused** You have used **LED** in this sentence. You may need to use **lead** instead.

PAGE 5

---



**Missing ", "** You may need to place a comma after this word.



**Wrong Article** You may have used the wrong article or pronoun. Proofread the sentence to make sure that the article or pronoun agrees with the word it describes.



**Confused** You have used **LED** in this sentence. You may need to use **lead** instead.



**Article Error** You may need to remove this article.

PAGE 6

---



**Frag.** This sentence may be a fragment or may have incorrect punctuation. Proofread the sentence to be sure that it has correct punctuation and that it has an independent clause with a complete subject and predicate.



**Wrong Article** You may have used the wrong article or pronoun. Proofread the sentence to make sure that the article or pronoun agrees with the word it describes.



**Article Error** You may need to use an article before this word.



**Confused** You have used **LED** in this sentence. You may need to use **lead** instead.



**Article Error** You may need to use an article before this word. Consider using the article **the**.



**S/V** This subject and verb may not agree. Proofread the sentence to make sure the subject agrees with the verb.

PAGE 7

---



**Confused** You have used **LED** in this sentence. You may need to use **lead** instead.



**S/V** This subject and verb may not agree. Proofread the sentence to make sure the subject agrees with the verb.



**Confused** You have used **LED** in this sentence. You may need to use **lead** instead.

PAGE 8

---



**S/V** This subject and verb may not agree. Proofread the sentence to make sure the subject agrees with the verb.



**Article Error** You may need to use an article before this word.



**Run-on** This sentence may be a run-on sentence. Proofread it to see if it contains too many independent clauses or contains independent clauses that have been combined without conjunctions or punctuation. Look at the "Writer's Handbook" for advice about correcting run-on sentences.



**Article Error** You may need to use an article before this word. Consider using the article **a**.



**Frag.** This sentence may be a fragment or may have incorrect punctuation. Proofread the sentence to be sure that it has correct punctuation and that it has an independent clause with a complete subject and predicate.



**Sentence Cap.** Remember to capitalize the first word of each sentence.



**Pronoun** This pronoun may be incorrect.

PAGE 9

---



**Article Error** You may need to remove this article.



**Article Error** You may need to use an article before this word.

PAGE 10

---