
Your manuscript submission - 1069422

1 message

Frontiers in Public Health Editorial Office <publichealth.editorial.office@frontiersin.org> Fri, Oct 14, 2022 at 1:19 AM
Reply-To: Frontiers in Public Health Editorial Office <publichealth.editorial.office@frontiersin.org>
To: Solikhah Solikhah <solikhah@ikm.uad.ac.id>

Dear Dr Solikhah

We are pleased to inform you that we have received the manuscript "Cross-cultural adaptation and psychometric properties of the Indonesian version for quality of life among breast cancer patients" to be considered for publication in Frontiers in Public Health, section Family Medicine and Primary Care.

You can access the review forum and track the progress of your manuscript using the following link:
<https://www.frontiersin.org/Journal/MySubmission.aspx?stage=100>

Your manuscript is now in the initial validation stage to determine its suitability for peer review. Should your manuscript be sent out for peer review, you will receive a notification once we receive the reports from reviewers and the interactive review forum is activated. You will then be able to read the review reports and exchange directly with the reviewers in the interactive review forum as well as submit a revised manuscript, if appropriate. If the required number of reviewers endorse your manuscript in the Independent Review stage, their tabs will be closed and the manuscript will be forwarded to the Review Finalized stage, where you will be able to interact with the handling editor via the Editor tab.

With best regards,

Your Frontiers in Public Health team

Frontiers | Editorial Office - Collaborative Peer Review Team
www.frontiersin.org

Avenue du Tribunal Fédéral 34,
1005 Lausanne, Switzerland
Office T 0041 215 10 17 91

For technical issues, please contact our IT Helpdesk (support@frontiersin.org) or visit our Frontiers Help Center (zendesk.frontiersin.org/hc/en-us)

-----MANUSCRIPT DETAILS-----

Manuscript title: Cross-cultural adaptation and psychometric properties of the Indonesian version for quality of life among breast cancer patients
Manuscript ID: 1069422
Authors: Solikhah Solikhah, Dyah Aryani Perwitasari and Dwi Sarwani Sri Rejeki
Journal: Frontiers in Public Health, section Family Medicine and Primary Care
Article type: Original Research
Submitted on: 13 Oct 2022
Research Topic: Explainable Multimodal AI in Cancer Patient Care: How Can We Reduce the Gap Between Technology and Practice?

-----ADDITIONAL INFORMATION-----

In order to enable a smooth and efficient review process, please familiarize yourself with the Frontiers review guidelines:
https://www.frontiersin.org/Journal/ReviewGuidelines.aspx?s=1495&name=family_medicine_and_primary_care

To take part in the Resource Identification Initiative please cite antibodies, genetically modified organisms,

software tools, data, databases and services using the corresponding catalog number and RRID in the text of your article. Please see here for more information: https://www.frontiersin.org/files/pdf/letter_to_author.pdf

You are receiving this email regarding ongoing activities you have with Frontiers. If you think this was wrongly sent to you, please contact our support team at support@frontiersin.org

Independent Review Report Submitted - 1069422

5 messages

Frontiers in Public Health Editorial Office

Wed, Nov 9, 2022 at 7:39

<publichealth.editorial.office@frontiersin.org>

PM

Reply-To: Frontiers in Public Health Editorial Office <publichealth.editorial.office@frontiersin.org>

To: Solikhah Solikhah <solikhah@ikm.uad.ac.id>

Dear Dr Solikhah,

A new review report has been submitted by a Reviewer 1. Once the other Reviewer(s) have submitted their comments, you will be granted access to the reports in the review forum, so that you can begin your revisions. Please be ready to respond and revise your manuscript promptly when they do.

Please click here to access this manuscript directly:

<http://review.frontiersin.org/review/1069422/0/0>

Manuscript title: Cross-cultural adaptation and psychometric properties of the Indonesian version for quality of life among breast cancer patients

Manuscript ID: 1069422

Authors: Solikhah Solikhah, Dyah Aryani Perwitasari and Dwi Sarwani Sri Rejeki

Journal: Frontiers in Public Health, section Family Medicine and Primary Care

Article type: Original Research

Submitted on: 13 Oct 2022

With best regards,

Your Frontiers in Public Health team

Frontiers | Editorial Office - Collaborative Peer Review Team

www.frontiersin.org[Avenue du Tribunal Fédéral 34,](#)

1005 Lausanne, Switzerland

Office T 0041 215 10 17 91

For technical issues, please contact our IT Helpdesk (support@frontiersin.org) or visit our Frontiers Help Center (zendesk.frontiersin.org/hc/en-us)

Independent Review Report, Reviewer 1

EVALUATION

Please list your revision requests for the authors and provide your detailed comments, including highlighting limitations and strengths of the study and evaluating the validity of the methods, results, and data interpretation. If you have additional comments based on Q2 and Q3 you can add them as well.

Comments to the author: MAJOR REVISION

- Thank you for the opportunity to review the manuscript titled (Cross-cultural adaptation and psychometric properties of the Indonesian version for quality of life among breast cancer patients).
- Check grammar Spelling and tense Please correct sampling technique.

Abstract: Methods: Study site, study sample size, duration of study, and data collection should be mentioned.

Conclusion should be more clear based on the results of the study.

Introduction:

- Line 98. Sentence started with (To address some of these problems ...) what are the problems? Clarify in details

the study rational.

- I did not see any useful information about EORTC QLQ BR45 (the English version)

Materials and Methods:

- Line 120, the author mentioned that the original EORTC QLQ BR45 was translated from English to Indonesian by two expert Indonesian professional translators...etc Who are these experts ? Trusted or not? You aim of this study is TRANSLATION, so translation should be accurate and precise . How can you trust by only two experts? How do I make sure that translation was not using GOOGLE translate. It is better to provide strong proof of translation documents (e.g accredited translation office....etc).

- Line 126. Sentence (... a pilot group consisting of 20 Indonesian breast cancer....), why only 20 breast cancer patients ? You final sample is 635 , so do you think it is appropriate to conduct a pilot study with only 20 patients ? and are these patients included or excluded from the final sample size ?

- Line 30, sentence started with (A total 635 of breast cancer patients...) how do you calculate the sample size ? Formula ? Please clarify .

- Data collection is not clear . How do you interview patients ? One time , or more ? face to face or online ? and are all patients educated (can read the EORTC QLQ BR45 questionnaires either English or Indo or not) ? All these information are missing . Please clarify.

- Line 139, inclusion criteria : Patients with advanced stage breast cancer or those who are receiving radiotherapy , hormonal therapy included or excluded ?

- Study instruments: What is the difference between EORTC QLQ BR45 and EORTC QLQ C30 questionnaires ? I think both of these questionnaires used to assess QOL among breast cancer patients . So why do you use both of them ? Please clarify .

Data analysis: No comments.

Check List

a. Is the quality of the figures and tables satisfactory?

Yes

b. Does the reference list cover the relevant literature adequately and in an unbiased manner?

Yes

c. Are the statistical methods valid and correctly applied? (e.g. sample size, choice of test)

No

d. Is a statistician required to evaluate this study?

Yes

e. Are the methods sufficiently documented to allow replication studies?

No

QUALITY ASSESSMENT:

Rigor

3

Quality of the writing

3

Overall quality of the content

3

Interest to a general audience

3

You are receiving this email regarding ongoing activities you have with Frontiers. If you think this was wrongly sent to you, please contact our support team at support@frontiersin.org

SOLIKHAH SOLIKHAH <solikhah@ikm.uad.ac.id>

Thu, Nov 10, 2022 at 4:19 PM

To: Frontiers in Public Health Editorial Office <publichealth.editorial.office@frontiersin.org>

Dear Editor,

Thank you very much for sending us the comment of the reviewer. However, when we click this link (<http://review.frontiersin.org/review/1069422/0/0>) we can't find thus file and we don't see the link for sending the author responses.

Please let me know how we send our responses.

Thank you for your kindness.

Best regards,
Solikhah S

[Quoted text hidden]

--

Solikhah Solikhah

Faculty of Public Health, Universitas Ahmad Dahlan, Yogyakarta, Indonesia

Jl. Prof. Soepomo, Janturan Warungboto, Yogyakarta 55164

ORCID ID: <http://orcid.org/0000-0001-6895-6840>

Scopus ID: <https://www.scopus.com/authid/detail.uri?authorId=57193766834>

Google scholar id: <https://scholar.google.co.id/citations?user=CgsW3H0AAAAJ&hl=en>

Journal: <http://www.journal.uad.ac.id/index.php/KesMas/index>

UNIVERSITAS AHMAD DAHLAN

Kampus 1: Jln. Kapas No. 9 Yogyakarta

Kampus 2: Jl. Pramuka 42, Sidikan, Umbulharjo, Yogyakarta 55161

Kampus 3: Jl. Prof. Dr. Soepomo, S.H., Janturan, Warungboto, Umbulharjo, Yogyakarta 55164

Kampus 4: Jl. Ringroad Selatan, Yogyakarta

Kampus 5: Jl. Ki Ageng Pemanahan 19, Yogyakarta

Telp. : +62 274 563515, 511830, 379418, 371120

Fax. : +62 274 564604

SOLIKHAH SOLIKHAH <solikhah@ikm.uad.ac.id>

Tue, Nov 15, 2022 at 9:00 AM

To: Frontiers in Public Health Editorial Office <publichealth.editorial.office@frontiersin.org>

Cc: publichealth@frontiersin.org

Dear Editor,

Thank you very much for sending us the comment of the reviewer. However, we didn't see the interactive review open

Please let me know how we send our responses.

Thank you for your kindness.

Best regards,
Solikhah S

On Wed, Nov 9, 2022 at 7:39 PM Frontiers in Public Health Editorial Office <publichealth.editorial.office@frontiersin.org> wrote:

[Quoted text hidden]

[Quoted text hidden]

Frontiers in Public Health - Peer Review

Tue, Nov 15, 2022 at 10:58

<publichealth.editorial.office@frontiersin.org>

PM

To: "solikhah@ikm.uad.ac.id" <solikhah@ikm.uad.ac.id>

Cc: "jl_robertus@hotmail.com" <jl_robertus@hotmail.com>

Dear Dr Solikhah,

Many thanks for your message and for taking action in the review forum of this manuscript.

You can only address the comments and respond to reviewers once the Interactive forum is activated. Currently we have only one reviewer submitted report. In order to open the Interactive forum we would require at least 2 reports submitted. Hence we have been looking to secure another Reviewer and have been sending invitations for this.

We have notified the handling editor about this and are actively working to ensure that the review process moves forward as soon as possible.

In the meantime, we kindly ask that you suggest a few candidates that might be suitable for evaluating your research and with whom you have no conflicts of interest. If you can, please provide us with the following information for each candidate:

Full name:

Affiliation:

Institutional/Work Email address:

We would recommend you send us at least 5 to 10 suggestions to maximize the chances of a response

I have copied in the handling editor/editors for their awareness and to take your suggestions into consideration.

The review forum is accessible via the link below:

<http://review.frontiersin.org/review/1069422/0/0>

Thank you for your understanding and cooperation, and please let us know if you have any questions or concerns.

Best wishes,

Sayed Husain

Customer Service Specialist

Frontiers | Editorial Office - Collaborative Peer Review Team

Frontiers

www.frontiersin.org

Avenue du Tribunal Fédéral 34,
1005 Lausanne, Switzerland
Office T +41 21 510 17 91

For technical issues, please visit our Frontiers Help Center [HELP CENTRE](#) or contact our support team on support@frontiersin.org

[Quoted text hidden]

UNIVERSITAS AHMAD DAHLAN

Kampus 1: Jln. Kapas No. 9 Yogyakarta

Kampus 2: Jl. Pramuka 42, Sidikan, Umbulharjo, Yogyakarta 55161

Kampus 3: Jl. Prof. Dr. Soepomo, S.H., Janturan, Warungboto, Umbulharjo, Yogyakarta 55164

Kampus 4: Jl. Ringroad Selatan, Yogyakarta

Kampus 5: Jl. Ki Ageng Pemanahan 19, Yogyakarta

Kontak

Email: info@uad.ac.id

Telp. : (0274) 563515, 511830, 379418, 371120

Fax. : (0274) 564604

ref:_00D58JetR._5004KQ7RSp:ref

SOLIKHAH SOLIKHAH <solikhah@ikm.uad.ac.id>

Fri, Dec 2, 2022 at 7:38 PM

To: Frontiers in Public Health - Peer Review <publichealth.editorial.office@frontiersin.org>

Cc: "jl_robertus@hotmail.com" <jl_robertus@hotmail.com>

Dear Editor

We would like to send the 5 candidates of reviewers following your request. Thank you very much.

Here is:

1. Dr Monthida Sangruangake

Faculty of Nursing, Khon Kaen University, Khon Kaen, Thailand. email: montsa@kku.ac.th

2. Dr Kavin Thinkhamrop; email: kavith@kku.ac.th

Data Management and Statistical Analysis Center, Faculty of Public Health, Khon Kaen University, Khon Kaen 40002, Thailand

3. Yunita Sari S.Kep., Ns. MHS., Ph.D

Faculty of Health Sciences, Universitas Jenderal Soedirman

Email address: yunita.sari@unsoed.ac.id

4. Siwi Pramatama M Wijayanti, M,Kes, Ph.D

Faculty of Health Sciences, Universitas Jenderal Soedirman

Institutional/Work Email address: siwi.wijayanti@unsoed.ac.id

5. Asst. Prof. Dr. Supot Kamsa-ard

Faculty of Public Health, Khon kaen University, Thailand

E-Mail : supot@kku.ac.th

Warm regards,

Dr. Solikhah S

[Quoted text hidden]

Action needed: Interactive review for your manuscript has been activated - 1069422

1 message

Frontiers in Public Health Editorial Office

<publichealth.editorial.office@frontiersin.org>

Reply-To: Frontiers in Public Health Editorial Office <publichealth.editorial.office@frontiersin.org>

To: Solikhah Solikhah <solikhah@ikm.uad.ac.id>

Sat, Dec 24, 2022 at 6:12

AM

Dear Dr Solikhah,

The interactive review of your manuscript "Cross-cultural adaptation and psychometric properties of the Indonesian version for quality of life among breast cancer patients" submitted to Frontiers in Public Health, section Family Medicine and Primary Care has now been activated.

Please respond by 06 Jan 2023 to all comments raised by the reviewers and editor in the online review forum. If a reviewer has finalized the review and discussion on the Reviewer tab is closed, you should submit a reply to pending comments in a new thread in the Editor tab. If necessary, you can also submit a revised version of your manuscript at that time. We encourage you to submit your documents with tracked changes to highlight the revisions.

To access the review forum and respond to the reviewers, please click on the following link:

<http://review.frontiersin.org/review/1069422/0/0>

With best regards,

Your Frontiers in Public Health team

Frontiers | Editorial Office - Collaborative Peer Review Team

www.frontiersin.org

Avenue du Tribunal Fédéral 34,
1005 Lausanne, Switzerland
Office T 0041 215 10 17 91

For technical issues, please contact our IT Helpdesk (support@frontiersin.org) or visit our Frontiers Help Center (zendesk.frontiersin.org/hc/en-us)

Manuscript title: Cross-cultural adaptation and psychometric properties of the Indonesian version for quality of life among breast cancer patients

Manuscript ID: 1069422

Authors: Solikhah Solikhah, Dyah Aryani Perwitasari and Dwi Sarwani Sri Rejeki

Journal: Frontiers in Public Health, section Family Medicine and Primary Care

Article type: Original Research

Submitted on: 13 Oct 2022

You are receiving this email regarding ongoing activities you have with Frontiers. If you think this was wrongly sent to you, please contact our support team at support@frontiersin.org

Looking forward to your revisions on Cross-cultural adaptation and psychometric properties of the Indonesian version for quality of life among breast cancer patients (ID: 1069422)

3 messages

Frontiers in Public Health <publichealth.editorial.office@frontiersin.com>

Wed, Jan 4, 2023 at 10:02 AM

Reply-To: Frontiers in Public Health <publichealth.editorial.office@frontiersin.com>

To: solikhah@ikm.uad.ac.id

Dear Solikhah,

I see that you will shortly be submitting the revisions of your paper currently under review: Cross-cultural adaptation and psychometric properties of the Indonesian version for quality of life among breast cancer patients [ID: 1069422].

Need some help? The Peer Review team at Frontiers will be happy to assist you! Please reach out to us via email if you are having any difficulties.

Or, if you need more time to respond to the feedback provided and resubmit your revised manuscript, please do use the "Request Extension" button on the Review Forum to extend your deadline: [Review Forum](#)

I am looking forward to your response in the coming days.

With very best wishes,

Dimitri Christodoulou
Head of Review Operations

[Frontiers](#)

Frontiers | Editorial Office - Collaborative Peer Review Team
Frontiers, 12 Moorgate, London EC2R 6DA

SOLIKHAH SOLIKHAH <solikhah@ikm.uad.ac.id>

Thu, Jan 5, 2023 at 4:58 PM

To: Frontiers in Public Health <publichealth.editorial.office@frontiersin.com>

Dear Editor in Chief

Regarding the review process, please let me know how to answer the comment from reviewer 1 (when they have finalized). Another comment (from reviewer 1) is still active, so my answer regarding the comment from reviewer has already been submitted.

Thank you for your kindness.

Warm regards,

Solikhah S

[Quoted text hidden]

--

Solikhah Solikhah

Faculty of Public Health, Universitas Ahmad Dahlan, Yogyakarta, Indonesia

Jl. Prof. Soepomo, Janturan Warungboto, Yogyakarta 55164

ORCID ID: <http://orcid.org/0000-0001-6895-6840>

Scopus ID: <https://www.scopus.com/authid/detail.uri?authorId=57193766834>

Google scholar id: <https://scholar.google.co.id/citations?user=CgsW3H0AAAAJ&hl=en>

Journal: <http://www.journal.uad.ac.id/index.php/KesMas/index>

UNIVERSITAS AHMAD DAHLAN

Kampus 1: Jln. Kapas No. 9 Yogyakarta

Kampus 2: Jl. Pramuka 42, Sidikan, Umbulharjo, Yogyakarta 55161

Kampus 3: Jl. Prof. Dr. Soepomo, S.H., Janturan, Warungboto, Umbulharjo, Yogyakarta 55164

Kampus 4: Jl. Ringroad Selatan, Yogyakarta

Kampus 5: Jl. Ki Ageng Pemanahan 19, Yogyakarta

Telp. : +62 274 563515, 511830, 379418, 371120

Fax. : +62 274 564604

Frontiers in Public Health - Peer Review <publichealth.editorial.office@frontiersin.org> Thu, Jan 5, 2023 at 8:47 PM
To: "solikhah@ikm.uad.ac.id" <solikhah@ikm.uad.ac.id>

Dear Dr Solikhah,

thank you for your email.

Because Reviewer 1 finalized the review you cannot answer directly in "Reviewer 1 tab". Please use the editor tab to answer to Reviewer 1 comments so that the Editor will be able to take them into consideration when they have to take their final decision.

I remain at your disposal for any questions or concerns.

Kind regards,
Alessia

--

Alessia Andena
Customer Service Specialist

Frontiers | Editorial Office | Collaborative Peer Review Team
Head of Review Operations: Dimitri Christodoulou

www.frontiersin.org
Frontiers Media Limited
35 New Broad St
London EC2M 1NH, United Kingdom

[Quoted text hidden]

UNIVERSITAS AHMAD DAHLAN

Kampus 1: Jln. Kapas No. 9 Yogyakarta

Kampus 2: Jl. Pramuka 42, Sidikan, Umbulharjo, Yogyakarta 55161

Kampus 3: *Jl. Prof. Dr. Soepomo, S.H., Janturan, Warungboto, Umbulharjo, Yogyakarta 55164*

Kampus 4: *Jl. Ringroad Selatan, Yogyakarta*

Kampus 5: *Jl. Ki Ageng Pemanahan 19, Yogyakarta*

Kontak

Email: info@uad.ac.id

Telp. : (0274) 563515, 511830, 379418, 371120

Fax. : (0274) 564604

ref:_00D58JetR._5004KSH4uY:ref

Frontiers: New Comments in the Interactive Review Forum - 1069422

3 messages

Frontiers Public Health Editorial Office <publichealth.editorial.office@frontiersin.org> Mon, Jan 9, 2023 at 7:53 PM
Reply-To: Frontiers Public Health Editorial Office <publichealth.editorial.office@frontiersin.org>
To: solikhah@ikm.uad.ac.id

Dear Dr Solikhah,

Frontiers Public Health Editorial Office has sent you a message. Please click 'Reply' to send a direct response

New comments were posted by Editorial Office Frontiers in Public Health Editorial Office. Please visit the review forum using the link below:

<http://www.frontiersin.org/Review/EnterReviewForum.aspx?activationno=c1417583-9fab-4aec-99aa-7f9115afc008>

Journal: Frontiers in Public Health, section Family Medicine and Primary Care

Article type: Original Research

Manuscript title: Cross-cultural adaptation and psychometric properties of the Indonesian version for quality of life among breast cancer patients

Manuscript ID: 1069422

Authors: Solikhah Solikhah, Dyah Aryani Perwitasari, Dwi Sarwani Sri Rejeki

Submitted on: 13 Oct 2022

Edited by: Jan Lukas Robertus

Research Topic: Explainable Multimodal AI in Cancer Patient Care: How Can We Reduce the Gap Between Technology and Practice?

With best regards,

Your Frontiers in Public Health team

Frontiers | Editorial Office - Collaborative Peer Review Team

www.frontiersin.org

[Avenue du Tribunal Fédéral 34,](#)

1005 Lausanne, Switzerland

Office T 0041 215 10 17 91

For technical issues, please contact our IT Helpdesk (support@frontiersin.org) or visit our Frontiers Help Center (zendesk.frontiersin.org/hc/en-us)

SOLIKHAH SOLIKHAH <solikhah@ikm.uad.ac.id>

Tue, Jan 10, 2023 at 11:46 AM

To: Frontiers Public Health Editorial Office <publichealth.editorial.office@frontiersin.org>

Dear Editor

Please kindly check our revised manuscript including the comment from Reviewer 1. Thank you for your kindness.

Warm Regards

Dr. Solikhah

[Quoted text hidden]

--

Solikhah Solikhah

Faculty of Public Health, Universitas Ahmad Dahlan, Yogyakarta, Indonesia

Jl. Prof. Soepomo, Janturan Warungboto, Yogyakarta 55164

ORCID ID: <http://orcid.org/0000-0001-6895-6840>

Scopus ID: <https://www.scopus.com/authid/detail.uri?authorId=57193766834>

Google scholar id: <https://scholar.google.co.id/citations?user=CgsW3H0AAAAJ&hl=en>

Journal: <http://www.journal.uad.ac.id/index.php/KesMas/index>

UNIVERSITAS AHMAD DAHLAN

Kampus 1: Jln. Kapas No. 9 Yogyakarta

Kampus 2: Jl. Pramuka 42, Sidikan, Umbulharjo, Yogyakarta 55161

Kampus 3: Jl. Prof. Dr. Soepomo, S.H., Janturan, Warungboto, Umbulharjo, Yogyakarta 55164

Kampus 4: Jl. Ringroad Selatan, Yogyakarta

Kampus 5: Jl. Ki Ageng Pemanahan 19, Yogyakarta

Telp. : +62 274 563515, 511830, 379418, 371120

Fax. : +62 274 564604

Frontiers in Public Health - Peer Review

Wed, Jan 11, 2023 at 9:35

<publichealth.editorial.office@frontiersin.org>

PM

To: "solikhah@ikm.uad.ac.id" <solikhah@ikm.uad.ac.id>

Cc: "jl_robertus@hotmail.com" <jl_robertus@hotmail.com>

Dear Dr. Solikhah,

Many thanks for your message and for taking action in the review forum of this manuscript.

Also thanks for addressing the comments of the reviewers and for resubmitting the revised copy.

As soon as there is an update, you will be notified. Please rest assured that we will act to the best of our abilities to expedite the review process for your manuscript.

If there is anything we can assist you with in the meantime, please do not hesitate to contact us, as we would be happy to help.

Access: <http://review.frontiersin.org/review/1069422/0/0>

Best wishes,

Sayed Husain

Customer Service Specialist

Frontiers | Editorial Office - Collaborative Peer Review Team

Frontiers

www.frontiersin.org

Avenue du Tribunal Fédéral 34,

1005 Lausanne, Switzerland

Office T +41 21 510 17 91

For technical issues, please visit our Frontiers Help Center [HELP CENTRE](#) or contact our support team on support@frontiersin.org

[Quoted text hidden]

UNIVERSITAS AHMAD DAHLAN

Kampus 1: *Jln. Kapas No. 9 Yogyakarta*

Kampus 2: *Jl. Pramuka 42, Sidikan, Umbulharjo, Yogyakarta 55161*

Kampus 3: *Jl. Prof. Dr. Soepomo, S.H., Janturan, Warungboto, Umbulharjo, Yogyakarta 55164*

Kampus 4: *Jl. Ringroad Selatan, Yogyakarta*

Kampus 5: *Jl. Ki Ageng Pemanahan 19, Yogyakarta*

Kontak

Email: info@uad.ac.id

Telp. : (0274) 563515, 511830, 379418, 371120

Fax. : (0274) 564604

ref:_00D58JetR._5004KSHuIJ:ref

Frontiers: New Comments in the Interactive Review Forum - 1069422

3 messages

Frontiers Public Health Editorial Office <publichealth.editorial.office@frontiersin.org> Mon, Jan 9, 2023 at 7:53 PM
Reply-To: Frontiers Public Health Editorial Office <publichealth.editorial.office@frontiersin.org>
To: solikhah@ikm.uad.ac.id

Dear Dr Solikhah,

Frontiers Public Health Editorial Office has sent you a message. Please click 'Reply' to send a direct response

New comments were posted by Editorial Office Frontiers in Public Health Editorial Office. Please visit the review forum using the link below:

<http://www.frontiersin.org/Review/EnterReviewForum.aspx?activationno=c1417583-9fab-4aec-99aa-7f9115afc008>

Journal: Frontiers in Public Health, section Family Medicine and Primary Care

Article type: Original Research

Manuscript title: Cross-cultural adaptation and psychometric properties of the Indonesian version for quality of life among breast cancer patients

Manuscript ID: 1069422

Authors: Solikhah Solikhah, Dyah Aryani Perwitasari, Dwi Sarwani Sri Rejeki

Submitted on: 13 Oct 2022

Edited by: Jan Lukas Robertus

Research Topic: Explainable Multimodal AI in Cancer Patient Care: How Can We Reduce the Gap Between Technology and Practice?

With best regards,

Your Frontiers in Public Health team

Frontiers | Editorial Office - Collaborative Peer Review Team

www.frontiersin.org

[Avenue du Tribunal Fédéral 34,](#)

1005 Lausanne, Switzerland

Office T 0041 215 10 17 91

For technical issues, please contact our IT Helpdesk (support@frontiersin.org) or visit our Frontiers Help Center (zendesk.frontiersin.org/hc/en-us)

SOLIKHAH SOLIKHAH <solikhah@ikm.uad.ac.id>

Tue, Jan 10, 2023 at 11:46 AM

To: Frontiers Public Health Editorial Office <publichealth.editorial.office@frontiersin.org>

Dear Editor

Please kindly check our revised manuscript including the comment from Reviewer 1. Thank you for your kindness.

Warm Regards

Dr. Solikhah

[Quoted text hidden]

--

Solikhah Solikhah

Faculty of Public Health, Universitas Ahmad Dahlan, Yogyakarta, Indonesia

Jl. Prof. Soepomo, Janturan Warungboto, Yogyakarta 55164

ORCID ID: <http://orcid.org/0000-0001-6895-6840>

Scopus ID: <https://www.scopus.com/authid/detail.uri?authorId=57193766834>

Google scholar id: <https://scholar.google.co.id/citations?user=CgsW3H0AAAAJ&hl=en>

Journal: <http://www.journal.uad.ac.id/index.php/KesMas/index>

UNIVERSITAS AHMAD DAHLAN

Kampus 1: Jln. Kapas No. 9 Yogyakarta

Kampus 2: Jl. Pramuka 42, Sidikan, Umbulharjo, Yogyakarta 55161

Kampus 3: Jl. Prof. Dr. Soepomo, S.H., Janturan, Warungboto, Umbulharjo, Yogyakarta 55164

Kampus 4: Jl. Ringroad Selatan, Yogyakarta

Kampus 5: Jl. Ki Ageng Pemanahan 19, Yogyakarta

Telp. : +62 274 563515, 511830, 379418, 371120

Fax. : +62 274 564604

Frontiers in Public Health - Peer Review

<publichealth.editorial.office@frontiersin.org>

To: "solikhah@ikm.uad.ac.id" <solikhah@ikm.uad.ac.id>

Cc: "jl_robertus@hotmail.com" <jl_robertus@hotmail.com>

Wed, Jan 11, 2023 at 9:35
PM

Dear Dr. Solikhah,

Many thanks for your message and for taking action in the review forum of this manuscript.

Also thanks for addressing the comments of the reviewers and for resubmitting the revised copy.

As soon as there is an update, you will be notified. Please rest assured that we will act to the best of our abilities to expedite the review process for your manuscript.

If there is anything we can assist you with in the meantime, please do not hesitate to contact us, as we would be happy to help.

Access: <http://review.frontiersin.org/review/1069422/0/0>

Best wishes,

Sayed Husain

Customer Service Specialist

Frontiers | Editorial Office - Collaborative Peer Review Team

Frontiers

www.frontiersin.org

Avenue du Tribunal Fédéral 34,

1005 Lausanne, Switzerland

Office T +41 21 510 17 91

For technical issues, please visit our Frontiers Help Center [HELP CENTRE](#) or contact our support team on support@frontiersin.org

[Quoted text hidden]

UNIVERSITAS AHMAD DAHLAN

Kampus 1: *Jln. Kapas No. 9 Yogyakarta*

Kampus 2: *Jl. Pramuka 42, Sidikan, Umbulharjo, Yogyakarta 55161*

Kampus 3: *Jl. Prof. Dr. Soepomo, S.H., Janturan, Warungboto, Umbulharjo, Yogyakarta 55164*

Kampus 4: *Jl. Ringroad Selatan, Yogyakarta*

Kampus 5: *Jl. Ki Ageng Pemanahan 19, Yogyakarta*

Kontak

Email: info@uad.ac.id

Telp. : (0274) 563515, 511830, 379418, 371120

Fax. : (0274) 564604

ref:_00D58JetR._5004KSHuIJ:ref

New Comments in the Interactive Review Forum - 1069422

3 messages

Frontiers in Public Health Editorial Office

Thu, Jan 19, 2023 at 8:02

<publichealth.editorial.office@frontiersin.org>

PM

Reply-To: Frontiers in Public Health Editorial Office <publichealth.editorial.office@frontiersin.org>

To: Solikhah Solikhah <solikhah@ikm.uad.ac.id>

Dear Dr Solikhah,

New comments were posted by the reviewer 2.

Please visit the interactive review forum using the link below and address these comments within the coming week.

<https://review.frontiersin.org/review/bootstrap/8b4f5226-069f-458f-ab63-285765ef8c29>

You should aim to respond as soon as possible, directly via the online review forum, to all comments in the review reports and editor tab. If appropriate, you can also submit a revised version of your manuscript. We appreciate your timely response.

Remember that there can be more than one iteration between authors and reviewers, and only when all comments by the reviewers are addressed successfully can the review be finalized.

We wish you a successful interactive review, and remain at your disposal for any questions.

With best regards,

Your Frontiers in Public Health team

Frontiers | Editorial Office - Collaborative Peer Review Team

www.frontiersin.org[Avenue du Tribunal Fédéral 34,](#)

1005 Lausanne, Switzerland

Office T 0041 215 10 17 91

For technical issues, please contact our IT Helpdesk (support@frontiersin.org) or visit our Frontiers Help Center (zendesk.frontiersin.org/hc/en-us)-----
Manuscript title: Cross-cultural adaptation and psychometric properties of the Indonesian version for quality of life among breast cancer patients

Manuscript ID: 1069422

Authors: Solikhah Solikhah, Dyah Aryani Perwitasari and Dwi Sarwani Sri Rejeki

Journal: Frontiers in Public Health, section Family Medicine and Primary Care

Article type: Original Research

Submitted on: 13 Oct 2022

Edited by: Jan Lukas Robertus

Research Topic: Explainable Multimodal AI in Cancer Patient Care: How Can We Reduce the Gap Between Technology and Practice?

You are receiving this email regarding ongoing activities you have with Frontiers. If you think this was wrongly sent to you, please contact our support team at support@frontiersin.org

SOLIKHAH SOLIKHAH <solikhah@ikm.uad.ac.id>

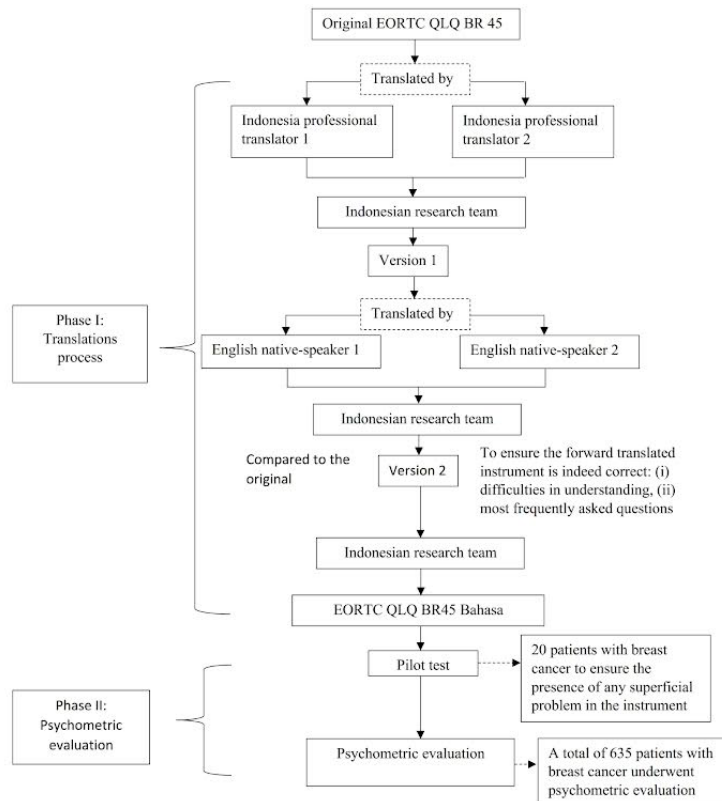
Mon, Jan 23, 2023 at 7:35 AM

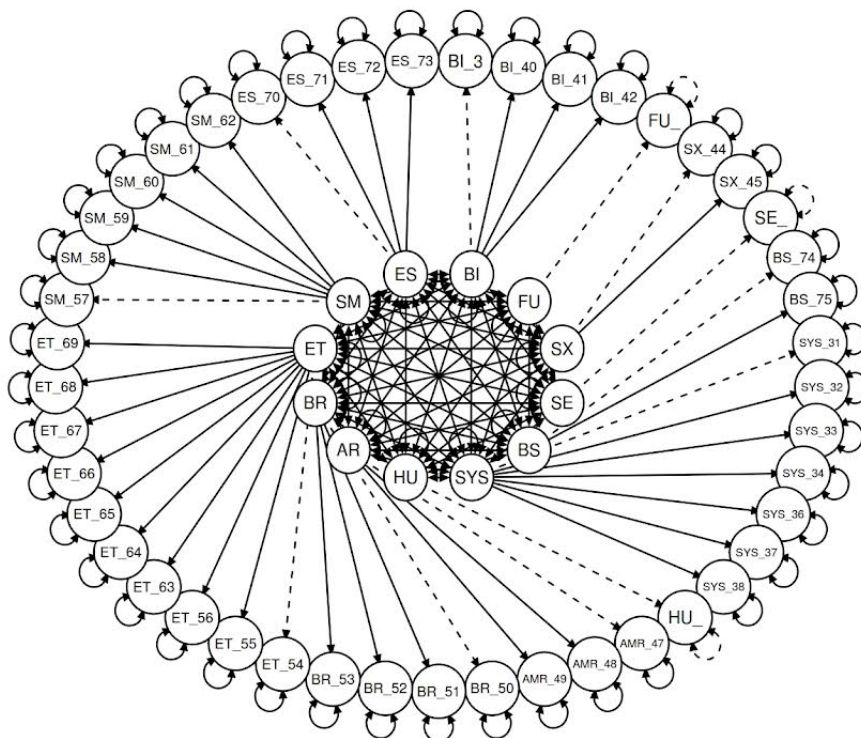
To: Frontiers in Public Health Editorial Office <publichealth.editorial.office@frontiersin.org>

Dear Editor and Reviewer 2

Thank you for your comments and suggestions for improving our manuscript. When we try to resubmit our revised manuscript through the Blue Re-submit manuscript button, the system can't open it. Please, kindly help us and guide us for doing how to send our response to Reviewer 2. Otherwise, We also upload our revised manuscript and our response to reviewer 2 through this attached file in this email.

Thank you for your kindness





Best Regards,
Dr. Solikhah S

[Quoted text hidden]

--

Solikhah Solikhah

Faculty of Public Health, Universitas Ahmad Dahlan, Yogyakarta, Indonesia

Jl. Prof. Soepomo, Janturan Warungboto, Yogyakarta 55164

ORCID ID: <http://orcid.org/0000-0001-6895-6840>

Scopus ID: <https://www.scopus.com/authid/detail.uri?authorId=57193766834>

Google scholar id: <https://scholar.google.co.id/citations?user=CgsW3H0AAAAJ&hl=en>

Journal: <http://www.journal.uad.ac.id/index.php/KesMas/index>

UNIVERSITAS AHMAD DAHLAN

Kampus 1: Jln. Kapas No. 9 Yogyakarta

Kampus 2: Jl. Pramuka 42, Sidikan, Umbulharjo, Yogyakarta 55161

Kampus 3: Jl. Prof. Dr. Soepomo, S.H., Janturan, Warungboto, Umbulharjo, Yogyakarta 55164


Kampus 4: Jl. Ringroad Selatan, Yogyakarta


Kampus 5: Jl. Ki Ageng Pemanahan 19, Yogyakarta

Telp. : +62 274 563515, 511830, 379418, 371120

Fax. : +62 274 564604

3 attachments

 **MS 12092022-edited_2.pdf**
448K

 **MS 12092022-edited_2.docx**
292K

 **Responses to reviewer_2.docx**
21K

Frontiers in Public Health - Peer Review <publichealth.editorial.office@frontiersin.org> Tue, Jan 24, 2023 at 1:25 AM
To: "solikhah@ikm.uad.ac.id" <solikhah@ikm.uad.ac.id>

Dear Dr Solikhah,

Thank you for your kind email and I sincerely regret the delay in getting back to you sooner.

I can see that you have successfully posted your comments to Reviewer#1 and Reviewer#2 in the Editor Tab and there is a resubmission of your paper from today so I assume the below is now solved.

If this isn't the case, please let me know in reply to this email and I will be happy to assist.

Kindest regards and wishes for a Bright and Successful New 2023 🎉,
Ani

--
Ani Mihaylova
Review Operations Specialist

Frontiers | Editorial Office - Collaborative Peer Review Team
Review Operations Manager: Courtney Kaye

Frontiers
www.frontiersin.org
Avenue du Tribunal Fédéral 34,
1005 Lausanne, Switzerland
Office T +41 215 18 91 64

For technical issues, please contact our IT Helpdesk (support@frontiersin.org) or visit our Frontiers Help Center (zendesk.frontiersin.org/hc/en-us)

[Quoted text hidden]

UNIVERSITAS AHMAD DAHLAN

Kampus 1: Jln. Kapas No. 9 Yogyakarta

Kampus 2: Jl. Pramuka 42, Sidikan, Umbulharjo, Yogyakarta 55161

Kampus 3: Jl. Prof. Dr. Soepomo, S.H., Janturan, Warungboto, Umbulharjo, Yogyakarta 55164

Kampus 4: Jl. Ringroad Selatan, Yogyakarta

Kampus 5: Jl. Ki Ageng Pemanahan 19, Yogyakarta

Kontak

Email: info@uad.ac.id

Telp. : (0274) 563515, 511830, 379418, 371120

Fax. : (0274) 564604

ref:_00D58JetR._5004KTChus:ref

Frontiers: Your manuscript is accepted - 1069422

4 messages

Frontiers Public Health Editorial Office <publichealth.editorial.office@frontiersin.org> Thu, Feb 9, 2023 at 8:06 PM
Reply-To: Frontiers Public Health Editorial Office <publichealth.editorial.office@frontiersin.org>
To: solikhah@ikm.uad.ac.id

Dear Dr Solikhah,

Frontiers Public Health Editorial Office has sent you a message. Please click 'Reply' to send a direct response

We are pleased to inform you of the acceptance of your article referenced below.

The editor left the following message to your attention upon endorsement:

"Thank you for your prompt responses to the reviewers' comments. Your paper will give a valuable contribution to understanding how the quality of life can best be evaluated, in particular for patients with breast cancer. I look forward to further contributions from your group. Should you consider submitting to Frontiers."

I am pleased to inform you that your manuscript "Cross-cultural adaptation and psychometric properties of the Indonesian version for quality of life among breast cancer patients" has been approved for production and accepted for publication in Frontiers in Public Health, section Family Medicine and Primary Care. Proofs are being prepared for you to verify before publication. We will also perform final checks to ensure your manuscript meets our criteria for publication (<https://www.frontiersin.org/about/review-system#ManuscriptQualityStandards>).

The title, abstract and author(s) list you provided during submission is currently online and will be replaced with the final version when your article is published. Please do not communicate any changes until you receive your proofs.

Any questions? Please visit our Production Help Center page for more information: <https://zendesk.frontiersin.org/hc/en-us/categories/200397292-Article-Production->

You can click here to access the final review reports and manuscript: <http://www.frontiersin.org/Review/EnterReviewForum.aspx?activationno=0bf3e908-31f8-4515-97e1-2860e4139703>

As an author, it is important that you keep your Frontiers research network (Loop) profile up to date, so that you and your publications are more discoverable. You can update your profile pages (profile picture, short bio, list of publications) using this link: <https://loop.frontiersin.org/people/>

Best regards,
Your Frontiers in Public Health Team,

Frontiers | Editorial Office - Collaborative Peer Review Team
www.frontiersin.org
Avenue du Tribunal Fédéral 34
1005 Lausanne Switzerland

For technical issues please contact our IT Helpdesk (support@frontiersin.org) or visit our Frontiers Help Center (zendesk.frontiersin.org/hc/en-us)

We want to hear about your experience with Frontiers.

We are constantly striving to improve our peer review process, please complete our short 3-minute survey to tell us about your experience, your opinion is important and will guide future development.

https://frontiersin.qualtrics.com/jfe/form/SV_aW5zUzZQ1ZbOKQ6?survey=authorapproved&ArticleId=1069422&UserId=1208971&FinalDecision=Accepted

Thank you very much for taking the time to share your thoughts.

 Manuscript title: Cross-cultural adaptation and psychometric properties of the Indonesian version for quality of life among breast cancer patients
 Journal: Frontiers in Public Health, section Family Medicine and Primary Care
 Article type: Original Research
 Authors: Solikhah Solikhah, Dyah Aryani Perwitasari, Dwi Sarwani Sri Rejeki
 Manuscript ID: 1069422
 Edited by: Jan Lukas Robertus

SOLIKHAH SOLIKHAH <solikhah@ikm.uad.ac.id>

Fri, Feb 10, 2023 at 2:56 PM

To: Frontiers Public Health Editorial Office <publichealth.editorial.office@frontiersin.org>, accounting@frontiersin.org

Dear Frontiers in Public Health Team

Thank you so much for the good news that my manuscript was accepted in the Frontiers in Public Health. I have paid a payment through the link that you send me an email. Here please kindly find attached my payment. However, I can't find my transaction pdf file in my profile of this journal. Thank you.

Warm regards,

Solikhah

[Quoted text hidden]

--

Solikhah Solikhah

Faculty of Public Health, Universitas Ahmad Dahlan, Yogyakarta, Indonesia

Jl. Prof. Soepomo, Janturan Warungboto, Yogyakarta 55164

ORCID ID: <http://orcid.org/0000-0001-6895-6840>

Scopus ID: <https://www.scopus.com/authid/detail.uri?authorId=57193766834>

Google scholar id: <https://scholar.google.co.id/citations?user=CgsW3H0AAAAJ&hl=en>

Journal: <http://www.journal.uad.ac.id/index.php/KesMas/index>

UNIVERSITAS AHMAD DAHLAN

Kampus 1: Jln. Kapas No. 9 Yogyakarta

Kampus 2: Jl. Pramuka 42, Sidikan, Umbulharjo, Yogyakarta 55161

Kampus 3: Jl. Prof. Dr. Soepomo, S.H., Janturan, Warungboto, Umbulharjo, Yogyakarta 55164

Kampus 4: Jl. Ringroad Selatan, Yogyakarta

Kampus 5: Jl. Ki Ageng Pemanahan 19, Yogyakarta

Telp. : +62 274 563515, 511830, 379418, 371120

Fax. : +62 274 564604

2 attachments



payment receipt_.jpg
723K

 **payment receipt frontiers in public health.pdf**
110K

Frontiers Accounting Office <accounting@frontiersin.org>
Reply-To: Frontiers Accounting Office <accounting@frontiersin.org>
To: solikhah <solikhah@ikm.uad.ac.id>

Fri, Feb 10, 2023 at 2:59 PM



Accounting Office

accounting@frontiersin.org

Your request (890412) has been received and is being reviewed by our Accounting Office.

As we are experiencing a large number of queries at the moment, we'll deal with your request as soon as possible. Thank you for your patience.

To add additional comments, reply to this email.

Please visit the **Frontiers Help Center**

© 2007–2022 Frontiers Media SA. All Rights Reserved.

You have been sent this message because you recently submitted a help request to Frontiers.
Any information that you provide will be treated in accordance with our [Terms and Conditions](#).

[86KO9E-M55X4]

Angelika Rodzeń (Frontiers Accounting Office) <accounting@frontiersin.org>
Reply-To: Frontiers Accounting Office <accounting@frontiersin.org>
To: solikhah <solikhah@ikm.uad.ac.id>

Tue, Feb 14, 2023 at 6:24 PM



Accounting Office

accounting@frontiersin.org

Your request (890412) has been solved. To reopen this request, reply to this email.

Angelika Rodzeń (Frontiers Accounting Office)

Dear Dr. Solikhah,

Thank you for your email.

Please find attached your payment receipt as requested.

Should you have any additional queries, please do not hesitate to contact us again.

Best regards,

Angelika Rodzeń

Frontiers | Accounting Office
Avenue du Tribunal-Fédéral 34
CH-1005 Lausanne, Switzerland

www.frontiersin.org

T +41 (21) 510 17 03

solikhah

[Quoted text hidden]

--

Solikhah Solikhah

Faculty of Public Health, Universitas Ahmad Dahlan, Yogyakarta, Indonesia

Jl. Prof. Soepomo, Janturan Warungboto, Yogyakarta 55164

ORCID ID: <http://orcid.org/0000-0001-6895-6840>

Scopus ID: <https://www.scopus.com/authid/detail.uri?authorId=57193766834>

Google scholar id: <https://scholar.google.co.id/citations?user=CgsW3H0AAAAJ&hl=en>

Journal: <http://www.journal.uad.ac.id/index.php/KesMas/index>

UNIVERSITAS AHMAD DAHLAN

Kampus 1: Jln. Kapas No. 9 Yogyakarta

Kampus 2: Jl. Pramuka 42, Sidikan, Umbulharjo, Yogyakarta 55161

Kampus 3: Jl. Prof. Dr. Soepomo, S.H., Janturan, Warungboto, Umbulharjo, Yogyakarta 55164

Kampus 4: Jl. Ringroad Selatan, Yogyakarta

Kampus 5: Jl. Ki Ageng Pemanahan 19, Yogyakarta

Telp. : +62 274 563515, 511830, 379418, 371120

Fax. : +62 274 564604

UNIVERSITAS AHMAD DAHLAN

Kampus 1: Jln. Kapas No. 9 Yogyakarta

Kampus 2: Jl. Pramuka 42, Sidikan, Umbulharjo, Yogyakarta 55161

Kampus 3: Jl. Prof. Dr. Soepomo, S.H., Janturan, Warungboto, Umbulharjo, Yogyakarta 55164

Kampus 4: Jl. Ringroad Selatan, Yogyakarta

Kampus 5: Jl. Ki Ageng Pemanahan 19, Yogyakarta

Kontak

Email: info@uad.ac.id

Telp. : (0274) 563515, 511830, 379418, 371120

Fax. : (0274) 564604

Attachment(s)

[payment receipt frontiers in public health.pdf](#)

[payment receipt_.jpg](#)

Please visit the **Frontiers Help Center**

© 2007–2022 Frontiers Media SA. All Rights Reserved.

You have been sent this message because you recently submitted a help request to Frontiers.
Any information that you provide will be treated in accordance with our [Terms and Conditions](#).

[Quoted text hidden]

 **Confirmation - Payment received.pdf**
174K