

HASIL CEK_Jurnal PIJAR MIPA

by Jurnal Pijar Mipa Biologi

Submission date: 02-Dec-2022 10:03AM (UTC+0700)

Submission ID: 1968849117

File name: C-Revisi_Jurnal_PIJAR_MIPA_english_095609.doc (4.48M)

Word count: 5362

Character count: 28721

Ichsan Luqmana Indra Putra^{1*}, Haris Setiawan², Suci Resty Rahmadini³

¹Ecology and Systematics Research Laboratory, Biology Study Program, Faculty of Applied Science and Technology, Ahmad Dahlan University, Jl. Ahmad Yani (Ring Road Selatan), Kragilan, Tamanan, Banguntapan, Bantul, Indonesia – 55191

²Laboratory of Physiology and Animal Structure, Biology Study Program, Faculty of Applied Science and Technology, Ahmad Dahlan University, Jl. Ahmad Yani (Ring Road Selatan), Kragilan, Tamanan, Banguntapan, Bantul, Indonesia – 55191

³ Biology Study Program, Faculty of Applied Science and Technology, Ahmad Dahlan University, Jl. Ahmad Yani (Ring Road Selatan), Kragilan, Tamanan, Banguntapan, Bantul, Indonesia - 55191

E-mail: ichsan.luqmana@bio.uad.ac.id

ABSTRACT.

Land conversion around campus 4 of Ahmad Dahlan University Yogyakarta will affect the diversity and abundance of pollinating insects, one of which is bees. The purpose of this study was to calculate the level of diversity and abundance of bees on campus 4 UAD and its surroundings. The sampling area consists of 4 plots with each plot measuring 1750 m² (35 mx 50 m) which was determined using the observation method. Sampling was carried out 3 times, which was carried out in the morning at 07.00 – 11.00 and continued in the afternoon at 15.00 – 17.00. Bees were identified by comparing their morphological characters with identification reference books and journals. The bee abundance data and abiotic factors were then analyzed by Spearman correlation test. The results showed that the level of bee diversity on campus 4 UAD and its surroundings showed a moderate level (1 H' 3). The most abundant bee species was *Xylocopa aestuan* with 118 individuals and the least abundant was *Apis mellifera* with 7 individuals. The conclusion of this study is the state of the ecosystem on campus 4 UAD and its surroundings there is a disturbance in the form of land use change, but the disturbance can still be tolerated by bees.

Keywords: *Apis mellifera*, bee, campus 4 UAD, land conversion, *Xylocopa aestuans*

I. PENDAHULUAN

One of the insects that has various important roles in the ecosystem and is a key species is the bee (Hymenoptera: Apidae)^[1]. Bees are insects from the Apidae family and consist of many species. Research by Susilawati et al.^[2] on cucumber plants, stated that the distance between agricultural land and natural habitat affects the species richness and abundance of insects, especially bees. Shifting natural habitats into other functions, such as housing^[3] or educational locations^[4] can result in a decrease in species diversity and abundance of bees in these ecosystems^[5]. The land that used to be an empty land area with lots of flowering weeds has turned into campus buildings and densely populated areas such as housing and student boarding houses. The existence of this massive development can certainly reduce the area of green open areas with flowering weeds used by bees as food. Locations with ecosystems that change function due to massive development, one of which is campus 4 of Ahmad Dahlan University (UAD).

Ahmad Dahlan University is a private university in Yogyakarta and has campuses spread across. One of the UAD campuses that is still under construction is campus 4. This development causes reduced open space and trees and can result in reduced species diversity and abundance of bees around UAD campus 4^[6]. Research on the diversity of bees was conducted by Indraswari et al.^[7], on tomato plants in the Cisarua area, Bogor, West Java, with the result that 11 species of bees were found. Kusuma and Doi^[8], in Rajasthan City, India, conducted a study on bee diversity, which took samples at 2 places, namely Government College and Herbal Park, which found that the Government College area contained the most dominant species from the Apidae family, namely *Apis dorsata*. Research on the diversity of insects around UAD campus 4 was conducted by Putra et al.^[9] regarding the diversity of ant species and other research by Putra et al.^[10] about the diversity of butterfly species. However, research on the diversity of bees itself has never been carried out around campus 4 UAD Yogyakarta. Thus, this research is important as an effort to determine the diversity and abundance of bees around campus 4 UAD Yogyakarta as a reference for campus development by paying attention to the ecosystems around campus 4 UAD Yogyakarta as well as being a database or as a reference for bee identification research around campus 4 UAD Yogyakarta.

II. RESEARCH METHOD

Materials

18

The materials used in this study were bee samples obtained from the field, 70% alcohol to preserve the bees, magic chalk to prevent insects from drying the bees.

Methods

1. Determination of Sampling Location

The research locations were carried out in 4 areas which included the area around campus 4 of Ahmad Dahlan University, Yogyakarta (Figure 1). The four areas include the campus area, vacant land, housing, and rice fields. The research method for determining the area uses the observation method^[11]. Meanwhile, to determine the plot in sampling using a purposive^[12]. The area of each sampling area is 1750 m² (35 m x 50 m).

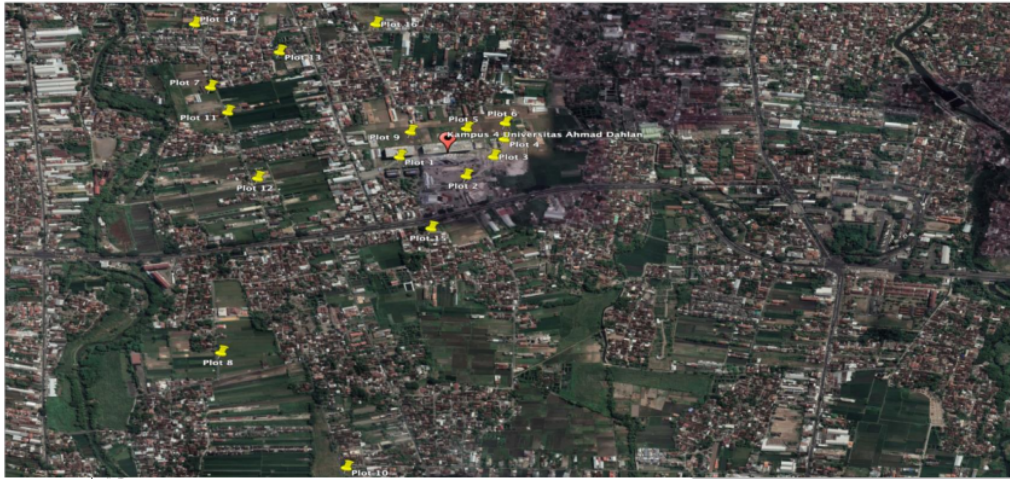


Figure 1. Map of sampling plot^[13]

2. Bees collection

Sampling was carried out at 07.00 - 11.00 and continued in the afternoon at 15.00 - 17.00. The choice of time for sampling is based on the active time of the bees^[14,15,16]. Bees are caught using a sweep net. Sweep nets were swung back and forth within each plot in the study area to catch flying bees. The bees that have been caught are then put into a bottle filled with 70% alcohol. The bees that were caught were then brought to the Ecology and Systematics Research Laboratory, Ahmad Dahlan University for further identification. Sample identification was carried out by comparing the morphological characteristics of the bees obtained with the book from Mason et al.^[17] and the journal of Francoy et al.^[18], Rattanawanee et al.^[19]; and Al-Ghamdi et al.^[20]

4. Data analysis

Data analysis used in this study was descriptive analysis to describe the bees found. The second analysis used in this research is inferential analysis. Inferential analysis was used to calculate the diversity level of bees using the Shannon-Wiener diversity index. In addition to calculating the diversity value, bee dominance was also calculated using the Simpson dominance index.

The formula of the Shannon-Wiener Diversity Index (H') according to Sarma and Das^[21], is as follows:

Note:

H' = Shannon-Weiner diversity index

ni = The number of individuals of each species

N = Number of individuals of all species

The Shannon-Weiner Species Diversity Index criteria according to Prechzsch^[22] were divided into 3, namely:

H' < 1 : Low diversity

1 ≤ H' ≤ 3 : Moderate diversity

H' > 3 : High diversity

Simpson's Dominance Index (D) according to Thukral et al.^[23] was calculated by the following formula:

$$D = \sum (ni/N)^2$$

19

Note:
 D = Simpson dominance index
 ni= The number of individuals of each species
 N = Number of individuals of all species

According to Odum^[24], the range of dominance index values is as follows:

0,00 < C < 0,50 : Low dominance
 0,50 < C < 0,75 : Moderate dominance
 0,75 < C < 1,00 : High dominance

III. RESULT AND DISSCUSSION

i. The diversity level (H') and dominance of bees in the campus 4 UAD area, rice fields, vacant land and housing, Banguntapan District, DI Yogyakarta

Based on the results of the research that has been done, the highest diversity index (H') is found in vacant land areas with a value of 1.52 and the lowest in paddy fields with a value of 1.05. The highest dominance value is in the residential area, namely 0.53 and the lowest is in the vacant land area with a value of 0.28 (Table 1).

Table 1. Diversity (H') and dominance (D) index values of bee species at campus 4 UAD, rice fields, vacant land, and housing, Banguntapan District, DI Yogyakarta

Location	H'	D
Campus 4 UAD	1,24	0,42
Rice field	1,05	0,50
Vacant land	1,52	0,28
Housing	1,18	0,53

If we look at the diversity index values at the four sampling location the four study areas have moderate diversity index values ($1 \leq H' \leq 3$). However, of the four areas, vacant land has the highest H' value compared to other areas. This is because the vacant land used in this study is abandoned land near urban areas. Vacant land near urban areas is usually overgrown with flowering plants and wild plants. According to Gardiner *et al.*,^[25] bees are more commonly found in vacant lands that are close to cities, because these vacant lands can be used as habitats or nesting sites. The vacant land where this research was conducted has many flowering plants and is also far from human activity, so bees are found in abundance in the area. This is in accordance with the statement from Buadu *et al.*^[26]; Papanikolau *et al.*^[27]; and Addi and Bareke^[28] that bees will be more commonly encountered if there are lots of flowering plants and away from human activity. According to Strane and Trippdi^[29] the existence of human-caused land changes, especially the conversion of land to agriculture and settlements, has made some bees difficult to find. In addition, land clearing also results in the loss of some of the biodiversity found in the area^[30]. The transition of land from vacant land to rice fields or settlements will certainly reduce the number of types of flowering plants that can be used by bees as a food source. The less the number of types of food that bees can get, the fewer bees that can be found in that area. However, if the land still contains flowering plants, whether they are flowering wild weeds or cultivated plants, then bees can still be found in that area even though the number of species found will be different from land where there is still no disturbance in the form of land conversion from humans.

Regardless of this statement, the campus area which is dense with human activity can still be found in abundant numbers of bees. Even though human activity is more dense in the campus area, bees can still survive if there are lots of flowering plants which are a source of bee food^[31]. The campus and housing areas have diversity index values that are not much different from the other two areas, namely 1.24 and 1.18. The H' value obtained is due to land conversion which was originally natural land into a campus and housing area^[32], which has an impact on bee habitat. This is confirmed by the statement from Otto *et al.*^[33] and Schroeder *et al.*^[34], that changes in bee habitat caused by land conversion will affect the availability of habitat used by bees to survive.

In general, bee habitat that has been disturbed will result in few bees being found in the area^[35], even to the point where bees are not found in the area^[36]. However, in the campus and housing areas, almost all types of bees were found in these two areas. This can happen because bees can survive in areas that have changed land use^[37], provided that there are flowering plants around the area as a source of food and also habitat for bees. Habitat for bees in areas affected by land use change will have a major impact on bees, but this can be overcome if the habitat has flowering plant resources. The availability of abundant amounts of flowers as a source of bee food can cause bees to visit more often and be found at that location^[38].

Campus and housing areas certainly have denser human activity than paddy fields^[39], but from the research results obtained, the diversity index values in these two areas are higher than the paddy fields. The factors causing the diversity index values in the campus and housing areas to be higher than the rice fields could occur because the flowering plants found in the two areas were more diverse and more numerous than the rice fields, so that individuals and types of bees were found in the two areas more the. According to Hodgson *et al.*^[40], bees can survive in dense human activities as long as there are flowering plants.

Another factor that causes the H' value in campus and housing areas to be higher than in paddy fields is that the flowers visited are more attractive to bees to suck nectar from these flowers. Interestingly the flowers visited by bees are from the color of the flowers, shape, smell, and also the availability *pollen* in these flowers^[41]. The campus and residential areas have cherry, embarrassed daughter, antap-antapan, israel grass, euphorbia, bougenvile, and soka. Cherry flowers are flowers that have a small shape and are white in color which are a source of food for the genera *Apis* and *Xylocopa*^[42]. The shy princess flower has a lot of pollen available so it can attract bees^[43]. Antap-antapan flowers, israel grass, euphorbia, bougenvile, and soka have an attraction in the form of striking flower colors that are purple, white, red so that they can attract bees to visit these flowers^[44]. The paddy fields only have rice flowers, chilies, and kersen. The three flowers have a small shape and 2 white in color, in contrast to the campus and housing areas which have various types and colors of flowers so that the bee diversity index values in the three areas are different.

Bees contribute greatly to pollinating plants in agricultural areas^[45]. However, the H' value in paddy fields has the lowest value among the other four areas (1.05). This could be due to the fact that there are not so many flowering plants in the paddy fields which are a source of bee food. The lack of agricultural crops and flowering plants around agricultural areas is one of the factors in the decline in bee diversity. Bees are very dependent on the availability of flowering plants, because they are a source of food to sustain their lives^[46]. The availability of resources in the form of flowers is also one of the main factors determining the level of diversity of bees in an ecosystem^[47]. The more flowering plants, the more types and abundance of bees in that location.

Apart from the availability of flowering plants, other factors that cause low diversity and bee populations in agricultural areas are human activities that use insecticides to deal with pest problems. The use of insecticides will certainly affect the diversity and abundance of insects^[48], especially bees^[49]. According to research from Kovács *et al.*^[50], excessive use of insecticides will actually reduce the bee population in an ecosystem, which will cause local extinction of bees in that ecosystem^[51]. Practically insecticides in controlling pest populations are still the main choice of farmers so far in controlling pest populations and attacks, especially in rice plants. Likewise, farmers in the rice fields used in this study, they also still use insecticides to control populations and pest attacks on rice plants.

The insecticide used by farmers in the paddy fields used in this study was *brand* containing the active ingredient *fipronil*. *Fipronil* is an active compound that is highly toxic to pollinating insects, especially bees, and can even cause death. This is confirmed by the statement from Kovács *et al.*^[50], that exposure to insecticides containing *fipronil* in agricultural areas caused bee populations to decline. This is confirmed by research from Holder *et al.*^[52] who found mass death of bees on sunflowers in France during the 1990s due to *fipronil*.

Even though the rice fields where the research was carried out still used insecticides to control populations and pest attacks on rice, the results showed that almost all types of bees from the five types of bees found in this study were found in the rice fields. This could be due to the fact that bees can still collect pollen or nectar from plants exposed to insecticides, as long as the flowering plants are exposed to insecticides in low doses (0.1 – 1%)^[53]. This low exposure will not cause the bees to die directly, but the bees will accumulate these substances in their bodies^[54]. accumulation of *fipronil* continuous^[55].

Bees can indirectly overcome this by detoxifying the poison using its detoxification system which consists of enzymes, such as P450 *monooxygenase*, *glutathione transferase*, and *carboxylesterase* by changing or coding metabolic enzymes, metabolizing quercetin which is a flavonoid contained in nectar^[56]. However, it is possible that bees can still experience death if they continue to look for nectar in plants contaminated with *fipronil*^[57]. Besides affecting individual bees, *fipronil* also affects bee colonies^[58]. Bee colonies that are continuously polluted by *fipronil* can cause a reduction in the age of the colony. The existence of behavioral and physiological changes in the bodies of larvae found in colonies can interfere with their survival^[52] and affect the vitality of the colony.

In addition to calculating the H' value, this study also calculated the Simpson dominance index (D) value of bees found in the UAD 4 campus area, vacant land, rice fields and housing. The highest D value was obtained in the residential area of 0.53 and the lowest in the vacant land area of 0.28. Judging from the dominance index values of the four areas, the dominance index values for housing and rice fields are categorized as moderate, namely 0.50 < C < 0.75. The value of D in the campus area and vacant land is categorized as low (0.00 < C < 0.50) with a D value of 0.42 and 0.28. The high dominance index value in residential areas can be caused by bees dominating the area. The dominant bee in the residential area is *A. cingulata*. These bees were the most dominating in terms of abundance compared to the other three bee species found in residential areas. This can occur due to the presence of flowering plants that attract bees from the genus *Amegilla* in residential areas. The flowering plant that attracts bees of the genus *Amegilla* is the cherry. Kersen has the pollen needed by *Amegilla*^[59] and also the color of the cherry blossoms is white which is the favorite color of *Amegilla* bees^[60]. Although bees from the genus *Amegilla* like

white flowers, these bees do not visit euphorbia, bougenvile or soka flowers because the flowers found on these plants in residential areas are not white. In addition, generally bees from the genus *Amegilla* prefer to pollinate vegetable plants such as the Solanacea or Cucurbitacea families rather than ornamental plants^[61].

The dominance index value in paddy fields is moderate with a value of 0.50. This is because there are bees that dominate in the area. The dominant bees in the paddy field are *A. cingulata* and *X. aestuan*. The two bees dominated the paddy fields compared to the other three types found in the paddy fields. This is because in the rice fields there are chili and cherry plants which are a source of food for *A. cingulata* and *X. aestuan*. The chili plant has white flower color and is a vegetable plant which is one of the favorite food sources for *A. cingulate*^[62]. Apart from chilies, there is also a cherry plant which has white flowers which are also a favorite flower for *A. cingulata* and *X. aestuan*^[63]. Even though the cherry trees are visited by these two types of bees, there is no competition between the two bees because the cherry plants produce more flowers on each tree so that they do not cause competition in finding nectar or pollen.

Dominance index values in the campus area and vacant land are low ($0.00 < C < 0.50$) compared to residential areas and paddy fields. This is because the five types of bees have almost the same number of individuals in the two areas. The bees that are often found on campus and vacant land are from the genus *Xylocopa*. This is because in the vacant land area and campus there are cherry plants which are a source of food for bees from the genus *Xylocopa*. Both areas also found bees of the type *A. cerana*, *A. mellifera* and *A. cingulata* with almost the same number of individuals. This could be due to the presence of several flowering plants and flowering wild plants in the two areas. Flowering wild plants that were found in both areas were shy daughter, antap-antapan, and israel grass which is a source of food for the bees of the Apidae family.

Vegetation of flowering plants in these two areas is evenly distributed and widely spread so that bees visit both areas frequently and more. Not only is the distribution of flowering plants a determining factor in the diversity and dominance of bees in an area, but also the even distribution of these flowering plants causes a more even distribution of the types of bees that visit. As a source of food for bees, flowering plants that are evenly distributed will make it easier for bees to find nectar, causing no dominance of just one type of bee in a particular location. The dominance index value itself is inversely proportional to the diversity index value^[64], if the diversity index value in an ecosystem is high then the dominance index value will be low in that ecosystem, and vice versa.

IV. CONCLUSION

The conclusions of this study were: 1) The diversity of bees in the campus area of 4 UAD, rice fields, vacant land, and housing in Banguntapan District, DI Yogyakarta showed a moderate level of diversity and 2) The type of bee with the most number of individuals was *Xylocopa aestuan* (118 individuals.) and the fewest *Apis mellifera* (7 individuals).

REFERENCES

- [1] Schowalter, T.D., Noriega, J.A., & Tschamtko, T. (2017). Insect effects on ecosystem services – introduction. *Basic and Applied Ecology*, 26(6), 1-31.
- [2] Susilawati, Buchori, D., Rizali, A., & Pudjianto. (2017). Pengaruh keberadaan habitat alami terhadap keanekaragaman dan kelimpahan serangga pengunjung bunga mentimun. *Jurnal Entomologi Indonesia*, 14(1), 152–161.
- [3] Izakovicova, Z., Mederly, P., & Petrovic, F. (2017). Long-term land use change driven by urbanization and their environmental effects (example of Trnava City, Slovakia). *Sustainability*, 9(1553), 1-28.
- [4] Sidra, S., Ali, Z., & Chaudhry, M.N. (2013). Avian diversity at New Campus of Punjab University in relation to land use change. *Pakistan J. Zool.*, 45(4), 1069-1082.
- [5] Davison, C.W., Rahbek, C., & Morueta-Holme, N. (2021). Land-use change and biodiversity: challenges for assembling evidence on the greatest threat to nature. *Global Change Biology*, 27(21), 5414-5429.
- [6] Wicaksana, R.Y.M., Setyawan, D., Resdianningsih, K., Al-Isnaeni, B.A., Subagja, R.A., & Utami, I. (2020). Jenis-jenis burung di kawasan Kampus 4 Universitas Ahmad Dahlan Yogyakarta. *Jurnal Riset Daerah*, XX(3), 3745-3766.
- [7] Indraswarii, A.G.M., Atmowidi, T., & Kahono, S. (2016). Keanekaragaman, aktivitas kunjungan, dan keefektifan lebah penyerbuk pada tanaman tomat (*Solanum lycopersicum* L: Solanaceae). *Jurnal Entomologi Indonesia*, 13(1), 21-29.
- [8] Kusuma, D. & Doi, D. (2020). Study of biodiversity of wasps and bees in Kota, Rajasthan, India. *Journal of Entomology and Zoology Studies*, 8(6), 807-810.
- [9] Putra, I.L.I., Putri, T.A., & Setiawan, H. (2021). Diversity of butterflies (Hexapoda: Lepidoptera: Rhopalocera) around campus 4 of Universitas Ahmad Dahlan. *Jurnal Riset Biologi dan Aplikasinya*, 3(2), 54-62.
- [10] Putra, I.L.I., Setiawan, H., & Suprihatini, N. (2021). Keanekaragaman jenis semut (Hymenoptera: Formicidae) di sekitar Kampus 4 Universitas Ahmad Dahlan Yogyakarta. *Biospecies*, 14(2), 20-30.

- [11] Riyanto, Y. (2010). *Metodologi Penelitian Pendidikan*. SIC: Surabaya.
- [12] Sugiyono. (2016). *Metode Penelitian Kuantitatif, Kualitatif dan R&D*. PT Alfabet: Bandung.
- [13] Google Earth. (2021). Peta Kampus 4 Universitas Ahmad Dahlan Yogyakarta. https://earth.google.com/web/@7.8332349,110.3831212,1242.81662358a,0d,35y,0h,0t,0r?utm_source=earth7&utm_campaign=vine&hl=en. Diakses 27 Oktober 2021.
- [14] Abou-Shaara, H.F. (2014). The foraging behavior of honey bees, *Apis mellifera*: a review. *Veterinari Medicina*, 59(1), 1-10.
- [15] Clarke, D. & Robert, D. (2018). Predictive modelling of honey bee foraging activity using local weather conditions. *Apidologie*, 49, 386-396.
- [16] Ngo, T.N., Wu, K.C., Yang, E.C., & Lin, T.T. (2019). A real-time imaging system for multiple honey bee tracking and activity monitoring. *Computers and Electronics in Agriculture*, 163.
- [17] Mason, L., Sayre-Chavez, B., O'Brien, C., & Seshadri, A. (2022). *A Beginner's Field Guide to Identifying Bees*. Colorado State University Extension: Colorado.
- [18] Francoy, T.M., Wittmann, D., Drauschke, M., Muller, S., Steinhage, V., Bezerra-Laure, M.A.F., De Jong, D., & Goncalves, L.S. (2008). Identification of Africanized honey bees through wing morphometrics: two fast and efficient procedures. *Apidologie*. 39, 488-494.
- [19] Strange, J.P. & Tripodi, A.D. (2019). Characterizing bumble bee (*Bombus*) communities in the United States and assessing a conservation monitoring method. *Ecol. Evol.* 9, 1061-1069.
- [20] Msofe, N.K., Sheng, L., & Lyimo, J. (2019). Land use change trends and their driving forces in the Kilombero Valley Floodplain, Southeastern Tanzania. *Sustainability*, 11(505), 1-27.
- [21] Al-Ghamdi, A.A., Al-Khulaidi, A., Al-Sagheer, N.A., Nuru, A., & Tadesse, Y. (2019). Identification, characterization and mapping of honey bee flora of Al-Baha region of Saudi Arabia. *J. of Environmental Biology*, 41, 613-622.
- [22] Rattanawanee, A., Chanchao, C., & Wongsiri S. 2010. Gender and species identification of four native honey bees (Apidae: *Apis*) in Thailand based on wing morphometric analysis. *Conservation Biology and Biodiversity*, 103(6), 965-970.
- [23] Sarma, P. & Das, D. (2015). Application of Shannon's Index to study diversity with reference to census data of Assam. *Asian J. of Management Research*, 5(4), 634-643.
- [24] Prechszsch, H. (2009). *Forest Dynamics, Growth and Yield: From Measurement to Model*. Springer-Verlag, Berlin, Pp, 279- 283.
- [25] Thukral, A.K., Bhardwaj, R., Kumar, V., & Sharma, A. (2019). New indices regarding the dominance and diversity of communities, derived from sample variance and standard deviation. *Heliyon*, 5, 1-15.
- [26] Odum, E.P. (1993). *Dasar-dasar Ekologi*. Diterjemahkan dari *Fundamental of Ecology* oleh Samingan, T. Gadjah Mada University Press: Yogyakarta.
- [27] Gardiner, M.M., Burkman, C.E., & Prajzner, S.P. (2013). The value of urban vacant land to support arthropod biodiversity and ecosystem services. *Environmental Entomology*, 42(6), 1123-1136.
- [28] Buadu, E.J., Kwapong, P.K., & Combey, R. (2017). Variation in bee abundance and diversity across subzones in the forest savannah transition zone of Ghana. *J. of Ecology*, 4(3), 1-13.
- [29] Papanikolaou, A.D., Kuhn, I., Frenzel, M., Kuhlmann, M., Poschlod, P., Potts, S.G., Roberts, S.P.M., & Schweiger, O. (2017). Wild bee and floral diversity co-vary in response to the direct and indirect impacts of land use. *Ecosphere*, 8(11), 1-14.
- [30] Addi, A. & Bareke, T. (2019). Floral resources diversity and vegetation types important for honeybees in Ethiopia. *Asian J. of Forestry*, 3(2), 64-68.
- [31] Hall, D.M., Camilo, G.R., Tonietto, R.K., Ollerton, J., Ahm , K., Arduser, M., & Threlfall, C.G. (2017). The city as a refuge for insect pollinators. *Conservation Biology*, 31(1), 24-29.
- [32] Gill, R.J., Baldock, K.C.R., Brown, M.J.F., Cresswell, J.E., Dicks, L.V., & Fountain, M.T. (2016). *Protecting an Ecosystem Service: Approaches to Understanding and Mitigating Threats to Wild Insect Pollinators*. In *Advances in Ecological Research*. (ed. Guy, W. and David, A.B.). Academic Press: Cambridge. Pp, 135-206.
- [33] Otto, C.R.V., Roth, C.L., Carlson, B.L., & Smart, M.D. (2016). Land-use change reduces habitat suitability for supporting managed honey bee colonies in the Northern Great Plains. *PNAS*, 113(37), 10430-10434.
- [34] Schroeder, H., Grab, H., Kessler, A., & Poveda, K. (2021). Human-mediated land use change drives intraspecific plant trait variation. *Frontiers in Plant Science*, 11, 1-16.
- [35] Fortel, L., Henry, M., Guilbaud, L., Guirao, A.L., Kuhlmann, M., Mouret, H., & Vaissiere, B.E. (2014). Decreasing abundance, increasing diversity and changing structure of the wild bee community (Hymenoptera: Anthophila) along an urbanization gradient. *PLOS ONE*, 9(8), 1-12.
- [36] Ekroos, J., Kleijn, D., Batry, P., Albrecht, M., Bldi, A., Blthgen, N., & Smith, H.G. (2020). High land-use intensity in grasslands constrains wild bee species richness in Europe. *Biological Conservation*, 241, 1-8.
- [37] Baldock, K.C., Goddard, M.A., Hicks, D.M., Kunin, W.E., Mitschunas, N., Osgathorpe, L.M., & Memmott, J. (2015). Where is the UK's pollinator biodiversity? The importance of urban areas for flower-visiting insects. *Proceedings of the Royal Society B: Biological Sciences*, 282(1803), 1-10.

- [38] Wratten, S.D., Gillespie, M., Decourtye, A., Mader, E., & Desneux, N. (2012). Pollinator habitat enhancement: benefits to other ecosystem services. *Agriculture, Ecosystems & Environment*, 159, 112-122.
- [39] Ramírez, V.M., Calvillo, L.M., & Kevan, P.G. (2013). *Effects of Human Disturbance and Habitat Fragmentation on Stingless Bees*. In *Pot-Honey*. Springer: New York, Pp. 269-282.
- [40] Hodgson, J.A., Moilanen, A., Wintle, B.A., & Thomas, C.D. (2011). Habitat area, quality and connectivity: striking the balance for efficient conservation. *Journal of Applied Ecology*, 48(1), 148-152.
- [41] Lestari, M.M., Widhiono, I., & Sudiana, E. (2014). Keragaman serangga penyerbuk pada pertanaman strawberry yang diselingi dengan tanaman *Borreria laevicaulis*. *Scripta Biologica*, 1(2), 157-160.
- [42] Hawkeswood, T.J. & Sommung, B. (2016). Pollination of *Muntingia calabura* L. (Muntingiaceae) by native bees in Bangkok, Thailand. *Calodema*, 421, 1-6.
- [43] Jayuli, M., Junus, M., & Nursita, W. (2018). Pengaruh ketinggian terhadap diameter polen lebah madu (*Apis cerana*) di Kabupaten Malang. *Journal of Tropical Animal Production*, 19(1), 9-21.
- [44] Kurniawati, N. & Martono, E. (2015). Peran tumbuhan berbunga sebagai media konservasi Artropoda musuh alami. *Jurnal Perlindungan Tanaman Indonesia*, 19(2), 53-59.
- [45] Martinello, M., Manzinello, C., Borin, A., Avram, L.E., Dainese, N., Giulato, I., & Mutinelli, F. (2019). A survey from 2015 to 2019 to investigate the occurrence of pesticide residues in dead honeybees and other matrices related to honeybee mortality incidents in Italy. *Diversity*, 12(15), 1-16.
- [46] Gerner, E.E. & Sargent, R.D. (2022). Local plant richness predicts bee abundance and diversity in a study of urban residential yards. *Basic and Applied Ecology*, 58, 64-73.
- [47] Isbell, F., Adler, P.R., Eisenhauer, N., Fomara, D., Kimmel, K., Kremen, C., & Scherer-Lorenzen, M. (2017). Benefits of increasing plant diversity in sustainable agroecosystems. *Journal of Ecology*, 105(4), 871-879.
- [48] Hallman, C.A., Foppen, R.P., van Turnhout, C.A., de Kroon, H., & Jongejans, E. (2014). Declines in insectivorous birds are associated with high neonicotinoid concentrations. *Nature*, 7509, 341-343.
- [49] Goulson, D., Nicholls, E., Botías, C., & Rotheray, E.L. (2015). Bee declines driven by combined stress from parasites, pesticides, and lack of flowers. *Science*, 347(6229).
- [50] Kovács-Hostyánszki, A., Espíndola, A., Vanbergen, A.J., Settele, J., Kremen, C., & Dicks, L.V. (2017). Ecological intensification to mitigate impacts of conventional intensive land use on pollinators and pollination. *Ecology Letters*, 20(5), 673-689.
- [51] Baron, G.L., Jansen, V.A., Brown, M.J., & Raine, N.E. (2017). Pesticide reduces bumblebee colony initiation and increases probability of population extinction. *Nature Ecology & Evolution*, 1(9), 1308-1316.
- [52] Holder, P.J., Jones, A., Tyler, C.R., & Cresswell, J.E. 2018. Fipronil pesticide as a suspect in historical mass mortalities of honey bees. *Proceedings of the National Academy of Sciences*, 115(51), 13033-13038.
- [53] Long, E.Y. & Krupke, C.H. 2016. Non-cultivated plants present a season-long route of pesticide exposure for honey bees. *Nature communications*, 7(1), 1-12.
- [54] Berenbaum, M.R. & Johnson, R.M. (2015). Xenobiotic detoxification pathways in honey bees. *Current Opinion in Insect Science*, 10, 51-58.
- [55] Nicodemo, D., Maioli, M.A., Medeiros, H.C., Guelfi, M., Balieira, K.V., De Jong, D., & Mingatto, F.E. (2014). Fipronil and imidacloprid reduce honeybee mitochondrial activity. *Environmental Toxicology and Chemistry*, 33(9), 2070-2075.
- [56] Rand, E.E.D., Smit, S., Beukes, M., Apostolides, Z., Pirk, C.W., & Nicolson, S.W. (2015). Detoxification mechanisms of honey bees (*Apis mellifera*) resulting in tolerance of dietary nicotine. *Scientific Reports*, 5(1), 1-11.
- [57] Jacob, C.R., Soares, H.M., Nocelli, R.C., & Malaspina, O. (2015). Impact of fipronil on the mushroom bodies of the stingless bee *Scaptotrigona postica*. *Pest Management Science*, 71(1), 114-122.
- [58] Sanchez-Bayo, F. & Goka, K. (2014). Pesticide residues and bees—a risk assessment. *PLOS ONE*, 9(4), 1-16.
- [59] Suwannapong G, Benbow ME, Nieh JC. 2011. *Biology of Thai Honeybees: Natural History and Threats. Chapter 1*. In: Florio RM (ed). *Bees: Biology, Threats and Colonies*. Nova Science Publishers Inc. Pp. 1-103.
- [60] Kumar, K.K.P., Dinesh, N.D., & Murari, S.K. (2019). Synthesis of CuO and Ag doped CuO nanoparticles from *Muntingia calabura* leaf extract and evaluation of their antimicrobial potential. *International J. of Nano and Biomaterials*, 8(3-4), 228-252.
- [61] Sandeep, K.J. & Muthuraman, M. (2018). Behavior of blue banded bees, *Amegilla zonata* L (Apidae: Hymenoptera). *J. of Entomology and Zoology Studies*, 6(5), 2365-2370.
- [62] Hanyala, A.F., Sahabuddin, & Pitopang, R. (2016). Jenis lebah dan peranannya dalam meningkatkan produksi biji tanaman timun (*Curcumis sativus* L.) di desa Wuasa Kecamatan Lore Utara Kabupaten Poso. *Biocelbes*, 10(1), 91-105.
- [63] Agussalim, A.A., Umami, N., & Budisatria, I.G.S. (2017). Variasi jenis tanaman pakan lebah madu sumber nektar dan polen berdasarkan ketinggian tempat di Yogyakarta. *Buletin Peternakan*, 41(4), 448-460.
- [64] Adelusi, S.M., Ada, R.T., & Omodu, E.A. (2018). Diversity and abundance of insects species in Makurdi, Benue State, Nigeria. *International J. of New Technology and Research*, 4(6), 52-57.

HASIL CEK_Jurnal PIJAR MIPA

ORIGINALITY REPORT

12%

SIMILARITY INDEX

11%

INTERNET SOURCES

6%

PUBLICATIONS

2%

STUDENT PAPERS

PRIMARY SOURCES

1	journal.unesa.ac.id Internet Source	4%
2	ejournal.uin-malang.ac.id Internet Source	1%
3	Submitted to Padjadjaran University Student Paper	1%
4	ojs.uma.ac.id Internet Source	1%
5	aip.scitation.org Internet Source	1%
6	journal.walisongo.ac.id Internet Source	<1%
7	Pollination Biology, 2012. Publication	<1%
8	www.bioflux.com.ro Internet Source	<1%
9	hortikultura.litbang.pertanian.go.id Internet Source	<1%

10	periodicos.uefs.br Internet Source	<1 %
11	R Diana, P Matus, Syahrudin, Karyati, M Hendra, R Melsitiara. "Species diversity and estimation of carbon stock in abandoned shrimp pond of mangrove ecosystem in East Kalimantan", IOP Conference Series: Earth and Environmental Science, 2021 Publication	<1 %
12	ojs.omniakuatika.net Internet Source	<1 %
13	Pot-Honey, 2013. Publication	<1 %
14	link.springer.com Internet Source	<1 %
15	ojs.pps.unsri.ac.id Internet Source	<1 %
16	researchrepository.murdoch.edu.au Internet Source	<1 %
17	www.journal.uniku.ac.id Internet Source	<1 %
18	www.researchgate.net Internet Source	<1 %
19	C Octavina, N M Razi, M Agustiar, R Sakinah, M R Fazillah, A Sahidin. "Biological community	<1 %

structure in Krueng Sarah River, Aceh Besar District", IOP Conference Series: Earth and Environmental Science, 2021

Publication

Exclude quotes On

Exclude matches Off

Exclude bibliography On