

# Cek 5\_Correlation between fine particulate matter air pollution and under-five children mortality in Indonesia: A secondary data analysis of WHO Global Health Observatory

*anonymous marking enabled*

---

**Submission date:** 11-Mar-2024 10:06PM (UTC-0700)

**Submission ID:** 2318358621

**File name:** Artikel\_PHI\_Stikbar.docx (319.37K)

**Word count:** 4376

**Character count:** 25446

# Correlation between fine particulate matter air pollution and under-five children mortality in Indonesia: A secondary data analysis of WHO Global Health Observatory

Sani Rachman Soleman<sup>1\*</sup>, Muchamad Rifai<sup>2</sup>, and Meiyla Farika Indah<sup>3</sup>

<sup>1</sup>Department of Public Health, Faculty of Medicine, Universitas Islam Indonesia, Yogyakarta, Indonesia

<sup>2</sup>Department of Public Health, Faculty of Public Health, Universitas Ahmad Dahlan, Yogyakarta, Indonesia

<sup>3</sup>Department of Public Health, Faculty of Public Health, Universitas Islam Kalimantan, South Kalimantan, Indonesia

DOI: <https://doi.org/xxx>

Received: xx xxxxx 2022 | Revised: xx xxxxx 2022 | Accepted: xx xxxxx 2022

Corresponding author:

**Sani Rachman Soleman**

Department of Public Health, Faculty of Medicine,  
Universitas Islam Indonesia, Yogyakarta, Indonesia

Email: [sani.rachman@uii.ac.id](mailto:sani.rachman@uii.ac.id)

Copyright: © 2023 the Author(s). This is an open-access article distributed under the terms of the Creative Commons Attribution Non-Commercial License, which permits unrestricted non-commercial use, distribution, and reproduction in any medium provided the original work is properly cited.

## Abstract

**Background:** Fine particulate matter (PM<sub>2.5</sub>) is an environmental factor contributing to the death rate.

However, few studies have demonstrated the association between PM<sub>2.5</sub> and the under-five mortality rate.

**Objective:** To determine the correlation between PM<sub>2.5</sub> and under-five children mortality in Indonesia.

**Methods:** A secondary data analysis of the WHO Global Health Observatory on Environmental Pollution and Children Mortality during 2012-2016 was conducted. The environmental pollution was measured by PM<sub>2.5</sub> levels (µg/m<sup>3</sup>) in rural, urban, and both areas. Mortality data were categorized by specific causes— meningitis/encephalitis, acute lower respiratory infection, diarrhoeal diseases, tetanus, prematurity, birth asphyxia, and congenital anomalies. Data were analyzed using Mann-Whitney and Spearman correlations. **Results:** The PM<sub>2.5</sub> total concentration in urban areas was greater than in rural areas for four years (18.4±1.19 vs. 15.4±1.1,  $p = 0.016$ ). Prematurity, acute lower respiratory infection, and birth asphyxia were the leading causes of under-five mortality. The PM<sub>2.5</sub> concentration in urban and rural areas was significantly associated with an acute lower respiratory infection, tetanus, prematurity, birth asphyxia, and congenital anomalies ( $p < 0.05$ ). Additionally, the PM<sub>2.5</sub> concentration was negatively correlated with tetanus, prematurity, birth asphyxia, and congenital anomalies ( $p < 0.001$ ;  $r = -0.8, -0.8, -0.82, -0.83$ , respectively).

**Conclusion:** PM<sub>2.5</sub> air pollution was correlated with tetanus, prematurity, birth asphyxia, and congenital anomalies from 2012-2016 in Indonesia. Further action is needed to handle the sources of air pollution contamination to preventing under-five mortality in the community.

**Keywords:** PM<sub>2.5</sub>; particulate matter; under-five mortality rate; specific causes; child; Indonesia

## Background

Air pollution has been a significant environmental hazard to the global disease burden for years. The World Health Organization (WHO) in 2021 declared that people are exposed to contaminated air, and

more notably, it is attributable to a 7 million mortality rate worldwide (World Health Organization, 2021a).

One of the most pollutants, PM<sub>2.5</sub>, leads to the ecological risk factor of burden diseases in the population by an estimated three million worldwide mortality (Global Burden of Disease Study results,

2019). World Health Organization (WHO) predicts that greater 90% of worldwide inhabitants are contaminated by PM<sub>2.5</sub> higher than 10 ug/m<sup>3</sup>, surpassing the air quality index for PM<sub>2.5</sub> (World Health Organization, 2021b). It is noted that PM<sub>2.5</sub> can penetrate the human body through inhalation, skin, and ingestion routes. Studies have examined that the health effects of PM<sub>2.5</sub> continued; concentration in urban, rural, and remote areas does not vary from country to country.

20

A recent study shows the global estimation of annual PM<sub>2.5</sub> concentration and trend for 20 years (1998 – 2018) (Hammer et al., 2020). It was illustrated that the trend for worldwide and India was positive ( $0.04 \pm 0.02$  vs.  $1.13 \pm 0.15$   $\mu\text{g}/\text{m}^3/\text{yr}$ ). Conversely, the negative trend occurred in Europe and North America ( $-0.15 \pm 0.03$  vs.  $-0.28 \pm 0.03$   $\mu\text{g}/\text{m}^3/\text{yr}$ ) (Hammer et al., 2020). Those data show that the global concentration of PM<sub>2.5</sub> is still challenging for public health. Residents in rural and urban are the most affected and pose a health risk, as mentioned by Clements et al. (2016) in northeastern Colorado. The study compared the mass concentration and composition of PM<sub>10-2.5</sub> in the Greenly and Denver regions (Clements et al., 2016). The PM<sub>10-2.5</sub> was continuous over three years, from 2009 to 2012. The study's result claimed that Greenly had donated to the highest PM concentration, yet the concentration commonly in Greenly was lower than in Denver. Transportation pollution significantly influences the concentration of PM<sub>10-2.5</sub> in Denver. Notably, the concentration of coarse particulate matter was greater than in settlement areas in both Denver and Greely (Clements et al., 2016).

This global situation makes people in the city and countryside areas prone to disease, as estimated by WHO in 2021 (World Health Organization, 2021b). This report claimed that 93% of children breathe polluted air, posing their health at serious illnesses such as acute lower respiratory infections. This report also claimed that 600,000 children were ill from respiratory infections. In addition, 4.2 million untimely death across the globe was considered caused by ambient air pollution in rural and urban ones (World Health Organization, 2021a). Air pollution, such as PM<sub>2.5</sub> and PM<sub>10</sub>, has become the majority cause of non-communicable diseases in adults and children for years. It is important to note that the PM compositions are nitrates, ammonia, carbon, sodium chloride, water, and dust (World Health Organization, 2021b). The small molecule of

those substances enters the human body through oral, respiratory, and dermal contact, causing intercellular interaction with the immune system. Thus, this mechanism becomes a primary hazard in mortality and morbidity in the vulnerable population, including the elderly and under-five children.

Under-five mortality (UFM) rate captured the quality of health services. However, recent causes are not related to the quality of health services, but several aspects have been identified, such as PM<sub>2.5</sub> and PM<sub>10-2.5</sub>, as environmental hazards (Karimi & Shokrinezhad, 2020). The trend of UFM in Indonesia from 2000-2017 declined gradually, while the highest causes of mortality were premature birth and acute respiratory diseases (Soleman, 2020). Related studies about the concentration of PM<sub>2.5</sub> on UFM in Indonesia are limited. However, exposure to PM<sub>2.5</sub> in Indonesia is massive because sources of contamination have been detected. Thus, this study must disclose the association of PM<sub>2.5</sub> with the incidence of UFM based on WHO's data. This study gives several implications to the policy maker to handle a source of contamination of PM<sub>2.5</sub> in the community to minimize UFM.

## Methods

### Study Design

Secondary data analysis was performed to analyze PM<sub>2.5</sub> on the incidence of caused specific death in under-five children. In addition, this study also compared PM<sub>2.5</sub> concentration in urban and rural to observe temporal trends from 2012 to 2016.

### Data Collection

Global Health Observatory (GHO), managed by World Health Organization (WHO), is a repository of health-related statistical data for 194 member states (<https://www.who.int/data/gho>). It offers over 1000 data indicators on the most prioritized health topic, including environmental pollution and children's mortality rate. Environmental pollution data such as fine PM<sub>2.5</sub> was divided into total concentration, urban and rural. In addition, the UFM rate was divided into meningitis/encephalitis, acute lower respiratory infection, diarrhoeal diseases, tetanus, prematurity, birth asphyxia, and congenital anomalies. Pertussis, malaria, and measles were excluded because the annual rate was zero. The availability date was adjusted based on years of collecting data from

2012-2016. Since the data was accessible to the public, ethical permission was not needed.

### Data Analysis

Mean, standard deviation (SD), and minimum maximum were used to describe the data. The PM<sub>2.5</sub> concentration from 2012-2016 was shown by the graphical 3D bar. Comparison between cause-specific UFM and concentration PM<sub>2.5</sub> was analyzed using Mann-Whitney test, and correlation analysis was conducted using Spearman Correlation with SPSS version 23.

## Results

**Table 1** shows that the most concentrated PM<sub>2.5</sub> was in the urban area. The most common specific cause of UFM was prematurity, acute lower respiratory infection, birth asphyxia, and congenital anomalies. Comparing the total concentration of PM<sub>2.5</sub> with cause-specific mortality found that acute lower respiratory infection, tetanus, prematurity, birth asphyxia, and congenital disorder were statistically

PM<sub>2.5</sub> in urban and suburban Colorado (Clements et al., 2016), showing that peak concentrations of PM<sub>10-2.5</sub> in suburban were generally lower than in urban ones. The concentration in rural and suburban areas is lower than in urban ones. In the city area, where traffic activity was greater than in rural, the average concentration was 14.6 to 19.7 µg/m<sup>3</sup>. During summer and timely autumn, the PM<sub>10-2.5</sub> values were uppermost, while PM<sub>2.5</sub> reached maximum concentration during winter. In both particulates, the corresponding concentration peaked of traffic activity in the morning and afternoon (Clements et al., 2016). A study by He et al. (2022) recorded that the leading cause of the UFM rate from 2009-2019 was low birth weight/ preterm birth, followed by pneumonia, birth asphyxia, and congenital anomalies (He et al., 2022). Similar to this study, in which PM<sub>2.5</sub> predominantly accumulated in the suburban area, the highest incidence of UFM was noncommunicable diseases. However, in this study, which locates in an urban or suburban area, the most affected death and specific age of children were not assigned. Further study is warranted to assess this overlooking aspect in Indonesia.

**Table 1** Distribution PM<sub>2.5</sub> and specific cause UFM rate in Indonesia from 2012-2016

Variables	Mean ± SD	Min-Max	p-value*
<b>PM<sub>2.5</sub> (µg/m<sup>3</sup>) Total</b>			
Urban	16.95±1.13	15.6-19	0.016
Rural	18.40±119	17.1-20.6	
	15.48±1.1	14-17.4	
<b>Cause-specific mortality</b>			
Meningitis/Encephalitis	2447±448.4	1909-3012	0.25
Acute lower respiratory infection	23779±2474.1	20740-26879	0.047
Diarrhoeal diseases	9146±687.9	8275-10053	0.602
Tetanus	248±26.84	215-283	0.009
Prematurity	26190±1730	24080-28438	0.009
Birth Asphyxia	17091±1143	15669-18574	0.009
Congenital	14960±441.3	14365-15490	0.009

\*Mann-Whitney test for comparison PM<sub>2.5</sub> with specific mortality cause. PM = particulate matter. SD = standard deviation

associated. A study reported the concentration of **Figure 1** elucidates that the total PM<sub>2.5</sub> concentration was gradually greater from 2012 to 2016. The highest concentration was found in the urban area at 21 µg/m<sup>3</sup>, compared to the total concentration of PM<sub>2.5</sub>. Furthermore, it is reported that PM<sub>2.5</sub> concentration in India increased by 20% from 1998 to 2018, and in China improved by 16% from 2008 to 2018 (Hammer et al., 2020). Since China surveyed for 10 years, the PM concentration

was greater than India, which performed the survey for 20 years. Both countries gave PM concentration during the survey at 50-100 µg/m<sup>3</sup> (Hammer et al., 2020). However, compared to Indonesia, the PM<sub>2.5</sub> in Indonesia was lower than in both countries. This finding suggested that in developed countries is higher than in developing ones, and evidence proved that the concentration of PM<sub>2.5</sub> exceeds the WHO air quality guideline at 10 µg/m<sup>3</sup>.

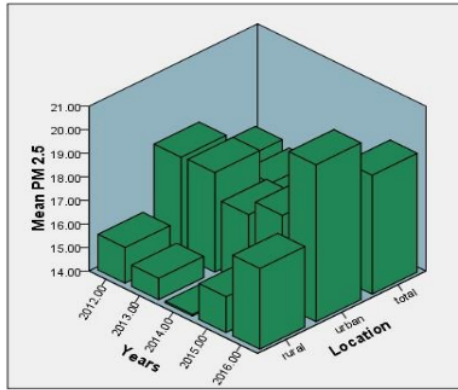


Figure 1 Temporal trend PM<sub>2.5</sub> in Indonesia from 2012-2016

Figure 2 described that R<sup>2</sup> or coefficient determinant found that congenital anomalies were the highest value, followed by tetanus, prematurity, and birth asphyxia at 0.517, 0.462, 0.460, and 0.478, respectively. He et al. (2022) reported that 10 µg/m<sup>3</sup> PM<sub>2.5</sub> concentration increased on 0-1 day, and the corresponding under-five mortality was 1.15% for all-cause, 1.30% for pneumonia, 1.66% for birth asphyxia, 1.66% for congenital anomalies, 2.90% for diarrhoeal diseases, and 7.56% for digestive diseases (He et al., 2022). There is a different result in this study that congenital disorder is the most associated with PM<sub>2.5</sub>. However, this study has varied trends that non-communicable diseases are more related to the value of PM<sub>2.5</sub>, despite being negatively correlated.

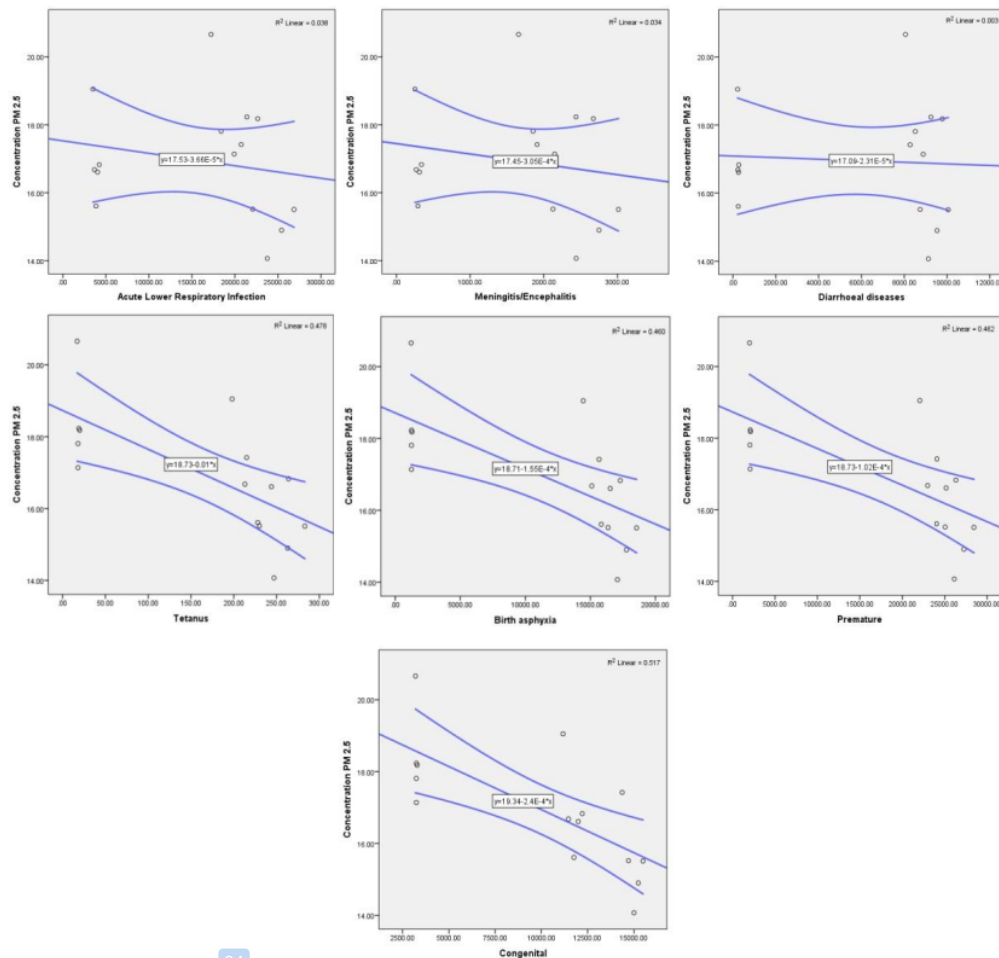


Figure 2 Association between PM<sub>2.5</sub> concentration and under-five children mortality Table 2 Correlation between total concentrations PM<sub>2.5</sub> and specific causes of under-five mortality rate

	PM 2.5	ME	ALRI	DD	Tetanus	Premature	BA	CD
<b>PM 2.5</b>								
<i>r</i>	1	-0.34	-0.42	-0.26	-0.81	-0.80	-0.82	-0.83
<i>p</i>		0.21	0.11	0.34	0.00	0.00	0.00	0.00
<b>ME</b>								
<i>r</i>		1	0.97	0.98	0.227	0.28	0.25	0.36
<i>p</i>			0.00	0.00	0.416	0.30	0.31	0.18
<b>ALRI</b>								
<i>r</i>			1	0.95	0.32	0.37	0.35	0.48
<i>p</i>				0.00	0.24	0.16	0.19	0.69
<b>DD</b>								
<i>r</i>				1	0.15	0.19	0.17	0.26
<i>p</i>					0.59	0.48	0.52	0.33
<b>Tetanus</b>								
<i>r</i>					1	0.99	0.99	0.93
<i>p</i>						0.00	0.00	0.00
<b>Premature</b>								
<i>r</i>						1	0.99	0.96
<i>p</i>							0.00	0.00
<b>BA</b>								
<i>r</i>							1	0.94
<i>p</i>								0.00
<b>CD</b>								
<i>r</i>								1
<i>p</i>								

*N* for all variables = 15; *r* = a coefficient correlation; *p* = the value for the spearman correlation test. ME = meningitis/encephalitis; ALRI = acute lower respiratory infection; DD = a diarrhoeal disease; BA = birth asphyxia; CD = congenital disease

traffic activity and industrialized sources from gasoline and diesel engines. Hence the component of PM<sub>2.5</sub> is Fe, Pb, and Zn.

## Discussion

PM<sub>2.5</sub> have been documented in urban and rural area. Several studies declared that the PM<sub>2.5</sub> concentration in rural or urban areas depends on the source of activities (Clements et al., 2016; Kundu & Stone, 2014). In the agricultural area, unpaved road activities and rural sites significantly increased crustal material such as silicon and aluminum. Meanwhile, urban locations boosted secondary aerosol and combustion levels such as nitrate, sulfate, ammonium, and organic and elemental carbon. On the other hand, industrialized regions knowingly had the greatest PM<sub>2.5</sub>, with trace elements as the most dominant source of hazards as iron, plumbum, and zinc (Kundu & Stone, 2014). Sources of PM<sub>2.5</sub> documented that gasoline and diesel engines have negative health consequences for vehicular emissions. Our study did not evaluate the source of exposure to PM<sub>2.5</sub>; however, in our research, the urban site is the highest concentration compared to rural ones. This finding stated that the concentration of PM<sub>2.5</sub> in Indonesia is likely from

A temporal trend of PM<sub>2.5</sub> has been reported by Southerland et al. (2022). Their study estimated that the annual average population-weighted PM<sub>2.5</sub> from 2000 to 2019 increased more in South East Asia countries than in other WHO regions. In addition, the attributable mortality rate induced by PM<sub>2.5</sub> was meaningfully South East Asia and Western Pacific regions. Both data suggested that the global trend of PM<sub>2.5</sub> in the South East is the most affected by PM<sub>2.5</sub>. In 2019, the PM<sub>2.5</sub> concentration in urban was 35 µg/m<sup>3</sup>, over three times fold than the permissible concentration in WHO guidelines (Southerland et al., 2022). The concentration level in urban sites was 16 µg/m<sup>3</sup>, exceeding the WHO 2005 guideline. This finding is consistent with our study that the trend of PM<sub>2.5</sub> in Indonesia is increased regularly.

Environmental PM<sub>2.5</sub> caused children mortality and disability. Short-range exposure to PM<sub>2.5</sub> was obtained to affect the severity of neonatal and postneonatal death severity, particularly respiratory infection-related mortality (Wang et al., 2019; Yorifuji

et al., 2016). A robust correlation between PM<sub>2.5</sub> and child mortality has also been verified in high-tech countries (Anwar et al., 2021; Goyal et al., 2019). This situation placed developing countries at a high risk of child mortality due to agriculture or farming source of air pollution. Conversely, in high-income countries, industrial pollution is the primary source of air pollution that induces child mortality. Some studies have also recognized that PM<sub>2.5</sub> contamination among pregnant or post-partum women had a severe influence on newborn conditions and consequences in later results, such as preterm delivery, low birth weight, perinatal mortality,<sup>7</sup> and congenital respiratory diseases (Macchi et al., 2021; Proietti et al., 2013; Smith et al., 2017; Yuan et al., 2022; Zhang et al., 2019). Our study has also documented under-five children's death, such as meningitis encephalitis, acute lower respiratory infection, diarrhoeal disease, tetanus, prematurity, birth asphyxia, and congenital anomaly. This study found that non-communicable diseases such as prematurity, birth asphyxia, and congenital disorders are the most associated with air pollution in Indonesia. This result is consistent with previous projects on the contact to PM<sub>2.5</sub> with children mortality.

Our study's primary causes of under-five children's death are prematurity, birth asphyxia, congenital anomaly, and tetanus. It is undoubtedly that noncommunicable diseases are the most affected by PM<sub>2.5</sub>. By handling air pollution, those prevented based diseases could be diminished. World Health Organization 2017 estimated that newborn deaths were caused by prematurity complications (35%), delivery process (24%), including birth asphyxia, and central nervous system infection, including meningitis encephalitis (14%) (Hug et al., 2019). Despite a significant improvement in neonatal life, and reduction of mortality, exposure to air pollution is still a common problem that sometimes could be worst and stimulate the burden of diseases in children.

Prematurity, birth asphyxia, and congenital disorders are global health conditions induced by preterm birth. Our study claimed that prematurity is the primary etiology of death in Indonesia, followed by acute lower respiratory infection and birth asphyxia (Soleman, 2020). Of 15 million preterm newborns delivered yearly, over 1 million babies vanish immediately after delivery, according to a WHO report (Soon, 2012). These conditions are also the

principal sector of passing away in under-five children. Many studies claimed that air smog, including PM<sub>2.5</sub>, had been shown to affect prematurity (Guan et al., 2019; Li et al., 2017; Sun et al., 2015; Wang et al., 2019). The particles in the air across the human body via breathing and ingesting contaminated foods. When pregnant women live and are exposed to the polluted area, it accumulates in the bloodstream and enters the fetus's circulation, resulting from preterm and prematurity. An exciting study in China documented that the greatest death and affliction of very-early birth corresponding to PM<sub>2.5</sub> contamination, with 197100 people every year for daily adjusted life years (DALY), 300.16 persons every year for years lived with disability (YLD) and 196,800 people every year for years life lost (YLL) (Yuan et al., 2022). This finding in China suggested that prematurity complications with suitable treatment decrease mortality caused by early birth.

Tetanus is a life-threatening contagious disease and highly death in children. Our study declared that tetanus is one case under five children mortality attributable to PM<sub>2.5</sub> in Indonesia. A study in China in 2019 showed a rate of neonatal infection, including tetanus years lost with a disability, correlated to PM<sub>2.5</sub> ranked second, while death is the fourth highest (Yuan et al., 2022). This finding is consistent with our data that an increasing infection rate in children correlated with PM<sub>2.5</sub>. However, most papers cited that PM<sub>2.5</sub> is attributed to respiratory infections. Conversely, tetanus infection is scarce. Therefore, further investigation is warranted to investigate the correlation between exposures to PM<sub>2.5</sub> with tetanus in children.

There were restrictions in this secondary data study. First, the PM<sub>2.5</sub> data in Indonesia is limited from 2012 to 2016. To what extent spatial-temporal trend PM<sub>2.5</sub> should be provided with long-period data to disclose the phenomena entirely? The under-five mortality data is not sufficiently detailed and could not adjust the distribution in the countryside and noncountryside areas. Additionally, accurate data about the source of air pollution in urban and rural Indonesia is inadequate. A further prospective study is required to evaluate the correlation between PM<sub>2.5</sub> levels in urban and rural areas and the incidence of the under-five mortality rate in Indonesia, including specific causes of death.

## Conclusion

Using the WHO data on air pollution and under-five disease, this study investigated the under-five mortality rate attributable to PM<sub>2.5</sub> exposure in Indonesia from 2012-2016. The result claimed a high level of PM<sub>2.5</sub> concentration in the city regions compared to rural ones (18.40 vs. 15.48 µg/m<sup>3</sup>). The PM<sub>2.5</sub> level in an environmental sample is negatively and robustly linked with tetanus, prematurity, birth asphyxia, and congenital anomaly. Furthermore, exposure to PM<sub>2.5</sub> regularly increased in rural and urban sites. This situation concluded that PM<sub>2.5</sub> is still necessarily attributable to childhood mortality. This study recommends measures to improve air quality and focus on prevention actions to increase the under-five children's survival.

## Declaration Conflicting Interest

All authors declared that there was no conflict of interest in this manuscript.

## Funding

Proofreading and publication fees of this manuscript were funded by the Faculty of Medicine, Universitas Islam Indonesia.

## Acknowledgment

None.

## Author Contribution

SRS collected the data, analysis, writing, and editing; MR writing and editing; MFI editing and review. All authors approved the final version of the article to be published.

## Author Biography

**Sani Rachman Soleman** is a Lecturer at the Department of Public Health, Faculty of Medicine, Universitas Islam Indonesia, Yogyakarta, Indonesia.

**Muchamad Rifai** is a Lecturer at the Department of Public Health, Faculty of Public Health, Universitas Ahmad Dahlan, Yogyakarta, Indonesia.

**Meiyla Farika Indah** is a Lecturer at the Department of Public Health, Faculty of Public Health, Universitas Islam Kalimantan, South Kalimantan, Indonesia.

## Ethical Consideration

Not applicable.

## References

Anwar, A., Ullah, I., Younis, M., & Flahault, A. (2021). Impact of air pollution (PM<sub>2.5</sub>) on child mortality: Evidence from Sixteen Asian Countries. *International Journal of Environmental Research and Public Health*, 18(12). <https://doi.org/10.3390/ijerph18126375>

- Clements, N., Hannigan, M. P., Miller, S. L., Peel, J. L., & Milford, J. B. (2016). Comparisons of urban and rural PM 10-2.5 and PM 2.5 mass concentrations and semivolatile fractions in northeastern Colorado. *Atmospheric Chemistry and Physics*, 16(11), 7469-7484. <https://doi.org/10.5194/acp-16-7469-2016>
- Global Burden of Disease Study Results. (2019). Global Health Data Exchange. Institute for Health Metrics and Evaluation (IHME), University of Washington.
- Goyal, N., Karra, M., & Canning, D. (2019). Early-life exposure to ambient fine particulate air pollution and infant mortality: Pooled evidence from 43 low- and middle-income countries. *International Journal of Epidemiology*, 48(4), 1125-1141. <https://doi.org/10.1093/ije/dy090>
- Guan, T., Xue, T., Gao, S., Hu, M., Liu, X., Qiu, X., Liu, X., & Zhu, T. (2019). Acute and chronic effects of ambient fine particulate matter on preterm births in Beijing, China: A time-series model. *Science of the Total Environment*, 650(Pt 2), 1671-1677. <https://doi.org/10.1016/j.scitotenv.2018.09.279>
- Hammer, M. S., van Donkelaar, A., Li, C., Lyapustin, A., Sayer, A. M., Hsu, N. C., Levy, R. C., Garay, M. J., Kalashnikova, O. V., Kahn, R. A., Brauer, M., Apte, J. S., Henze, D. K., Zhang, L., Zhang, Q., Ford, B., Pierce, J. R., & Martin, R. V. (2020). Global estimates and long-term trends of fine particulate matter concentrations (1998-2018). *Environmental Science and Technology*, 54(13), 7879-7890. <https://doi.org/10.1021/acs.est.0c01764>
- He, C., Liu, C., Chen, R., Meng, X., Wang, W., Ji, J., Kang, L., Liang, J., Li, X., Liu, Y., Yu, X., Zhu, J., Wang, Y., & Kan, H. (2022). Fine particulate matter air pollution and under-5 children mortality in China: A national time-stratified case-crossover study. *Environment International*, 159, 107022. <https://doi.org/10.1016/j.envint.2021.107022>
- Hug, L., Alexander, M., You, D., & Alkema, L. (2019). National, regional, and global levels and trends in neonatal mortality between 1990 and 2017, with scenario-based projections to 2030: A systematic analysis. *Lancet Global Health*, 7(6), e710-e720. [https://doi.org/10.1016/s2214-109x\(19\)30163-9](https://doi.org/10.1016/s2214-109x(19)30163-9)
- Karimi, B., & Shokrinezhad, B. (2020). Air pollution and mortality among infant and children under five years: A systematic review and meta-analysis. *Atmospheric Pollution Research*, 11(6), 61-70. <https://doi.org/10.1016/j.apr.2020.02.006>
- Kundu, S., & Stone, E. A. (2014). Composition and sources of fine particulate matter across urban and rural sites in the Midwestern United States. *Environmental Science: Processes and Impacts*, 16(6), 1360-1370. <https://doi.org/10.1039/c3em00719g>
- Li, X., Huang, S., Jiao, A., Yang, X., Yun, J., Wang, Y., Xue, X., Chu, Y., Liu, F., Liu, Y., Ren, M., Chen, X., Li, N., Lu, Y., Mao, Z., Tian, L., & Xiang, H. (2017). Association between ambient fine particulate matter and preterm



- birth or term low birth weight: An updated systematic review and meta-analysis. *Environmental Pollution*, 227, 596-605. <https://doi.org/10.1016/j.envp.2017.03.055>
- Macchi, C., Iodice, S., Persico, N., Ferrari, L., Cantone, L., Greco, M. F., Ischia, B., Dozio, E., Corsini, A., Sirtori, C. R., Ruscica, M., & Bollati, V. (2021). Maternal exposure to air pollutants, PCSK9 levels, fetal growth and gestational age - An Italian cohort. *Environment International*, 149, 106163. <https://doi.org/10.1016/j.envint.2020.106163>
- Proietti, E., Rööslö, M., Frey, U., & Latzin, P. (2013). Air pollution during pregnancy and neonatal outcome: a review. *Journal of Aerosol Medicine and Pulmonary Drug Delivery*, 26(1), 9-23. <https://doi.org/10.1089/jamp.2011.0932>
- Smith, R. B., Fecht, D., Gulliver, J., Beevers, S. D., Dajnak, D., Blangiardo, M., Ghosh, R. E., Hansell, A. L., Kelly, F. J., Anderson, H. R., & Toledano, M. B. (2017). Impact of London's road traffic air and noise pollution on birth weight: Retrospective population based cohort study. *BMJ*, 359, j5299. <https://doi.org/10.1136/bmj.j5299>
- Soleman, S. R. (2020). The trend of children mortality rates in Indonesia. *Jurnal Ilmu Kesehatan Masyarakat*, 11(1), 52-62. <https://doi.org/10.26553/jikm.2020.11.1.52-62>
- Soon, B. T. (2012). *The global action report on preterm birth*. Geneva: World Health Organization
- Southerland, V. A., Brauer, M., Mohegh, A., Hammer, M. S., van Donkelaar, A., Martin, R. V., Apte, J. S., & Anenberg, S. C. (2022). Global urban temporal trends in fine particulate matter (PM<sub>2.5</sub>) and attributable health burdens: estimates from global datasets. *Lancet Planet Health*, 6(2), e139-e146. [https://doi.org/10.1016/s2542-5196\(21\)00350-8](https://doi.org/10.1016/s2542-5196(21)00350-8)
- Sun, X., Luo, X., Zhao, C., Chung Ng, R. W., Lim, C. E., Zhang, B., & Liu, T. (2015). The association between fine particulate matter exposure during pregnancy and preterm birth: A meta-analysis. *BMC Pregnancy Childbirth*, 15, 300. <https://doi.org/10.1186/s12884-015-0738-2>
- Wang, J., Cao, H., Sun, D., Qi, Z., Guo, C., Peng, W., Sun, Y., Xie, Y., Liu, X., Li, B., Luo, Y., Pan, Y., Li, Y., & Zhang, L. (2019). Associations between ambient air pollution and mortality from all causes, pneumonia, and congenital heart diseases among children aged under 5 years in Beijing, China: A population-based time series study. *Environmental Research*, 176, 108531. <https://doi.org/10.1016/j.envres.2019.108531>
- World Health Organization. (2021a). Ambient (outdoor) air pollution. [https://www.who.int/news-room/fact-sheets/detail/ambient-\(outdoor\)-air-quality-and-health](https://www.who.int/news-room/fact-sheets/detail/ambient-(outdoor)-air-quality-and-health).
- World Health Organization. (2021b). *WHO global air quality guidelines: Particulate matter (PM<sub>2.5</sub> and PM<sub>10</sub>), ozone, nitrogen dioxide, sulfur dioxide and carbon monoxide*. Geneva: World Health Organization.
- Yorifuji, T., Kashima, S., & Doi, H. (2016). Acute exposure to fine and coarse particulate matter and infant mortality in Tokyo, Japan (2002-2013). *Science of the Total Environment*, 551-552, 66-72. <https://doi.org/10.1016/j.scitotenv.2016.01.211>
- Yuan, J., Shi, L., Li, H., Zhou, J., Zeng, L., Cheng, Y., & Han, B. (2022). The burden of neonatal diseases attributable to Ambient PM<sub>2.5</sub> in China from 1990 to 2019. *Frontiers in Environmental Science*, 10, 50. <https://doi.org/10.3389/fenvs.2022.828408>
- Zhang, L., Liu, W., Hou, K., Lin, J., Song, C., Zhou, C., Huang, B., Tong, X., Wang, J., Rhine, W., Jiao, Y., Wang, Z., Ni, R., Liu, M., Zhang, L., Wang, Z., Wang, Y., Li, X., Liu, S., & Wang, Y. (2019). Air pollution exposure associates with increased risk of neonatal jaundice. *Nature Communications*, 10(1), 3741. <https://doi.org/10.1038/s41467-019-11387-3>

**Cite this article as:** Soleman, S. R., Rifai, M., & Indah, M. F. (2023). Correlation between fine particulate matter air pollution on under-five children mortality in Indonesia: A secondary data analysis of WHO Global Health Observatory. *Public Health of Indonesia*, 9(1), 13-20. <https://doi.org/10.36685/phi.v9i1.662>

# Cek 5\_Correlation between fine particulate matter air pollution and under-five children mortality in Indonesia: A secondary data analysis of WHO Global Health Observatory

## ORIGINALITY REPORT

10%

SIMILARITY INDEX

7%

INTERNET SOURCES

7%

PUBLICATIONS

3%

STUDENT PAPERS

## PRIMARY SOURCES

1	<a href="http://www.ijsurgery.com">www.ijsurgery.com</a> Internet Source	1%
2	<a href="http://ejournal2.undip.ac.id">ejournal2.undip.ac.id</a> Internet Source	1%
3	Submitted to Universitas Islam Indonesia Student Paper	1%
4	<a href="http://etd.aau.edu.et">etd.aau.edu.et</a> Internet Source	1%
5	Veronica A Southerland, Michael Brauer, Arash Mohegh, Melanie S Hammer et al. "Global urban temporal trends in fine particulate matter (PM2.5) and attributable health burdens: estimates from global datasets", The Lancet Planetary Health, 2022 Publication	1%
6	Lili Zhang, John P. Wilson, Na Zhao, Wenhao Zhang, Yu Wu. "The dynamics of cardiovascular and respiratory deaths	<1%

attributed to long-term PM2.5 exposures in global megacities", Science of The Total Environment, 2022

Publication

---

7	<a href="https://egusphere.copernicus.org">egusphere.copernicus.org</a> Internet Source	<1 %
8	<a href="https://www.coursehero.com">www.coursehero.com</a> Internet Source	<1 %
9	<a href="https://helda.helsinki.fi">helda.helsinki.fi</a> Internet Source	<1 %
10	<a href="https://www.emerald.com">www.emerald.com</a> Internet Source	<1 %
11	<a href="https://sands.edpsciences.org">sands.edpsciences.org</a> Internet Source	<1 %
12	Submitted to Universitas Muhammadiyah Yogyakarta Student Paper	<1 %
13	<a href="https://amt.copernicus.org">amt.copernicus.org</a> Internet Source	<1 %
14	<a href="https://bmcpregnancychildbirth.biomedcentral.com">bmcpregnancychildbirth.biomedcentral.com</a> Internet Source	<1 %
15	Bruno Martins Gurgatz, Luiza Natalino, Julia Stefany Chagas Albrecht, Camila Arielle Bufato Moreira et al. "Assessing PM 2.5 in a Protected Ecosystem in the South Atlantic under Massive Port Activities - Evidence of	<1 %

# High Concentrations and Multiple Sources", Research Square Platform LLC, 2023

Publication

---

16

R Atkinson. "Worldwide Spatial Variation in Daily Mortality Relative Rates Due to Short-Term Exposure to Air Pollution: A Meta-Analysis", *Epidemiology*, 11/2006

Publication

---

<1 %

17

Si-Tian Zang, Qi-Jun Wu, Xin-Yu Li, Chang Gao, Ya-Shu Liu, Yu-Ting Jiang, Jia-Yu Zhang, Hui Sun, Qing Chang, Yu-Hong Zhao. "Long-term PM2.5 exposure and various health outcomes: An umbrella review of systematic reviews and meta-analyses of observational studies", *Science of The Total Environment*, 2021

Publication

---

<1 %

18

Yuxin Huang, Shengpeng Wu, Huihuan Luo, Ying Yang et al. "Association of Fine Particulate Matter and Its Components with Macrosomia: A Nationwide Birth Cohort Study of 336 Chinese Cities", *Environmental Science & Technology*, 2023

Publication

---

<1 %

19

dianqinsun.com

Internet Source

---

<1 %

20

espace.curtin.edu.au

Internet Source

---

<1 %

21	lib.pusan.ac.kr Internet Source	<1 %
22	onlinelibrary.wiley.com Internet Source	<1 %
23	ora.ox.ac.uk Internet Source	<1 %
24	ouci.dntb.gov.ua Internet Source	<1 %
25	www.medrxiv.org Internet Source	<1 %
26	"Air Pollution and Health Effects", Springer Science and Business Media LLC, 2015 Publication	<1 %
27	Mohanned Abduljabbar Hael. "Modeling spatial-temporal variability of PM2.5 concentrations in Belt and Road Initiative (BRI) region via functional adaptive density approach", Environmental Science and Pollution Research, 2023 Publication	<1 %
28	Thomas J. Luben, Adrien A. Wilkie, Alison K. Krajewski, Fanny Njie, Kevin Park, Sarah Zelasky, Kristen M. Rappazzo. "Short-term exposure to air pollution and infant mortality: A systematic review and meta-analysis", Science of The Total Environment, 2023 Publication	<1 %

---

Exclude quotes      On

Exclude matches      Off

Exclude bibliography      On