

SISTEM PEMANTAUAN PENGGUNAAN BATERAI MOBIL LISTRIK BERBASIS INTERNET of THINGS (IoT) & RADIO TELEMETRI

Ahmad Firdaus Hasibuan¹, Alfian Ma'arif^{2,*}

^{1,2}Department of Electrical Engineering, Universitas Ahmad Dahlan, Yogyakarta, Indonesia

Email: ¹ahmad20000022039@webmail.uad.ac.id, ²alfian.maarif@te.uad.ac.id

*Corresponding Author



Abstract— Making electric cars at Ahmad Dahlan University has started since 2019. The implementers in making this electric car are students from the Faculty of Teacher Training and Education, Automotive Technology Vocational Education Study Program and Faculty of Industrial Technology, Electrical Engineering Study Program which started by taking part in a Comparative Study at a Contest Indonesian Electric Car 2019. 2019 at Bandung State Polytechnic. The IoT and Radio Telemetry Based Electric Car Energy Usage Monitoring System created by researchers uses voltage sensor components and current sensors to detect voltage and current in electric cars, NodeMCU ESP32 as a microcontroller, voltage sensors to detect voltage, current sensors to detect current in car electricity and LCD as a reading output from the sensor. Also using IoT ThingSpeak as a display of sent sensor readings requires an internet connection to the microcontroller and radio telemetry as a display of sensor data on a serial monitor without requiring an internet connection. As a result, the tool created can monitor voltage and current accurately from a distance as long as it is connected to the internet and not connected to the internet. The best parameters obtained are the voltage and current sensors because the difference in reading error values from the sensor to the device does not reach 2, therefore they are the best parameters for this monitoring system.

Keywords— *Internet of Things, Telemetry, Voltage Sensors, Current Sensors and ESP32 NodeMCU.*

I. INTRODUCTION

The first electric car was introduced by Robert Anderson from Scotland in 1832-1839 (Grebennikov, 2019) but at that time the price of fuel oil (BBM) was relatively cheap so people around the world tended to develop combustion engines that used fuel. Currently, fuel prices are increasingly expensive and reserves are very limited and difficult to control for the future.

Apart from that, there are environmental issues that are of global concern which are stated in Education for Sustainable Development (EfSD). This has triggered the development of the use of electrical energy in transportation systems as a substitute for fossil fuels, because electrical energy is easily produced from various sources, including renewable energy sources. An electric car is a car that is driven by an electric motor, using electrical energy stored in a battery or other energy storage location. Electric cars were very popular in the late 19th and early 20th centuries, but their popularity faded due to advances in internal combustion engine technology and the cheaper price of gasoline vehicles.

The energy crisis in the 1970-1980s gave rise to little interest in electric cars, but it was only in the 2000s that new vehicle manufacturers paid serious attention to electric vehicles. This was caused by the soaring price of petroleum in the 2000s and many people in the 2000s. The world is already aware of the negative impact of greenhouse gas emissions. Electric cars are one of the means of transportation of the future because of their high efficiency and low pollution. High efficiency due to the absence of friction on the brush. Electric cars have several potential advantages compared to cars with internal combustion engines, the most important of which is that electric cars do not produce motor vehicle emissions, apart from that, this type of car also reduces greenhouse gas emissions because it does not require fossil fuels as fossil fuels. the main driver.

Currently, oil-fueled vehicles (cars) seem to have become a basic need for the wider community. The role of the car itself is very meaningful for all groups, from livelihoods to just material wealth. However, without realizing it, the increasing demand for car production is actually increasingly endangering human survival. The essence of this threat is the increasingly polluted air pollution on planet Earth. Therefore, a lot of research has been carried out on electric cars for modern development in developed countries. Making electric cars at Ahmad Dahlan University has started since 2019. The implementers in making this electric car are students from the Faculty of Teacher Training and Education, Automotive Technology Vocational Education Study Program and Faculty of Industrial Technology, Electrical Engineering Study Program which started by taking part in a Comparative Study at a Contest Indonesian Electric Car 2019. 2019 at Bandung State Polytechnic. The support and role of the Academic Community of the Teacher Training and Education Faculty and the Faculty of Industrial Technology in making electric cars has increased the enthusiasm of students to produce an electric car called ADEV 01 Monalisa under the name Al-Qorni Team.

The electric cars that have been made are also being competed at national events such as FESC IIMS 2022 in Jakarta and Joint Electric Car Training between Universities by the Ministry of Public Works and Public Housing (PUPR) in the context of Road Day 2022 in Bandung and also the 2023 Indonesian Electric Car Contest in Bandung State Polytechnic to date. In the efforts to develop the Ahmad Dahlan University electric car team, they are still experiencing problems in the monitoring process of measuring the current and voltage emitted by the electric car. In monitoring systems, current and voltage measurements are usually still done manually and must be in direct contact with the object. This results in the process of controlling an electric car being long and less efficient. With a data monitoring and control system, the results of current and voltage measurements can be carried out in real time using a computer as a medium for monitoring readings of current, voltage and electrical energy.

II. METHOD

A. Software Design

The flowchart starts from the voltage sensor which reads the voltage from the battery, then the current sensor which reads the current load from the bldc motor. After the sensor is read, the sensor will send data to the NodeMCU ESP32, then the NodeMCU ESP32 will send data to the output, namely IoT ThingSpeak which will display voltage and current data by requiring an internet connection also the NodeMCU ESP32 sends data to telemetry which will display the data to the serial monitor and I2C LCD. The flow diagram

and tool block diagram can be seen in Figure 1 and Figure 2.

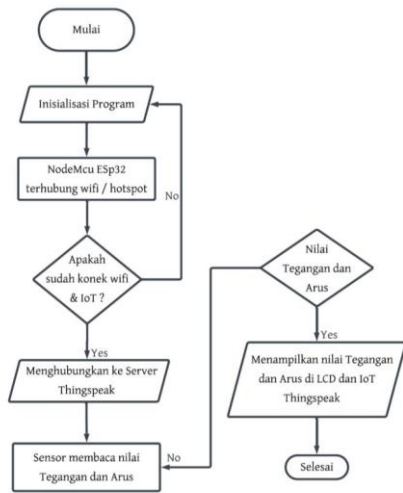


Fig. 1. Flowchart

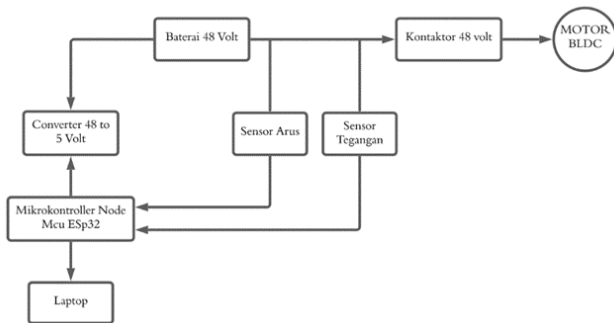


Fig. 2. Block Diagrams

B. Wiring Diagram

Wiring diagrams are made to understand the wiring paths in the system being created in order to minimize errors in connecting one component to another. Specifications and wiring diagram images can be seen in Table 1 and Figure 3.

Tabel 1. Wiring diagram specifications

No	NodeMCU ESP32	Sensor Tegangan	Sensor Arus	Telemetry 433 MHz	LCD I2C
1	18	Out	Out	-	-
2	RX	-	-	RX	-
3	TX	-	-	TX	-
4	21	-	-	-	SDA
5	22	-	-	-	SCL
6	5V	-	Positif	Positif	Positif
7	GND	Negatif	Negatif	Negatif	Positif

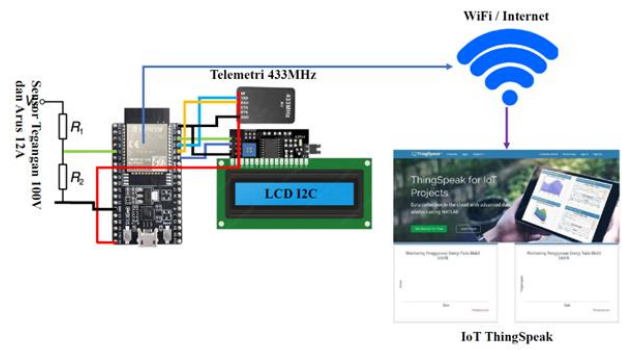


Fig. 3. Wiring diagram

III. RESULT AND DISCUSSION

A. Voltage Sensor and Multimeter Testing

Voltage testing is carried out to observe the voltage on a car battery with a capacity of 46.60V. The part observed is the voltage of the car when it is on and running (10 seconds). The voltage sensor testing process is carried out by placing the voltage sensor on the battery and then connecting the sensor to the laptop to observe the voltage via the I2C LCD. In testing the voltage sensor, a voltage sensor is used which is made using a 100V capacity resistor connected in series. The test results are presented in Table 2 and also Figure 4.

Tabel 2. Voltage Sensor and Multimeter Testing

No	Voltage on the Sensor (V)	Voltage on the Multimeter (V)	Difference (V)
1	47.36	47.64	0.28
2	47.36	47.65	0.29
3	47.24	47.65	0.41
4	47.56	47.64	0.08
5	46.71	47.64	0.93
6	47.36	47.64	0.28
7	47.40	47.64	0.24
8	47.44	47.65	0.21
9	47.36	47.35	0.01
10	47.36	47.54	0.18
Average	47.315	47.604	0.289

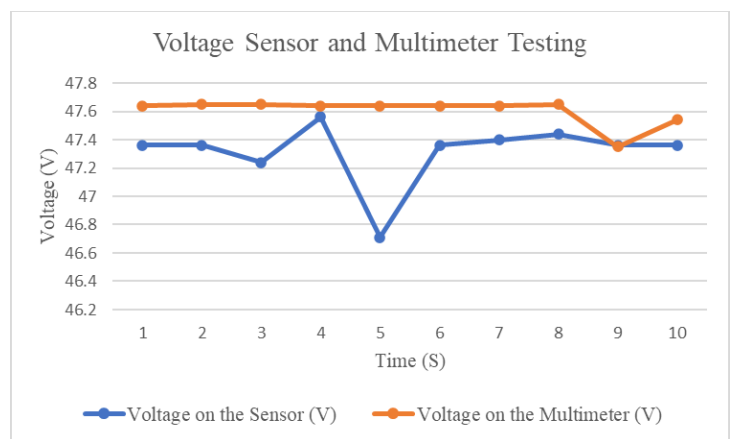


Fig. 4. Voltage Sensor and Multimeter Testing Graph

B. Voltage testing Using IoT ThingSpeak

The ThingSpeak voltage test was carried out to observe the voltage on a car battery with a capacity of 46.60V. The part that is observed is the voltage of the car when it is turned on. The ThingSpeak testing process, where the voltage sensor is carried out by placing the voltage sensor on the battery, then connecting the sensor to the laptop, requires an internet connection. It also has a delay value of 15 seconds for each reception of data sent from the NodeMCU ESP32. In the ThingSpeak test, a voltage sensor is used which is made using a 100V resistor connected in series. The test results are presented in the form of Table 3 and also Figure 5.

Tabel 3. Voltage testing Using IoT ThingSpeak

No	Voltage on the Sensor (V)	Voltage delay on the ThingSpeak (S)
1	47.28	12.39
2	47.40	10.41
3	47.32	6.83
4	47.24	5.21
5	47.83	4.5
6	47.32	13.39
7	47.24	9.5
8	47.32	9.19
9	48.09	10.61
10	47.24	5.8
Average	47.428	8.783

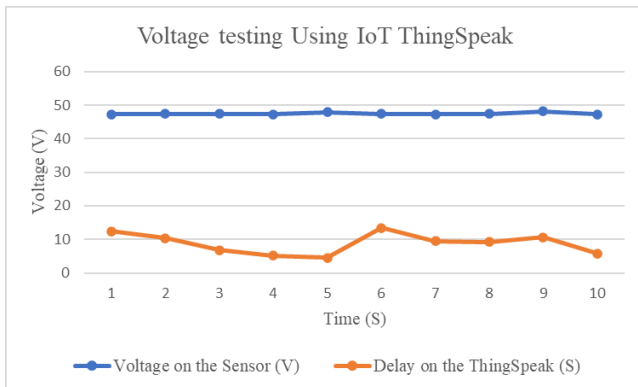


Fig. 5. Voltage testing Using IoT ThingSpeak Graph

C. Voltage Testing Using Telemetry

Voltage testing using 433MHz Telemetry was carried out to observe the voltage on a car battery with a capacity of 46.48V. The part that is observed is the voltage of the car when it is turned on. The Telemetry testing process, where the voltage sensor is carried out by placing the voltage sensor on the battery, then the sensor is connected to the laptop without requiring an internet connection, also has a delay value of 1 second in real time for each reception. data sent from the ESP32 NodeMCU. In Telemetry testing, a voltage sensor is used which is made using a resistor with a capacity of 100V connected in series. The test results are presented in Table 4 and also Table 6.

Tabel 4. Voltage Testing Using Telemetry

No	Voltage on the Sensor (V)	Voltage delay on the Telemetry (S)
1	46.48	1
2	46.60	1
3	46.23	1
4	46.64	1
5	46.56	1
6	46.60	1
7	46.56	1
8	47.58	1
9	46.64	1
10	46.56	1
Average	46.645	1

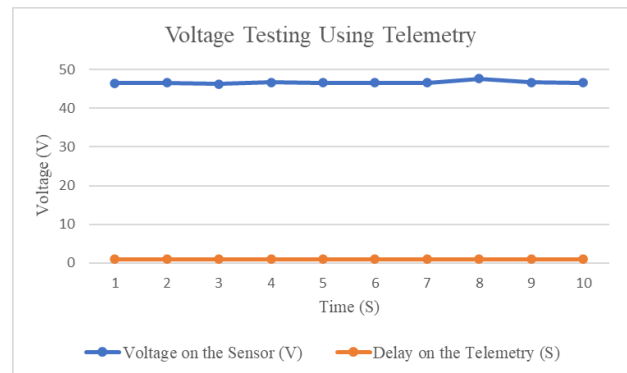


Fig. 6. Voltage Testing Using Telemetry Graph

D. Current Sensor and Multimeter Testing

Current testing is carried out to observe the current in a car battery with a capacity of 1.482A. The part observed is the voltage of the car when it is on and running (10 seconds). The current sensor testing process is carried out by placing the current sensor on the battery and then connecting the sensor to the laptop to observe the current via the I2C LCD. In testing the current sensor, a current sensor is used which is made using a resistor with a capacity of 12A which is connected in series by dividing the total voltage of 48V by the resistance of 615,000Ω on the resistor to obtain the total current that can be generated. read is 12A. The test results are presented in Table 5 and also Figure 7.

Tabel 5. Current Sensor and Multimeter Testing

No	Current on the Sensor (A)	Current on the Multimeter (A)	Difference (A)
1	1.482	1.416	0.066
2	1.482	1.417	0.065
3	1.482	1.441	0.041
4	1.482	1.416	0.066
5	1.482	1.411	0.071
6	1.482	1.418	0.064
7	1.482	1.417	0.065

8	1.482	1.413	0.069
9	1.482	1.413	0.069
10	1.482	1.413	0.069
Average	1.482	1.4175	0.064

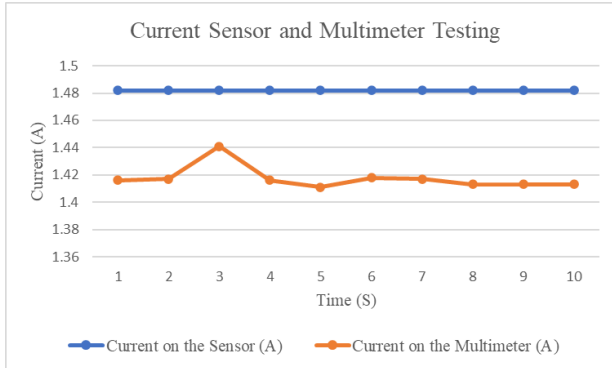


Fig. 7. Current Sensor and Multimeter Testing graph

E. Current Testing Using IoT ThingSpeak

The ThingSpeak current test was carried out to observe the current in a car battery with a capacity of 1.408A. The part that is observed is the flow of cars while running. In testing the current sensor, a current sensor is used which is made using a resistor with a capacity of 12A which is connected in series by dividing the total voltage of 48V by the resistance of 615,000Ω on the resistor so that the total current that can be read is 12A. Then the current sensor is connected to the laptop and requires an internet connection. It also has a delay value of 15 seconds for each reception of data sent from the NodeMCU ESP32. The test results are presented in Table 6 and also in Figure 8.

Tabel 6. Current Testing Using IoT ThingSpeak

No	Current on the Sensor (A)	Delay on the ThingSpeak (S)
1	1.408	13.27
2	1.393	9.24
3	1.413	4.27
4	1.400	14.89
5	1.408	9.36
6	1.396	9.96
7	1.408	4.28
8	1.426	12.74
9	1.412	10.07
10	1.395	7.2
Average	1.4059	9.528

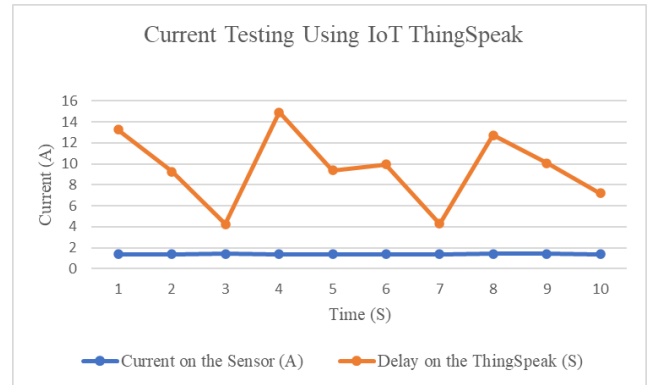


Fig. 8. Current Testing Using IoT ThingSpeak Graph

F. Current Testing Using Telemetry

Current testing using 433MHz Telemetry was carried out to observe the current in a car battery with a capacity of 1.482A. The part that is observed is the flow of cars while running. In testing the current sensor, a current sensor is used which is made using a resistor with a capacity of 12A which is connected in series by dividing the total voltage of 48V by the resistance of 615,000Ω on the resistor so that the total current that can be read is 12A. Then the current sensor is connected to the laptop without requiring an internet connection and also has a delay value of 1 second in real time every time it receives data sent from the NodeMCU ESP32. The test results are presented in Table 7 and also Figure 9.

Tabel 7. Current Testing Using Telemetry

No	Current on the Sensor (A)	Delay on the Telemetry (S)
1	1.416	1
2	1.413	1
3	1.415	1
4	1.417	1
5	1.413	1
6	1.427	1
7	1.413	1
8	1.412	1
9	1.413	1
10	1.413	1

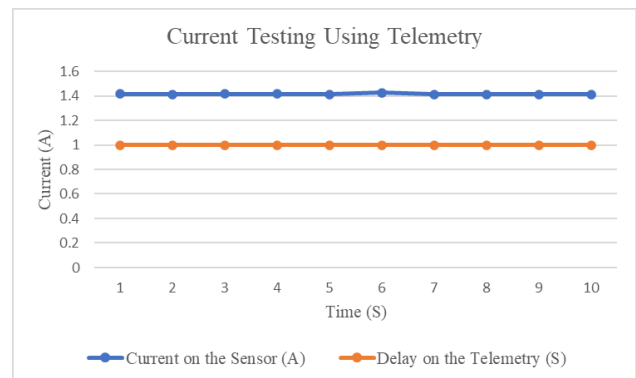


Fig. 9. Current Testing Using Telemetry Graph

G. Conclusion

Based on the research that has been carried out, several conclusions can be drawn, namely:

1. The car battery voltage reading system that has been created can function well. The data tested by the monitoring system is from 1 second to 10 seconds.
2. IoT ThingSpeak as a development tool. As a result, the tool created can monitor voltage and current with a

maximum delay of 15 seconds remotely as long as it is connected to the internet. Telemetry as a means of sending data from sensor readings can be displayed on a serial monitor and 12C LCD in real time without having to be connected to the internet.

REFERENCES

- [1] M. B. Pratama, Muhammad Ary Murtii, and Ekki Kurniawan, *Sistem Monitoring pada Uninterruptible Power Supply Berbasis Internet of Things*, vol. 1. 2019. [Online]. Available: <https://seminar-id.com/semnas-sainteks2019.html>
- [2] I. Haryo Suprobo, A. Yuandari, A. Hartono, H. K. Suryo, H. Valentina PDM, and Y. S. Aldo, "SISTEM TELEMETRI MOBIL LISTRIK ARUGO," *IMDeC | Industrial and Mechanical Design Conference. Politeknik ATMI Surakarta*, pp. 177–177, 2021.
- [3] Maulana, Mochammad Syeh, and Indah Sulistiyowati, "Sistem Telemetri Mobil Listrik IMEI TEAM UMSIDA Berbasis Iot Dan Ublox Gps Neo-6m Surat Keterangan Tidak Plagiat [Kepangkatan]," 2020. [Online]. Available: <http://sinta.ristekbrin.go.id/authors/detail?id=5996233&view=overview>
- [4] E. Prasetyo, D. Dahlan, D. Raditya, and N. Fadhli, "Analisis Pengujian Sepeda Motor Listrik 3 kW Pada Jalan Mendatar dan Menanjak," *In Prosiding Seminar Rekayasa Teknologi (SemResTek)*, pp. 47–53, 2018.
- [5] D. Dahlan, D. L. Zariatian, and N. Wibowo, "Perancangan Sistem Pemantauan Kecepatan dan Pengelolaan Baterai pada Sepeda Motor Listrik 3 kW," *In Prosiding Seminar Rekayasa Teknologi (SemResTek)*, pp. 366–372, 2018.
- [6] D. Fernando, "Monitoring Penggunaan Daya Listrik Satu Fasa," *MSI Transaction on Education*, vol. 1, no. 4, pp. 175–182, Dec. 2020, doi: 10.46574/mted.v1i4.41.
- [7] J. Pramana, D. H. R. Saputra, and S. Syahririni, "Design of Speed Limiter Display For Uwin Fly Electric Bike Based on Internet of Things," *Procedia of Engineering and Life Science*, vol. 4, Jul. 2023, doi: 10.21070/pels.v4i0.1415.
- [8] E. Fajar. Kurniawan, "PREDIKSI JARAK TEMPUH MOBIL LISTRIK MENGGUNAKAN SENSOR TEGANGAN KERJA PRAKTIK," 2022.
- [9] W. CAHYADI, MUH. F. SA'ID, and A. R. CHAIDIR, "Optimasi Racing Line pada ECU (Electronic Control Unit) Mobil Listrik Berbasis Fuzzy Logic Control," *ELKOMIKA: Jurnal Teknik Energi Elektrik, Teknik Telekomunikasi, & Teknik Elektronika*, vol. 8, no. 2, p. 454, May 2020, doi: 10.26760/elkomika.v8i2.454.
- [10] A. Ilham Pradana *et al.*, "Manajemen dan Pemantauan Energi Motor BLDC pada Mobil Listrik Berbasis IoT," 2018.
- [11] M. R. Hammady, "SISTEM TELEMETRI PADA MOBIL LISTRIK INACOS BERBASIS IOT UNIVERSITAS TELKOM," 2018.
- [12] U. Nursusanto, K. Khairunnisa', and H. Hartoyo, "Real Time Battery Monitoring Control in Mini Generating System," *Jurnal Edukasi Elektro*, vol. 6, no. 2, pp. 96–104, Nov. 2022, doi: 10.21831/jee.v6i2.54299.
- [13] T. Hidayat, L. Fitrianingrum, K. Hudiwasono, B. Perencanaan, D. Pengembangan, and K. Bandung, "Penerapan Prinsip Efektif dan Efisien dalam Pelaksanaan Monitoring Kegiatan Penelitian," 2021.
- [14] P. Hoddie and L. Prader, *IoT Development for ESP32 and ESP8266 with JavaScript: A Practical Guide to XS and the Moddable SDK*, 1st ed. Apress, 2020. doi: 10.1007/978-1-4842-5070-9.
- [15] A. Grebennikov, "Radio Frequency and Microwave Power Amplifiers, Volume 2: Efficiency and Linearity Enhancement Techniques," 2019.
- [16] D. Harjono and W. Widodo, "Analisis Sistem Penggerak Motor BLDC Pada Mobil Listrik Ponecar," *Jurnal ELIT*, vol. 2, no. 1, pp. 11–22, Apr. 2021, doi: 10.31573/elit.v2i1.212.
- [17] B. J. Setiawan, "Design and Build Voltage and Current Monitoring Parameters Device of Rechargeable Batteries in Real-Time Using the INA219 GY-219 Sensor," *Journal of Energy, Material, and Instrumentation Technology*, vol. 4, no. 2, pp. 58–71, May 2023, doi: 10.23960/jemite.v4i2.137.
- [18] P. Bansal and N. PR, "Wireless Battery Management System for Electric Vehicles," in *2019 IEEE Transportation Electrification Conference (ITEC-India)*, Bengaluru, India: IEEE, Dec. 2019, pp. 1–5. doi: 10.1109/ITEC-India48457.2019.ITECINDIA2019-83.
- [19] P. Aruna and P. V. Vasana, "Review on Energy Management System of Electric Vehicles," in *2019 2nd International Conference on Power and Embedded Drive Control (ICPEDC)*, Chennai, India: IEEE, Aug. 2019, pp. 371–374. doi: 10.1109/ICPEDC47771.2019.9036689.
- [20] I. M. Wirawan and F. Matofani, "Monitoring Penggunaan Energi Listrik pada Bengkel Mobil Secara Nirkabel Berbasis Arduino," *Jurnal Inovasi Teknologi dan Edukasi Teknik*, vol. 2, no. 4, pp. 179–188, Apr. 2022, doi: 10.17977/um068v2i42022p179-188.