

# LABORATORY ROOM GUIDANCE AND COUNSELING

UNIVERSITAS AHMAD DAHLAN

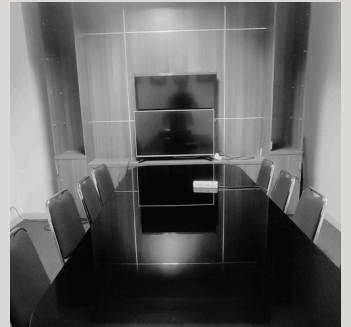
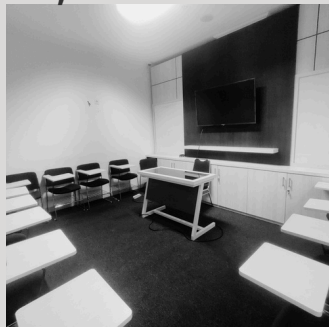
Disusun oleh :

**Dedy Setiawan**

**Corry Ardana**

**Dr. Agus Supriyanto, M.Pd.**

**M. Nasir Hafizh, M.Kom**





# LIST OF CONTENTS

|           |  |           |
|-----------|--|-----------|
| <b>01</b> | <b>Case Conference Room.....</b>           | <b>03</b> |
| <b>02</b> | <b>Classical Guidance Room.....</b>        | <b>04</b> |
| <b>03</b> | <b>Group Counseling Room 1.....</b>        | <b>05</b> |
| <b>04</b> | <b>Observation Room.....</b>               | <b>06</b> |
| <b>05</b> | <b>Individual Counseling Room.....</b>     | <b>07</b> |
| <b>06</b> | <b>Audiovisual Room.....</b>               | <b>08</b> |
| <b>07</b> | <b>Relaxation Room.....</b>                | <b>09</b> |
| <b>08</b> | <b>Podcast Room.....</b>                   | <b>10</b> |
| <b>09</b> | <b>Group Guidance Room 1.....</b>          | <b>11</b> |
| <b>10</b> | <b>Testing Room.....</b>                   | <b>12</b> |
| <b>11</b> | <b>Group Counseling Room 2.....</b>        | <b>13</b> |
| <b>12</b> | <b>Journal and Thesis Access Room.....</b> | <b>14</b> |
| <b>13</b> | <b>Group Guidance Room 2.....</b>          | <b>15</b> |
| <b>14</b> | <b>Library Therapy Room.....</b>           | <b>16</b> |
| <b>15</b> | <b>CCTV Operator Room.....</b>             | <b>17</b> |

# INSTRUCTIONS FOR USE

The guidebook uses Augmented Reality (AR) technology. Let's explore a new world by following these instructions:

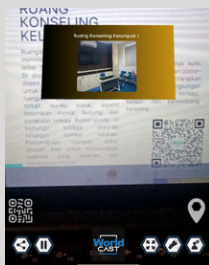
**1.** Scan the barcode with the World Cast logo using the scanner on your smartphone (make sure the scanner is focused on the barcode)



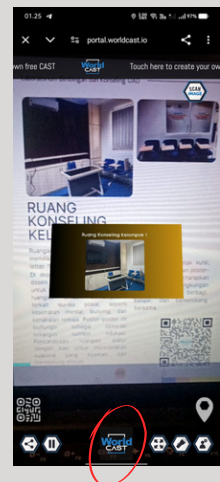
**2.** The barcode will open and direct to the web and display like the image on the side.



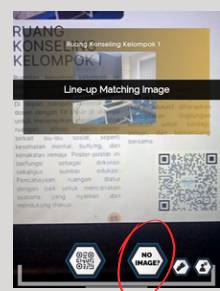
**3.** Point the camera at the image on each page of the module.



**4.** It will display an image along with audio. (The image cannot be moved with a finger)



**5.** If you want the image to be moved with a finger, select "no image" as in the picture on the side. (The image cannot be moved with a finger)





# CASE CONFERENCE ROOM

The case conference room is designed with a long circular table in the centre, surrounded by comfortable chairs for each participant. This table facilitates dynamic group interaction and discussion. On the room's front wall, there is a large TV ready to display presentation materials, videos, or data related to the case study being analyzed. The room is well-lit yet comfortable for the eyes, ensuring an atmosphere conducive to focus and concentration. With these facilities, the room provides an ideal environment for collaborative work, critical thinking, and interactive learning.







## CLASSICAL GUIDANCE ROOM

This classical guidance room is designed to resemble classroom conditions in schools, complete with posters of guidance and counselling figures with the theories they encounter. Tables and chairs are neatly arranged to provide comfort for learning. TV is provided to display learning materials, making the learning process more interactive and exciting.

These facilities make the classical guidance room ideal for developing learning skills, practising, and receiving practical guidance.





## COUNSELING ROOM GROUP I

This group counselling room has a "U" shaped chair layout facing the lecturer's desk. In front of the room is a lecturer's desk with a large TV above it to display the material. The room's walls are decorated with posters related to social issues, such as mental health, bullying, and juvenile delinquency. These posters function as decoration as well as educational resources. The lighting in the room is well arranged to create a comfortable atmosphere and support discussion.



The combination of the layout of the chairs, lecturer's desk, TV, and educational posters is expected to create a conducive environment for sharing, learning, and growing together.







## OBSERVATION ROOM

This observation room is designed to observe the counselling process with a one-way glass screen facility so that observers can monitor the process. This screen allows observers to see the progress of the counselling session without being known by the individual being counselled.

The observation room is equipped with comfortable chairs, a high-quality audio system to hear the conversation and lighting that is adjusted so as not to disturb.





## INDIVIDUAL COUNSELING ROOM

Individual counselling room is designed for private sessions between counsellors and clients. This room has comfortable sofa chairs to create a relaxed and safe atmosphere for clients. In addition, there are also relaxation chairs that support the use of counselling techniques to help clients feel more comfortable.

The existing facilities are designed to increase the comfort and effectiveness of counselling sessions so clients can benefit immensely from the ongoing counselling process.







## AUDIOVISUAL ROOM

This audiovisual room is designed to support learning activities and prioritizes using audiovisual media. Each wall is covered with sound-absorbing material to minimize sound reflection and create an efficient environment. The room has an LCD screen on one wall and an audio system to ensure transparent sound quality.

The neatly arranged chair positions allow each participant to comfortably observe and listen to the presentation or audiovisual material being played, making it an ideal place for interaction.





## RELAXATION ROOM

This room is designed as an oasis of relaxation and collaboration for lecturers of the BK Study Program. Facilitated with comfortable relaxation massage chairs, this room also has a long table for in-depth discussions. The calm decor and soft lighting create an ideal atmosphere to regenerate the mind and body after a teaching session in the BK laboratory. With a dual function as a transit room, lecturers can easily relax or prepare the following lecture material comfortably and efficiently here.







## PODCAST ROOM

This podcast room is specially designed with sophisticated equipment such as special microphones, voice recording devices, and headphones. It is also equipped with a sound system to optimize the process of running activities. The interior is comfortable and soundproof, with adjustable lighting. The main goal is to facilitate productivity in creating educational content.





## GROUP GUIDANCE ROOM I

This room is designed for comfort and effective interaction during group guidance activities. At the front, there is a large LCD that functions to display teaching materials. The chairs are arranged in a "U" formation facing the teacher's desk, creating a conducive atmosphere for discussion and group guidance. This layout gives all participants a good view of the teacher and the LCD screen. It is hoped that the design of this room can support optimal collaboration and communication between participants and teachers. The warm and professional atmosphere helps facilitate a practical and interactive learning process.







# TESTING ROOM

The testing room is a unique facility that stores and operates instrument test tools for conducting assessments in Guidance and Counseling (BK) services at UAD. This room is designed to maintain the confidentiality of the test tools used so that related parties can only access the results and assessment methods within the scope of UAD Guidance and Counseling.



Equipment and media used in BK services, including psychological test devices and assessment aids, are strictly guarded to prevent the dissemination of information outside the UAD BK environment.





## GROUP II COUNSELING ROOM

This observation room is designed to observe the counselling process with a one-way glass screen facility. This screen allows observers to see the counselling session without being known by the individual being counselled. The observation room is equipped with comfortable chairs, a high-quality audio system to hear the conversation and lighting that is adjusted so as not to disturb.







## JOURNAL AND THESIS ACCESS ROOM

This room is filled with theses written by alums of Guidance and Counseling (BK) students, neatly arranged on glass shelves that can be used as references for BK students who are writing or preparing their theses. Around the walls, informative posters about popular approaches in BK services decorate the room.

Each poster briefly explains the approach's theory and practical application, helping students understand and apply it in their studies and practices.





## GROUP GUIDANCE ROOM II

This room is designed for comfort and effective interaction during group guidance activities. At the front, there is a large LCD to display group guidance activity materials; in addition, student chairs are on the edge of the lecturer's teaching desk on the right and left so that students can focus on the lecturer and the materials provided so that group guidance learning activities can be carried out conductively.







## THERAPY LIBRARY ROOM

This room is ideal for guidance and counselling students to explore new knowledge. Surrounding it are shelves filled with various reference books, from classic theories to the latest research. Tables and chairs are neatly arranged, facilitating discussion and collaboration between students.

The calm yet energetic atmosphere of the room invites you to dig deeper into psychology and counselling. Natural light through the windows adds a warm touch to the intense learning atmosphere in this academic space.





## CCTV OPERATOR ROOM

The CCTV control room in the BK Laboratory is specially designed to monitor activities in the corners of the classroom in real time. Equipped with monitors displaying each camera's view, this room allows security officers to monitor every activity.

The ergonomic layout of the room with good lighting ensures work comfort and work efficiency. All equipment in this room is regularly maintained to ensure optimal functionality.





Click the link above to explore further regarding access to the guidance and counseling laboratory room.







Click the link above to explore further regarding access to the guidance and counseling laboratory room.





# DRAFTING TEAM



**Dedy Setiawan**

Guidance and Counseling Student  
Universitas Ahmad Dahlan



**Corry Ardhana**

Guidance and Counseling Student  
Universitas Ahmad Dahlan



**Dr. Agus Supriyanto, M.Pd.**

Guidance and Counseling Lecturer  
Universitas Ahmad Dahlan



**M. Nasir Hafizh, M.Kom**

Computer Lab Laboratory Staff  
Teacher Professional Education  
Universitas Ahmad Dahlan

