



PROGRAM STUDI
**BIMBINGAN DAN
KONSELING**
FAKULTAS KEGURUAN DAN ILMU PENDIDIKAN
UNIVERSITAS AHMAD DAHLAN

E-MODULE OF Guidance and Counseling Service Themes

2024

**Hanun Qurata 'Aynayya Firdausi
Agestya Miftahiyatul Hasanah
Dr. Agus Supriyanto, M.Pd.
M. Nasir Hafizh, M.Kom**





PROGRAM STUDI

BIMBINGAN DAN KONSELING

FAKULTAS KEGURUAN DAN ILMU PENDIDIKAN
UNIVERSITAS AHMAD DAHLAN



USER GUIDE

- Use the camera on your device that can read QR codes
- If you don't have that feature, then download the QR code reader application from the Playstore
- Move the QR code contained in the e-module
- The Augmented Reality object is ready to be displayed on your device
- Happy Learning!!

Scan Here



Table of Contents

- 1** GUIDANCE AND COUNSELLING SERVICES DEFINITION
- 2** GUIDANCE AND COUNSELLING SERVICES OBJECTIVES
- 3** GUIDANCE AND COUNSELLING SERVICES FUNCTIONS
- 4** GUIDANCE AND COUNSELLING SERVICES ROLE
- 5** GUIDANCE AND COUNSELLING SERVICES

GUIDANCE AND COUNSELLING SERVICES DEFINITION

Guidance and counselling services can be interpreted as a set of assistance service programs carried out through individual and group activities to help students carry out daily life independently, develop optimally, and help students overcome problems they experience. Guidance programs in schools assist students in thinking about essential choices and adjustments that will be faced in the stage of life where a person can make sufficient preparations.



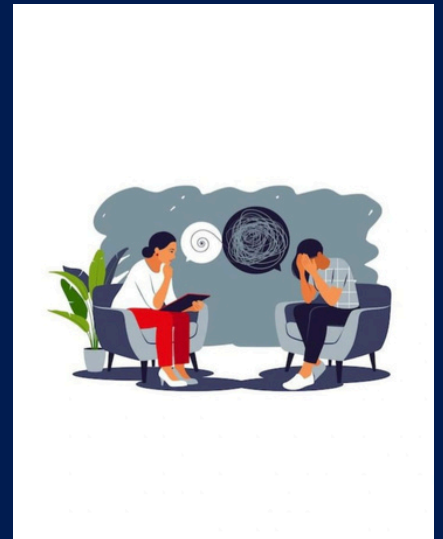
GUIDANCE AND COUNSELLING SERVICES OBJECTIVES

2

In general, the purpose of guidance and counselling is to help individuals develop themselves optimally according to their developmental stages and predispositions (such as basic abilities and talents), various backgrounds (such as family background, education, and socio-economic status), and accordance with the positive demands of their environment. At the same time, the specific purpose of guidance and counselling is an elaboration of the general purpose, which is directly linked to the problems experienced by the individual concerned, according to the complexity of the problem.

Specifically, the purpose of guidance and counselling in schools is so that students can:

- Develop their full potential as optimally as possible;
- Overcome difficulties in understanding themselves;
- Overcome difficulties in understanding their environment, including the school environment, family, work, socio-economic, and culture;
- Overcome difficulties in identifying and solving their problems;
- Overcome challenges in channeling their abilities, interests, and talents in the fields of education and work;
- Obtain appropriate assistance from parties outside the school to overcome the challenges that can't be solved at school.



GUIDANCE AND COUNSELLING SERVICES ROLE



3

Guidance and counselling are keys in an educational institution, namely the school institution, as a supporter of the progress or decline of the quality of education. The role of guidance and counselling in improving the quality of education is limited to academic guidance but also personal, social, and intellectual guidance and the provision of values. The role of guidance and counselling in improving the quality of education lies in how guidance and counselling build a whole person from various aspects within the students. Quality education isn't education that only transforms science and technology but must also improve professionalism and management systems, where all of this doesn't only concern academic aspects but also personal, social, intellectual maturity, and value systems. The role of BK in these four is what makes guidance and counselling play a role in improving the quality of education.

GUIDANCE AND COUNSELLING SERVICES FUNCTIONS

4



Guidance and counselling services, especially in schools, have several functions, namely:



- 01** Prevention Function. Guidance and counselling services prevent problems from arising in students so that they can avoid issues that can hinder their development.
- 02** Understanding Function, guidance and counselling services are carried out to provide an understanding of the client or student along with their problems and environment by the parties who help them (mentors).
- 03** Alleviation Function: if a student experiences a problem and cannot solve it himself, he goes to a supervisor or counsellor. The student in question hopes that the situation he is facing will be resolved.
- 04** Maintenance Function: According to Prayitno and Erman Amti, the maintenance function means maintaining everything good (positive) that exists in the individual (student),
- 05** Distribution Function: Every student should be allowed to develop themselves according to their circumstances, including talents, interests, skills, ideals, and so on.
- 06** Adjustment Function: Through this function, guidance and counselling services help create adjustment between students and their environment.
- 07** Development Function: Through this function, guidance and counselling services are provided to students to help them develop their overall potential in a more focused manner.
- 08** Corrective Function: Through this function, guidance and counselling services are provided to students to solve problems they face. The assistance provided depends on the difficulties faced by students.
- 09** Advocacy Function: Guidance and counselling services through this function are to help students obtain defence for their rights or interests that have received less attention.



Individual Counseling

Group counselling is a process of providing assistance through counselling interviews by an expert (counsellor) to several individuals connected in a small group with the same problems.



Universitas Ahmad Dahlan

VR

Guidance and Counseling Service Themes

Scan Here



**THANK
YOU!**